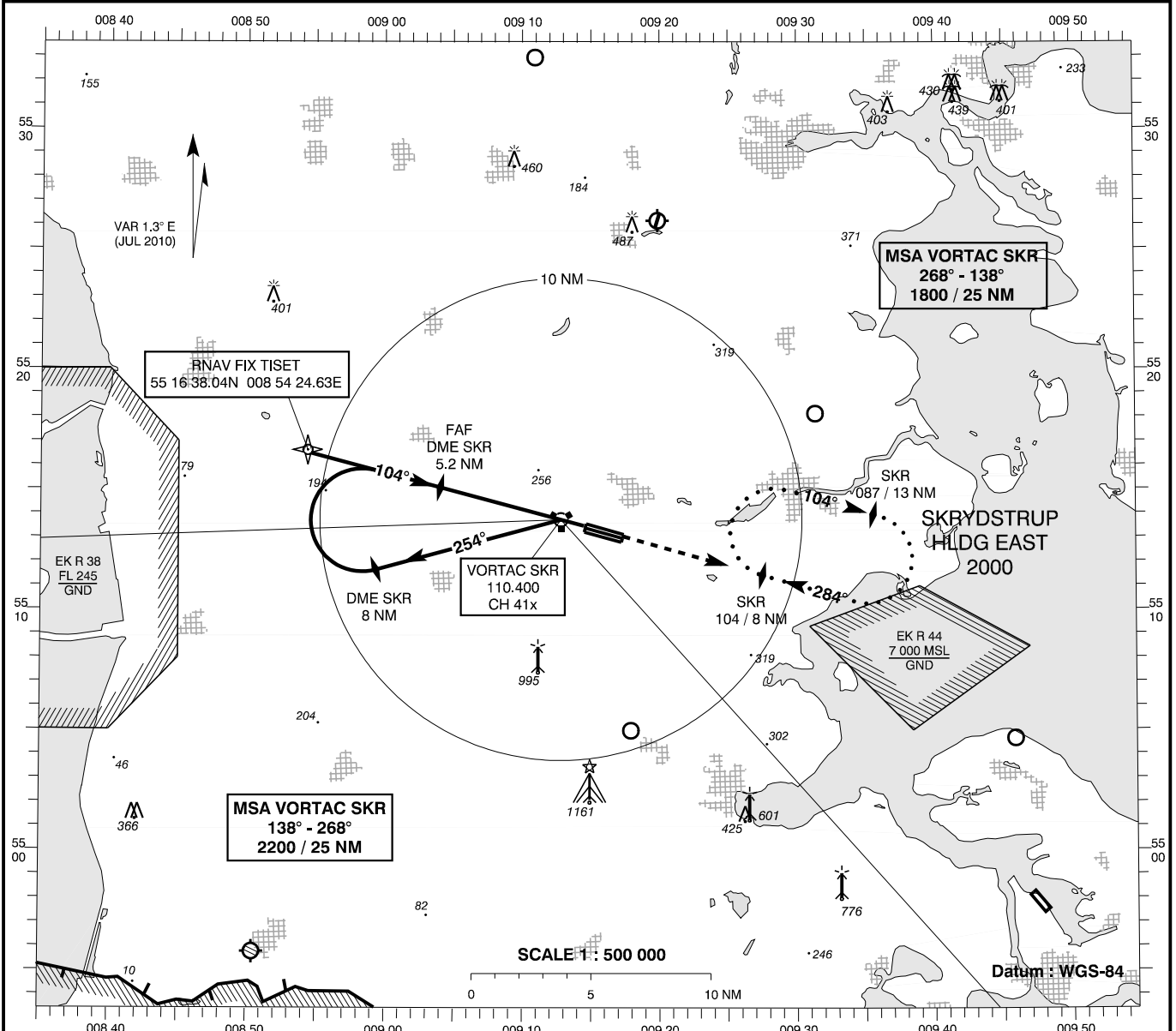


**INSTRUMENT
APPROACH
CHART - ICAO**

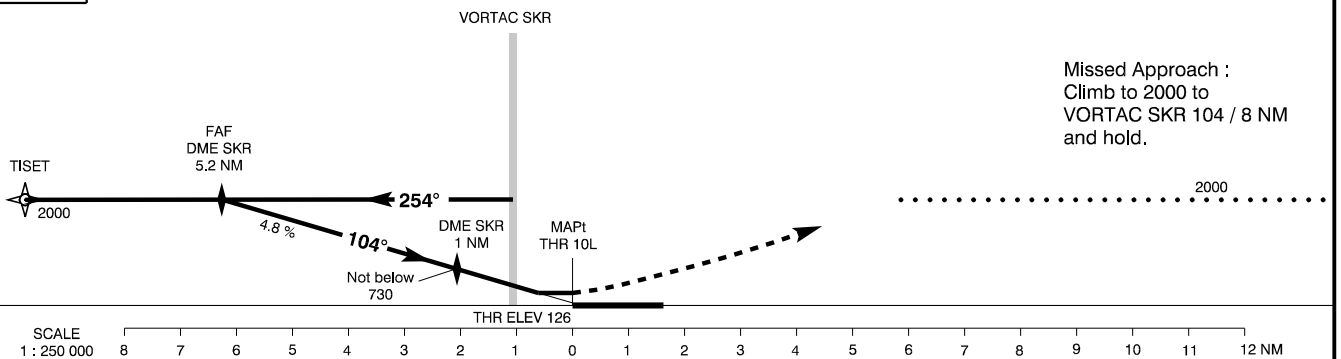
AD ELEV : 141
Bearings are magnetic
ELEV, ALT and HGT in FT

Skrydstrup APP : 127.475 300.075
Skrydstrup TWR : 128.325 259.875
Skrydstrup GCA : 119.900 359.275
ATIS : 133.900

**AD 2 - EKSP
VORTAC 10L
(ACFT CAT C / D)
Vojens / Skrydstrup (MIL AD, PPR)**



TA 3000



OCA (H)	C	D	SPECIAL CONDITIONS									
VORTAC	540 (410)	540 (410)										
SRA (Slope 2.75°)	760 (640)	760 (640)										
Circling	1000 (860)	1000 (860)										
VORTAC : Time to MAPt from FAF - DIST 6.26 NM												
GS (KT)	120	140	160	180	200	DME SKR	5	4	3	2	1	0
MIN : SEC	3 : 08	2 : 41	2 : 21	2 : 05	1 : 53	DIST to THR	6.1	5.1	4.1	3.1	2.1	1.1
ROD FT / MIN	583	680	778	875	972	Nominal ALT	1945	1650	1360	1070	775	485

Changes : VAR., RWY NR.