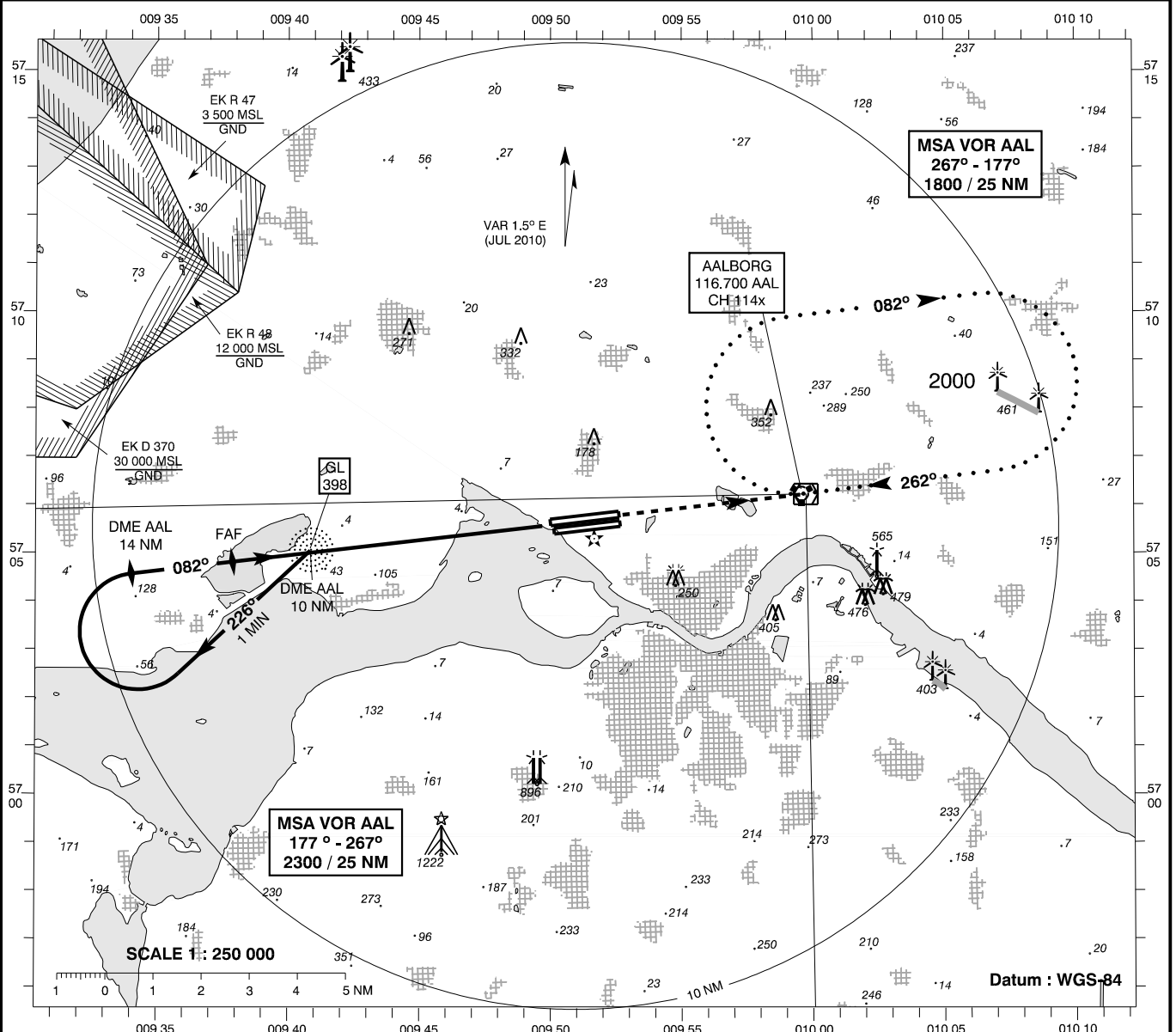


**INSTRUMENT  
APPROACH  
CHART - ICAO**

AD ELEV: 10  
Bearings are magnetic  
ELEV, ALT and HGT in FT

Aalborg APP : 123.975 309.950  
Aalborg TWR : 118.300 284.775  
ATIS : 120.475

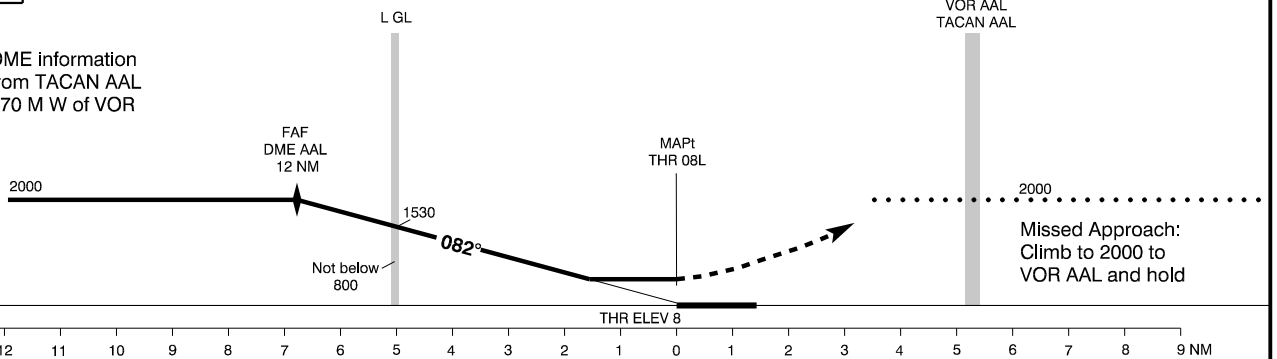
**AD 2 - EKYT  
L + DME 08L  
Aalborg**



**TA 3000**

Base turn procedure valid for speeds up to TAS 180 KT

DME information  
from TACAN AAL  
170 M W of VOR



| OCA (H)  | A         | B          | C          | D          | SPECIAL CONDITIONS |
|----------|-----------|------------|------------|------------|--------------------|
| Circling | 490 (480) | 510 (500)* | 730 (720)* | 780 (770)* | * N of AD only     |

| Time to THR 08L from L GL - DIST 5.0 NM |        |        |        |        |        |        |
|---|--------|--------|--------|--------|--------|--------|
| 90 KT                                   | 100 KT | 110 KT | 120 KT | 130 KT | 140 KT | 150 KT |
| 3 : 20                                  | 3 : 00 | 2 : 44 | 2 : 30 | 2 : 19 | 2 : 09 | 2 : 00 |

| OCL     |         |
|---------|---------|
| L + DME | 505 MSL |

Changes : Editorial.