

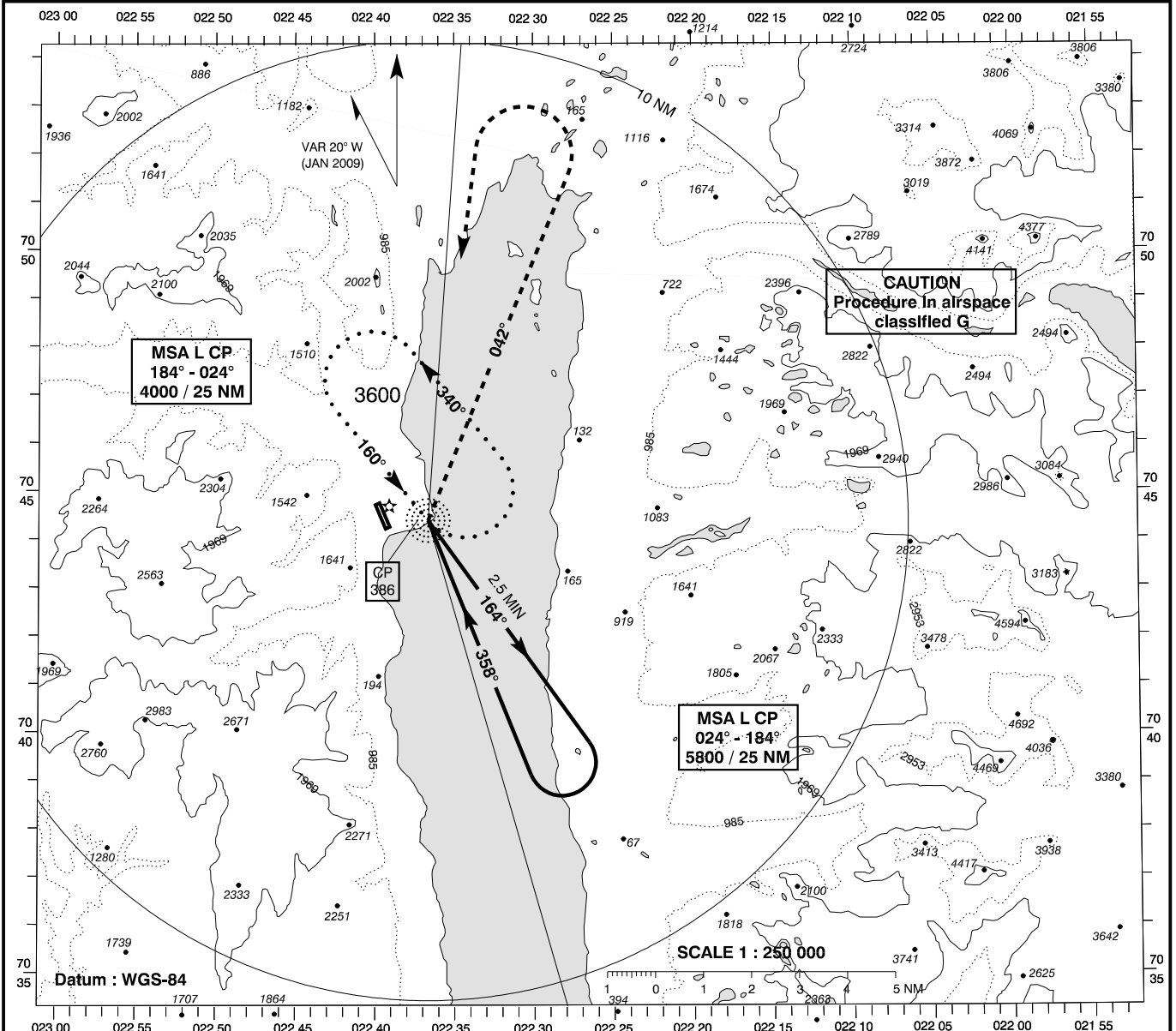
**INSTRUMENT
APPROACH
CHART - ICAO**

AD ELEV : 45

Bearings are magnetic
ELEV, ALT and HGT in FT

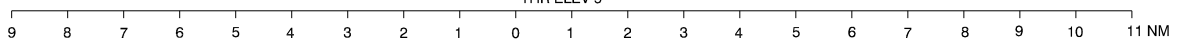
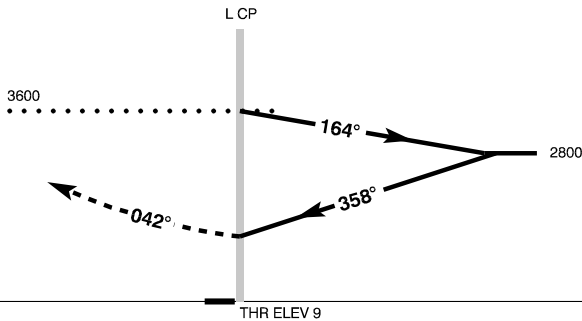
Constable Pynt AFIS : 118.100

**AD 2 - BGCO
CIRCLING 18 / 36-2
Nerlerit Inaat**



TA 6000

Missed Approach :
At L CP turn right
intercept and follow QDR CP 042°
climbing to 2300.
Turn left and return to HLDG CP
climbing to 3600.



OCA (H)	A
Circling	1000 (955)

SPECIAL CONDITIONS
Circling E of AD only.
Final descent gradient 720 FT / MIN.

Changes : VAR.