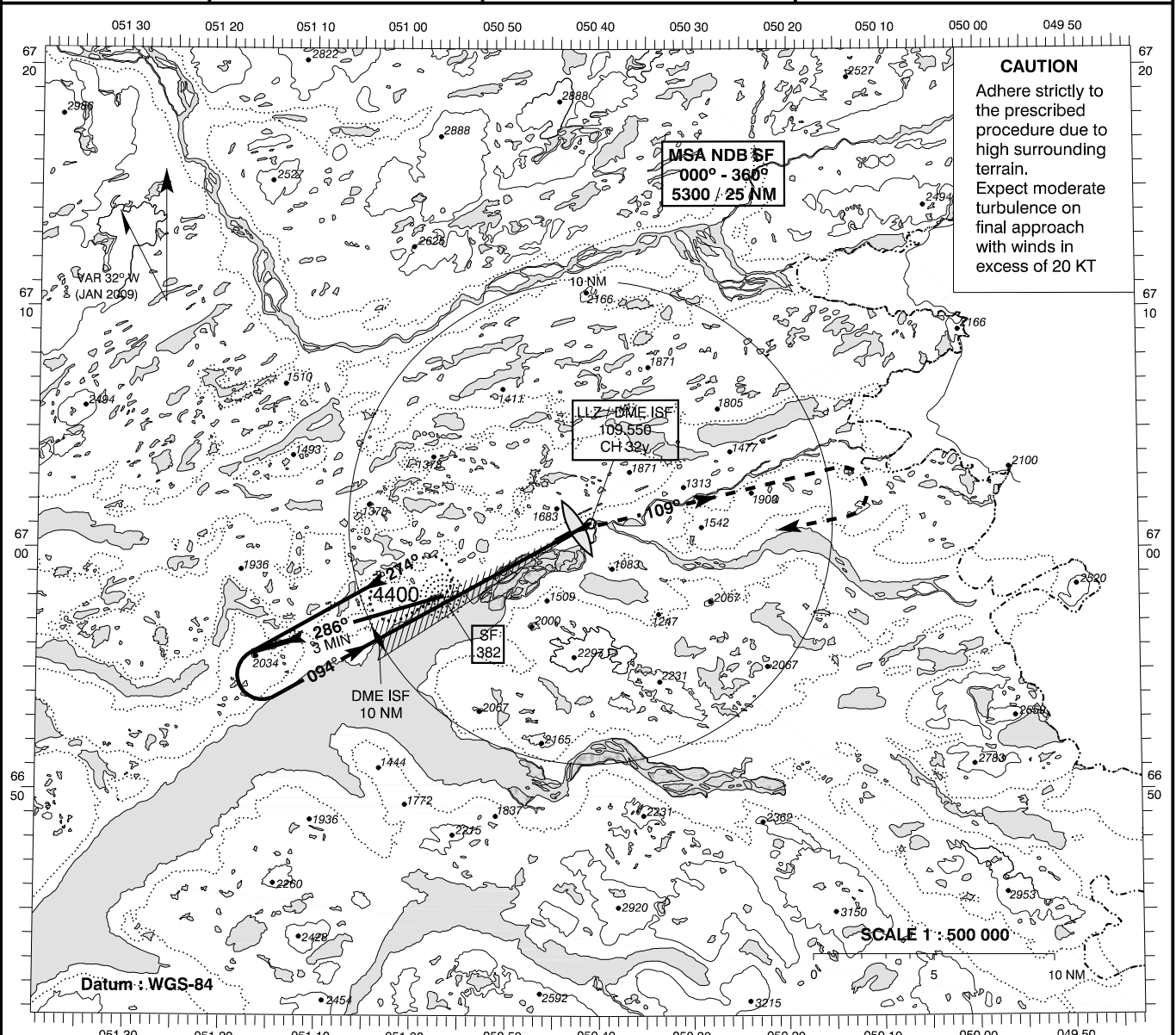


INSTRUMENT APPROACH CHART - ICAO

AD ELEV : 165
Bearings are magnetic
ELEV, ALT and HGT in FT

Sondrestrom APP : 126.200
Sondrestrom TWR : 118.300

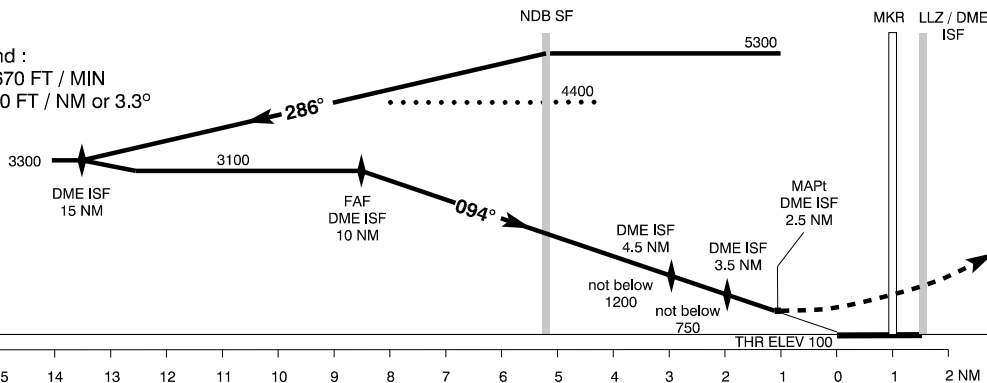
AD 2 - BGSF
LLZ / DME + MKR 09
(ACFT CAT A / B)
Kangerlussuaq



CAUTION
Adhere strictly to the prescribed procedure due to high surrounding terrain. Expect moderate turbulence on final approach with winds in excess of 20 KT

TA 7000

Rate of descend :
SF outbound 670 FT / MIN
Final APCH 350 FT / NM or 3.3°



Missed Approach :
MNM missed approach climb gradient 5%.
At DME 2.5 NM climb on LLZ course until MKR, then immediately right turn track 109° climbing to 4000 then right turn towards NDB SF climbing to 4400 to join SF HLDG

OCA (H) A B SPECIAL CONDITIONS PROFILE 1 : 250 000

OCA (H)	A	B	SPECIAL CONDITIONS						
LLZ / DME + MKR	450 (350)	450 (350)	At DME 4.5 NM pass not below 1200. At DME 3.5 NM pass not below 750						
Circling *	1500 (1335)	1900 (1735)	* S of AD only						
DME ISF	NM	10	9	8	7	6	5	4	3
DIST to THR	NM	8.4	7.4	6.4	5.4	4.4	3.4	2.4	1.4
ALT	FT	3100	2750	2400	2050	1700	1350	1000	650

Changes : VAR and RWY NR.