

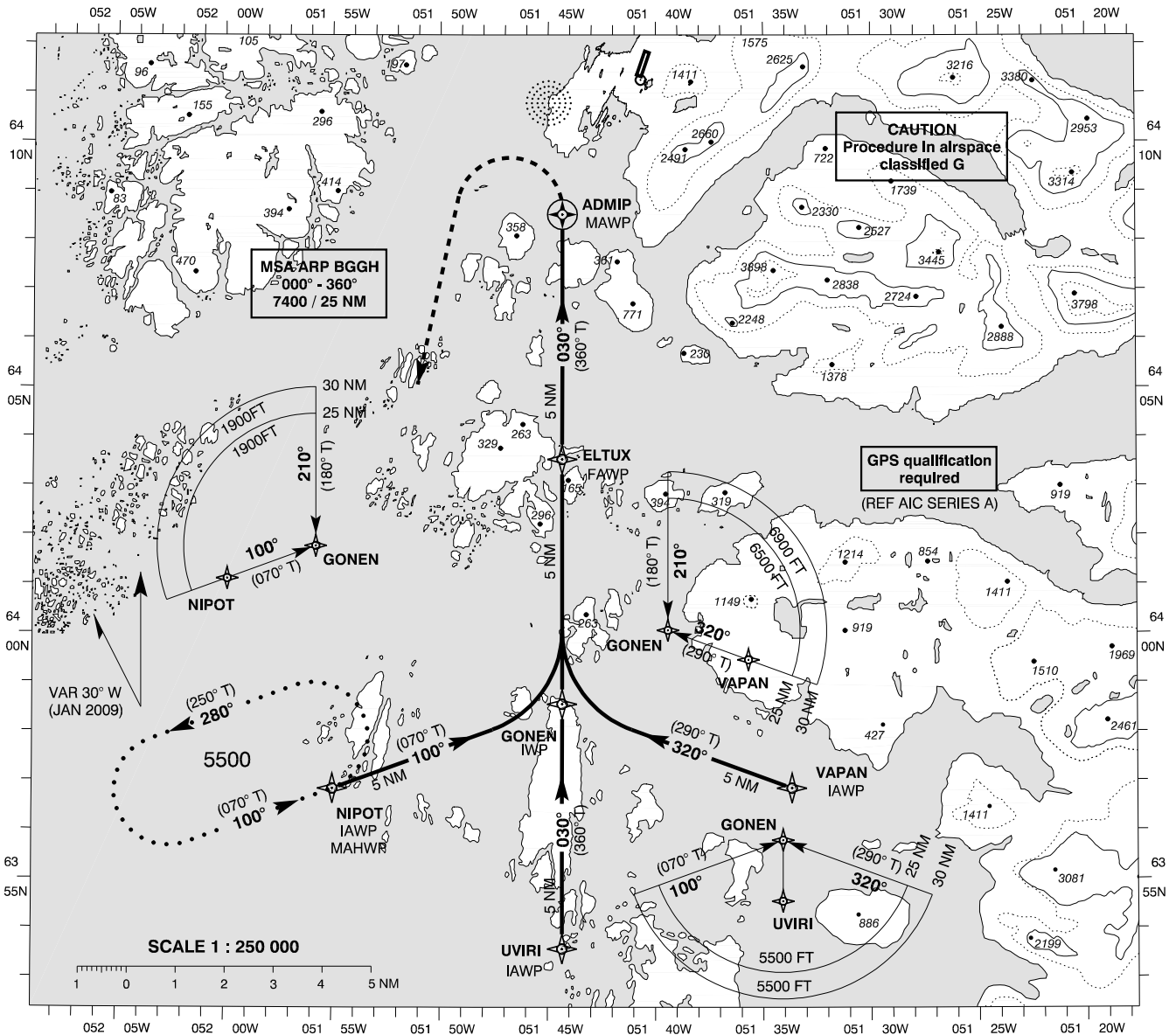
**INSTRUMENT
APPROACH
CHART - ICAO**

AD ELEV : 283

Bearings are magnetic (True)
ELEV, ALT and HGT in FT

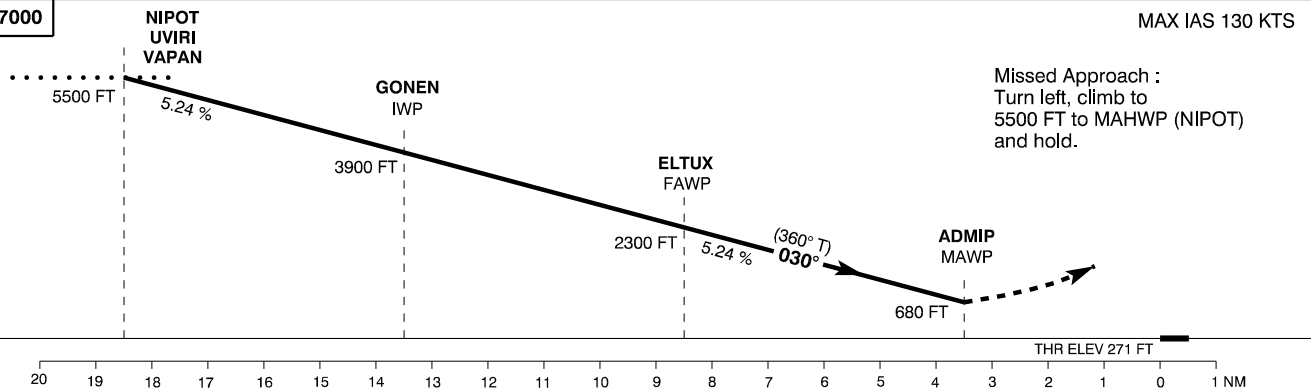
Nuuk AFIS : 119.100

**AD 2 - BGGH
RNAV (GPS) - CIRCLING-1
Nuuk**



TA 7000

MAX IAS 130 KTS



OCA (H)	A	B
Circling *	680 (401)	780 (501)

* W of RWY only

The circling is exceeding the limits of PANS-OPS which specifies the maximum allowed distance (1 NM) from the nominal track to the ARP. Actual distance is 3 NM.

Changes : ELEV sector UVIRI.