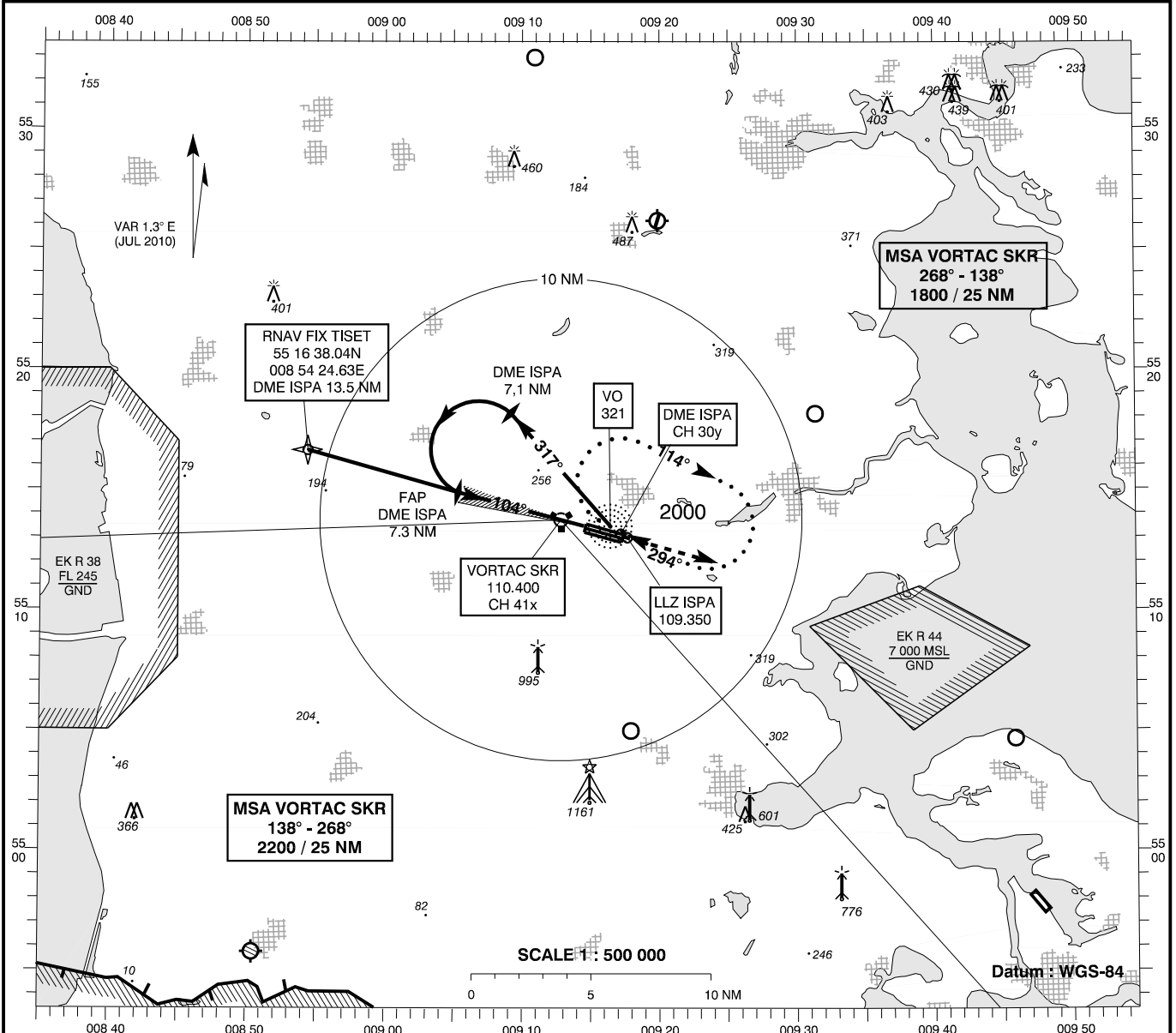


**INSTRUMENT  
APPROACH  
CHART - ICAO**

AD ELEV : 141  
Bearings are magnetic  
ELEV, ALT and HGT in FT

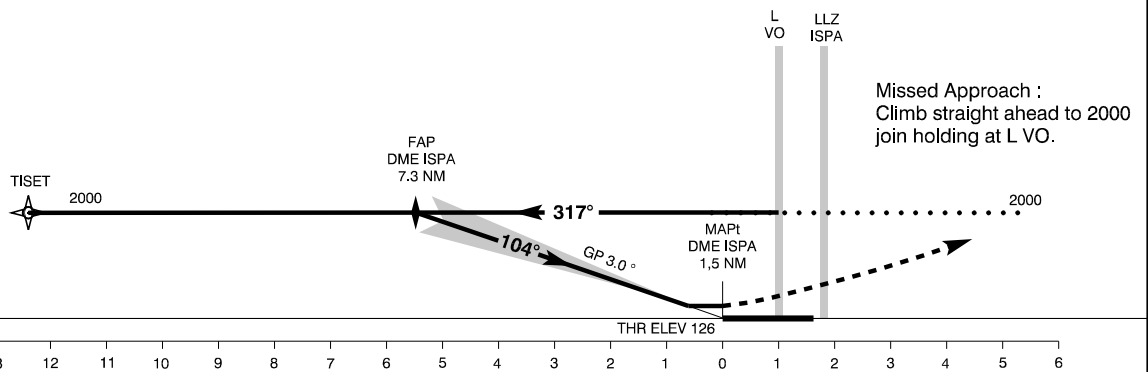
Skrydstrup APP : 127.475 300.075  
Skrydstrup TWR : 128.325 259.875  
ATIS : 133.900

**AD 2 - EKSP  
ILS 10L  
(ACFT CAT C / D)  
Vojens / Skrydstrup (MIL AD, PPR)**



TA 3000

RDH 50



Changes : VAR., RWY NR.

OCA (H)	C	D	SPECIAL CONDITIONS			
ILS CAT I	279 (153)	289 (163)				
GP INOP	580 (440)	580 (440)				
Circling	740 (600)	830 (690)				
DME ISPA	2	3	4	5	6	7
DIST to THR	0.5	1.5	2.5	3.5	4.5	5.5
Nominal ALT	340	650	970	1290	1610	1930

ILS CAT I

GP INOP

Circling

DME ISPA	2	3	4	5	6	7
DIST to THR	0.5	1.5	2.5	3.5	4.5	5.5
Nominal ALT	340	650	970	1290	1610	1930