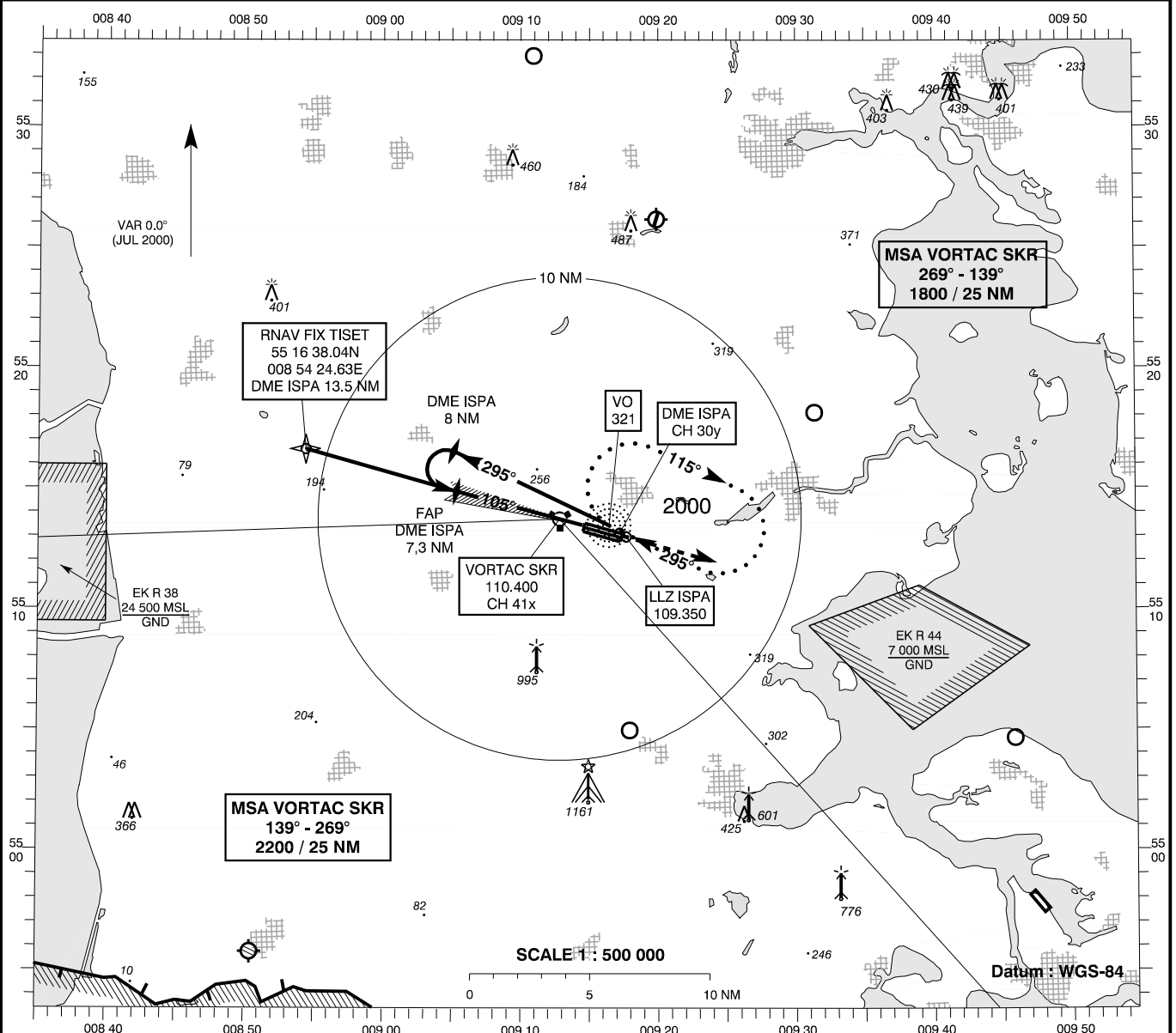


**INSTRUMENT
APPROACH
CHART - ICAO**

AD ELEV : 141
Bearings are magnetic
ELEV, ALT and HGT in FT

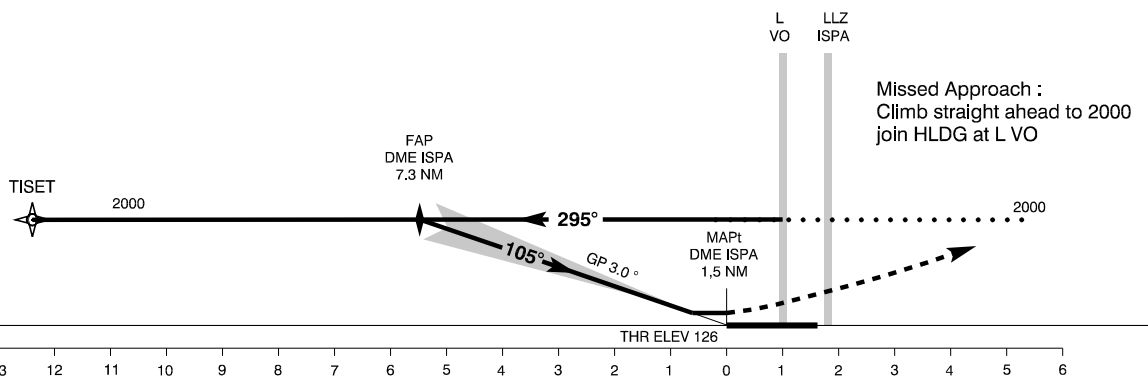
Skrydstrup APP : 127.475 300.075
Skrydstrup TWR : 128.325 259.875
ATIS : 133.900

**AD 2 - EKSP
ILS 11L
(ACFT CAT A / B)
Vojens / Skrydstrup (MIL AD, PPR)**



TA 3000

RDH 50



OCA (H)	A		B		SPECIAL CONDITIONS	
ILS CAT I	260 (134)	270 (144)				
GP INOP	580 (440)	580 (440)				
Circling	640 (500)	640 (500)				
DME ISPA	2	3	4	5	6	7
DIST to THR	0.5	1.5	2.5	3.5	4.5	5.5
Nominal ALT	340	650	970	1290	1610	1930

Changes : ATIS FREQ added.