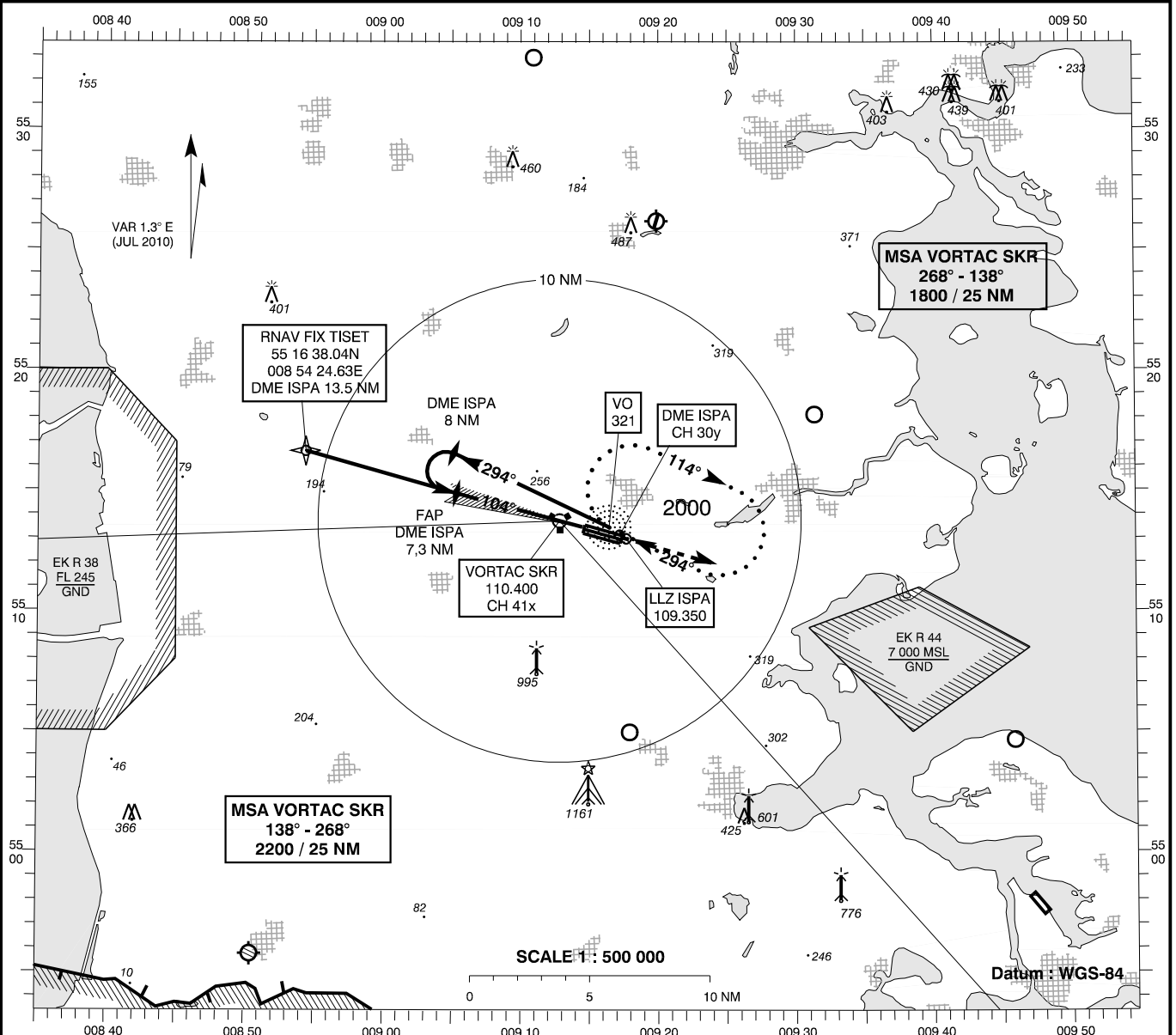


INSTRUMENT APPROACH CHART - ICAO

AD ELEV : 141
 Bearings are magnetic
 ELEV, ALT and HGT in FT

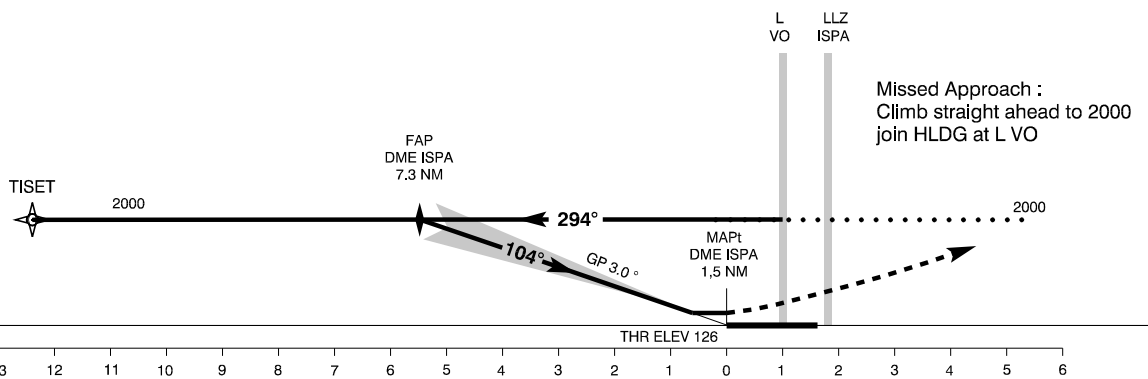
Skrydstrup APP : 127.475 300.075
 Skrydstrup TWR : 128.325 259.875
 ATIS : 133.900

AD 2 - EKSP ILS 10L (ACFT CAT A / B)
Vojens / Skrydstrup (MIL AD, PPR)



TA 3000

RDH 50



Changes : VAR., RWY NR.

OCA (H)	A	B	SPECIAL CONDITIONS			
ILS CAT I	260 (134)	270 (144)				
GP INOP	580 (440)	580 (440)				
Circling	640 (500)	640 (500)				
DME ISPA	2	3	4	5	6	7
DIST to THR	0.5	1.5	2.5	3.5	4.5	5.5
Nominal ALT	340	650	970	1290	1610	1930