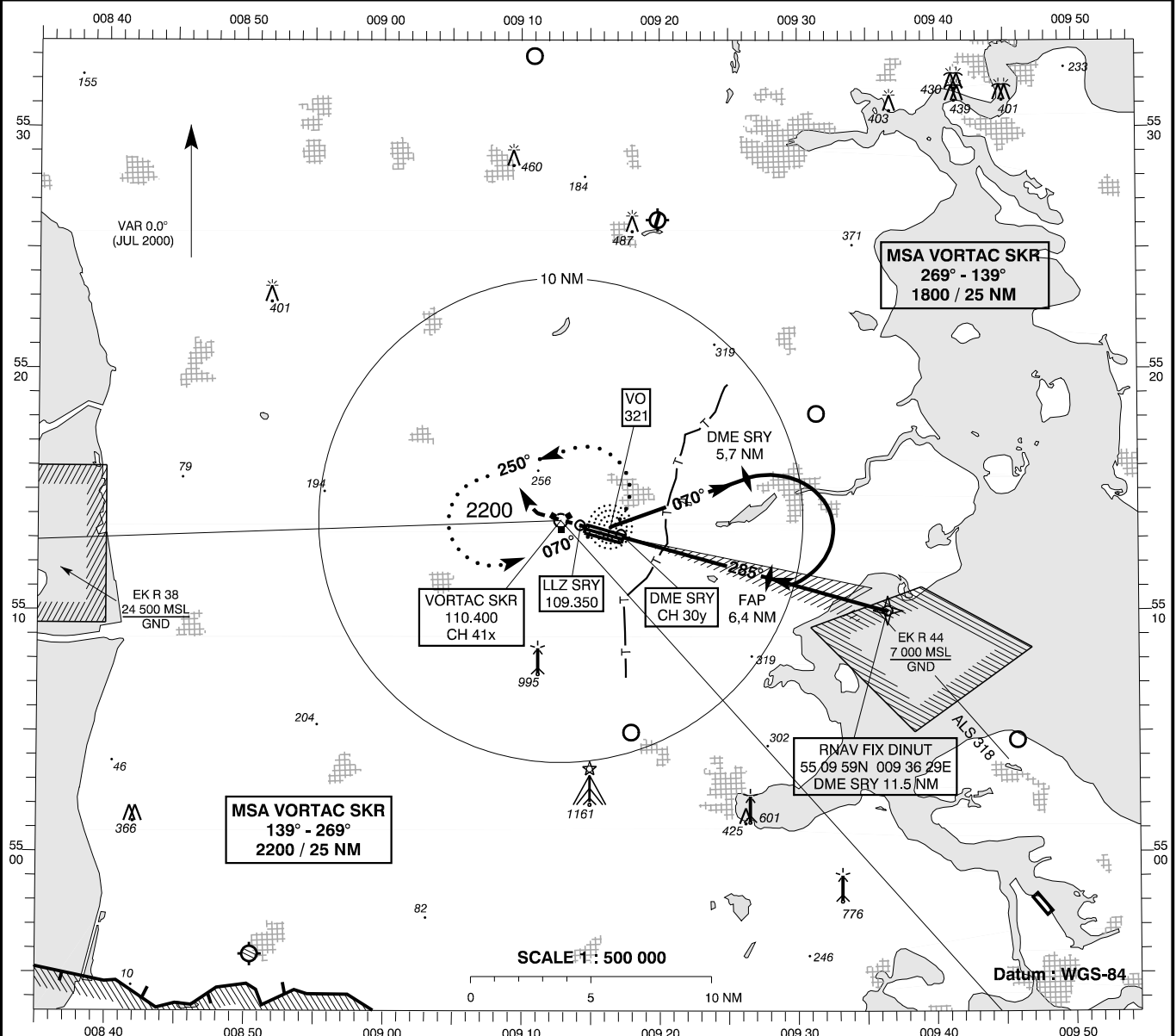


INSTRUMENT APPROACH CHART - ICAO

AD ELEV : 141
 Bearings are magnetic
 ELEV, ALT and HGT in FT

Skrydstrup APP : 127.475 300.075
 Skrydstrup TWR : 128.325 259.875
 ATIS : 133.900

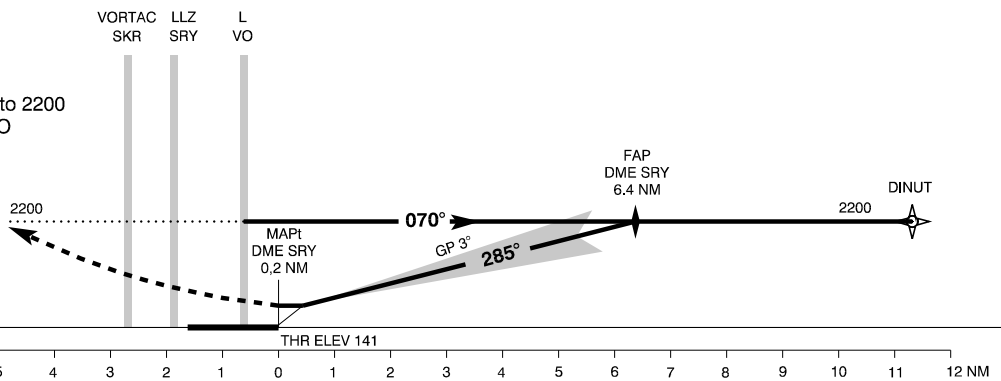
AD 2 - EKSP
ILS 29R (ACFT CAT C/D)
(MIL AD, PPR)
Vojens / Skrydstrup



TA 3000

RDH 41

Missed Approach :
 Climb straight ahead to 2200
 and join HLDG at L VO



OCA (H)	C	D
ILS CAT I	292 (151)	302 (161)
GP INOP *	590 (450)	590 (450)
Circling	740 (600)	830 (690)

SPECIAL CONDITIONS

DME SRY	1	2	3	4	5	6
DIST TO THR	0.8	1.8	2.8	3.8	4.8	5.8
Nominal ALT	440	760	1070	1390	1710	2030

Changes : ATIS FREQ added.