

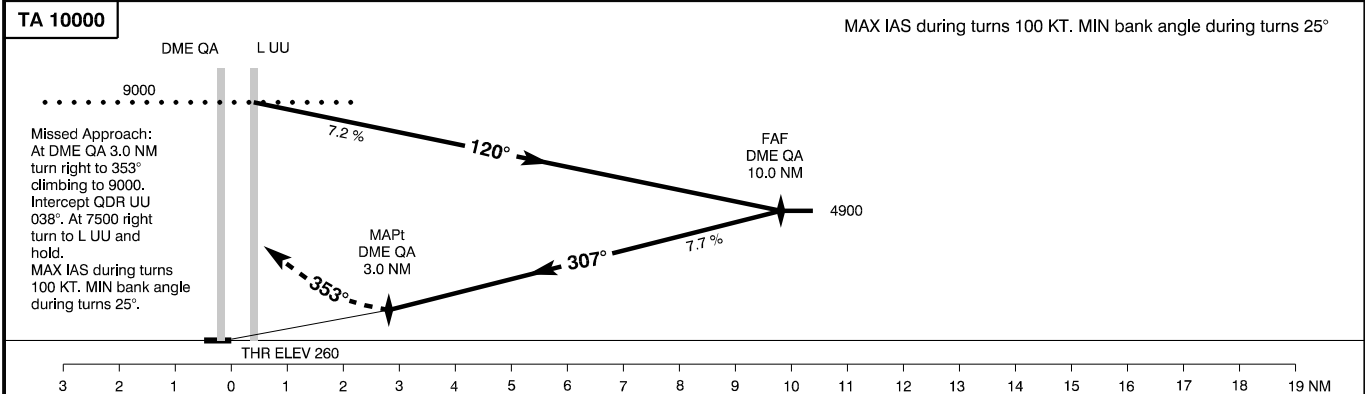
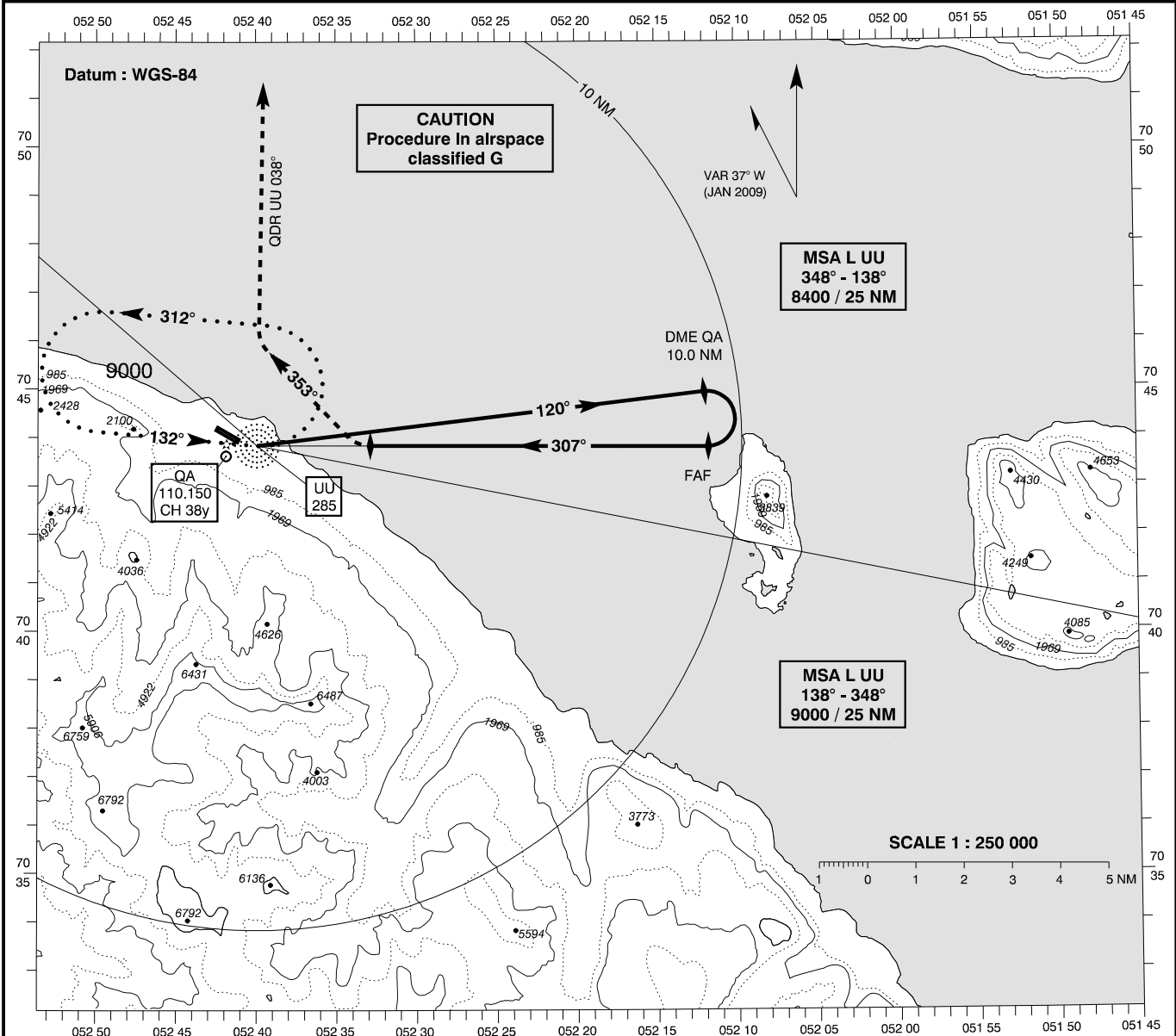
**INSTRUMENT
APPROACH
CHART - ICAO**

AD ELEV : 289

Bearings are magnetic
ELEV, ALT and HGT in FT

Qaarsut AFIS : 119.500

AD 2 - BGUQ
Circling 16 / 34-3
Uummannaq / Qaarsut



OCA (H)	A		SPECIAL CONDITIONS					
Circling *	1150 (860)		* Northeast of AD only.					
Time to MAPt from FAF - DIST 7.0 NM								
GS (KT)	60	70	80	90	100	110	120	Timing not authorized for defining the MAPt
MIN : SEC	7 : 00	6 : 00	5 : 15	4 : 40	4 : 12	3 : 49	3 : 30	
ROD FT / MIN	468	546	624	702	780	858	936	
DME QA	3	4	5	6	7	8	9	10
DIST to THR 34	2.8	3.8	4.8	5.8	6.8	7.8	8.8	9.8
ALT	1645	2110	2280	3045	3515	3985	4450	4900

Changes : VAR.