

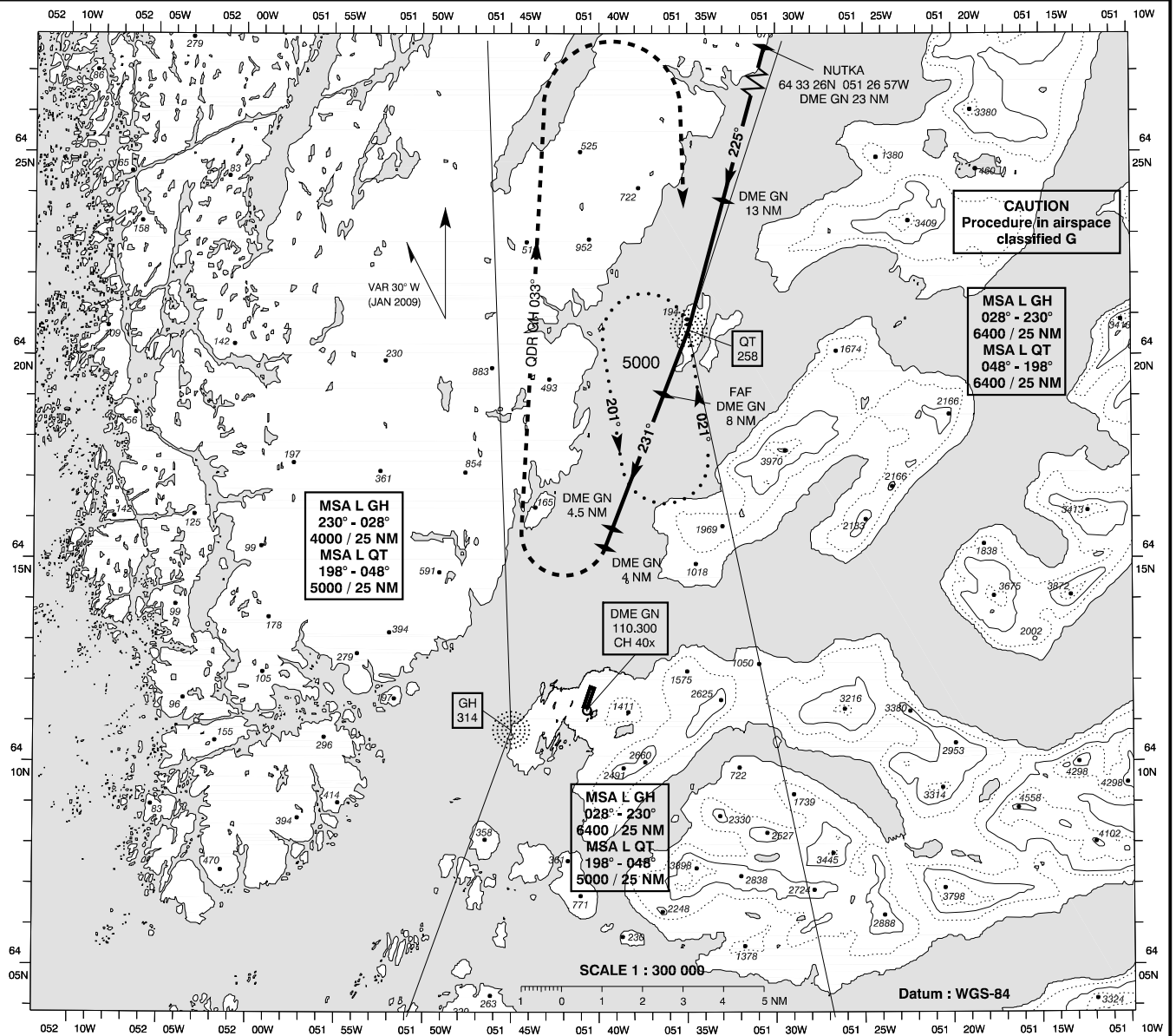
**INSTRUMENT  
APPROACH  
CHART - ICAO**

AD ELEV : 283

Bearings are magnetic  
ELEV, ALT and HGT in FT

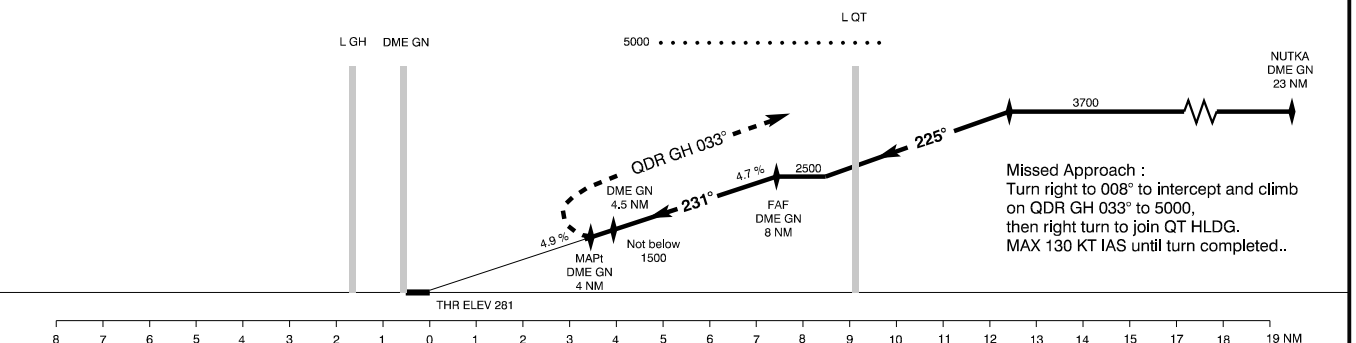
Nuuk AFIS : 119.100

**AD 2 - BGGH**  
**NDB + DME CIRCLING 05 / 23-2**  
**Nuuk**



TA 7000

MAX APCH speed 130 KT IAS



**Missed Approach :**  
Turn right to 008° to intercept and climb on QDR GH 033° to 5000, then right turn to join QT HLDG.  
MAX 130 KT IAS until turn completed..

OCA (H)	A		B		SPECIAL CONDITIONS					
	780 (490)	910 (620)	* W of RWY only							
Circling *	780 (490)	910 (620)								
DME GN	NM	4	4.5	5	6	7	8			
DIST to THR	NM	3.4	3.9	4.4	5.4	6.4	7.4			
ALT	FT	1350	1500	1645	1920	2210	2500			
GS	KT	50	60	70	80	90	100	110	120	130
Time FAF to DME GN 4.5		4 : 12	3 : 30	3 : 00	2 : 38	2 : 20	2 : 06	1 : 55	1 : 45	1 : 37
Rate of desc.	FT / MIN	235	282	329	376	423	470	517	564	611
Time DME GN 4.5 to MAPt		0 : 36	0 : 30	0 : 26	0 : 23	0 : 20	0 : 18	0 : 17	0 : 15	0 : 14
Rate of desc.	FT / MIN	245	294	343	392	441	490	539	588	637

Timing not authorized for defining the MAPt

Changes : VAR.