

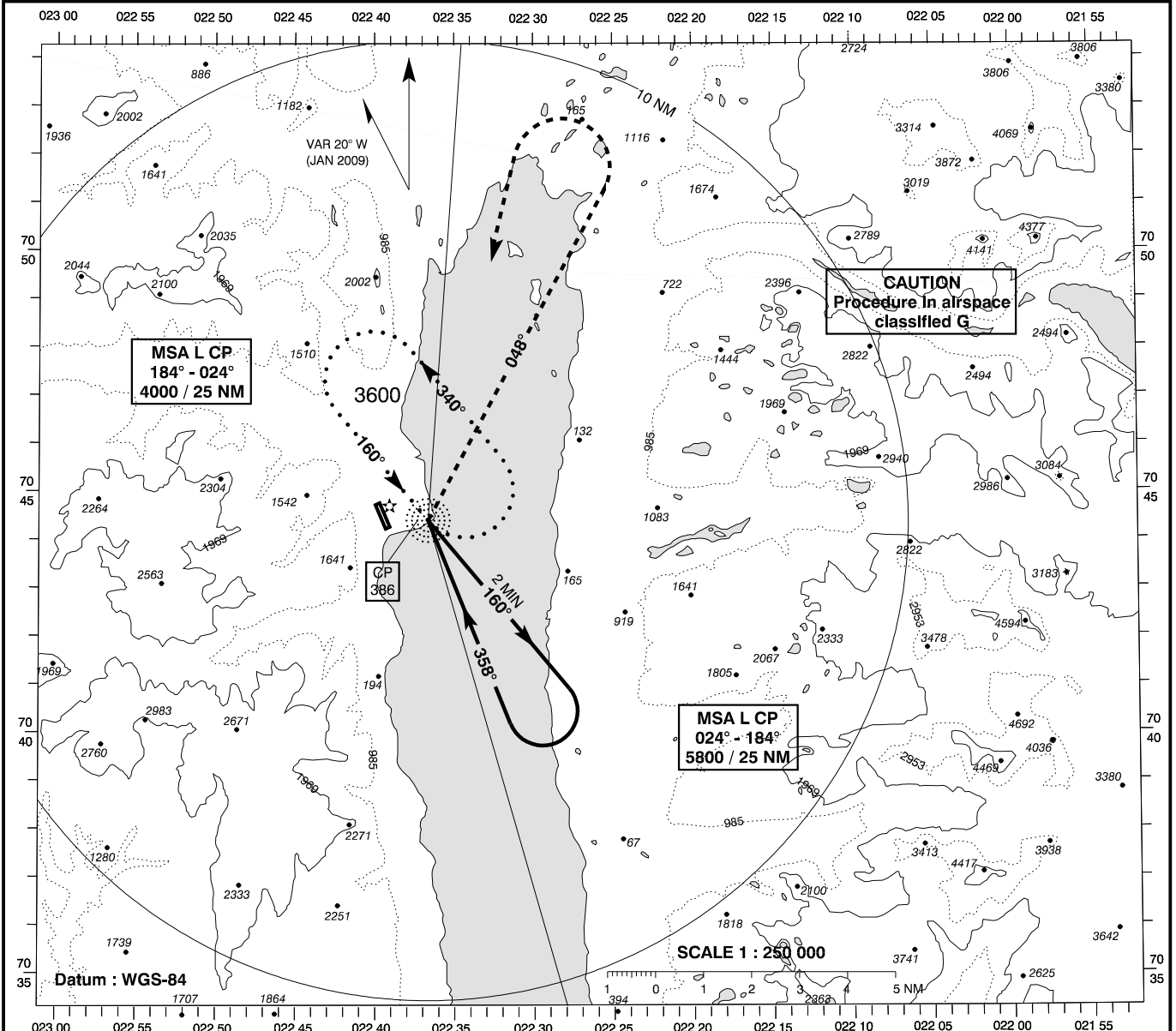
**INSTRUMENT
APPROACH
CHART - ICAO**

AD ELEV : 45

Bearings are magnetic
ELEV, ALT and HGT in FT

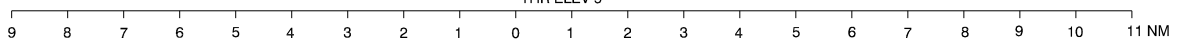
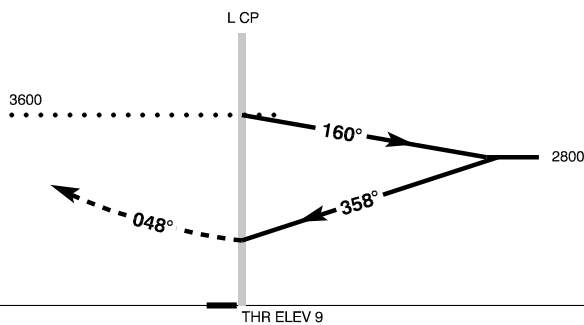
Constable Pynt AFIS : 118.100

**AD 2 - BGCO
CIRCLING 18 / 36-1
Nerlerit Inaat**



TA 6000

Missed Approach :
At L CP turn right
intercept and follow QDR CP 048°
climbing to 2300.
Turn left and return to HLDG CP
climbing to 3600.



OCA (H)	A	B
Circling	1200 (1155)	1200 (1155)

SPECIAL CONDITIONS

MAX APCH and circling speed 130 KT.
Circling E of AD only.
Descent inbound track 800 FT / MIN.

Changes : VAR.