

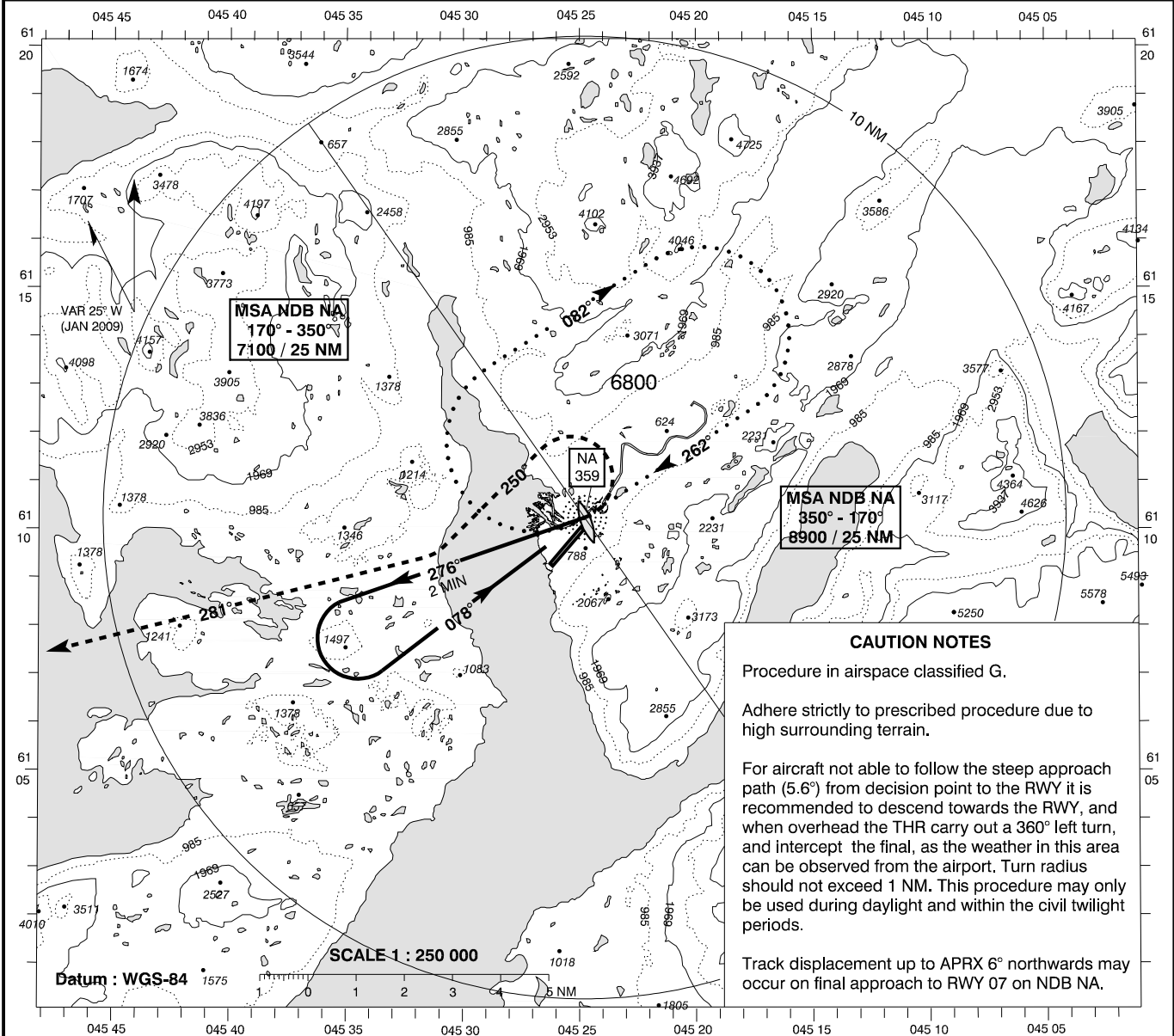
**INSTRUMENT  
APPROACH  
CHART - ICAO**

AD ELEV : 112

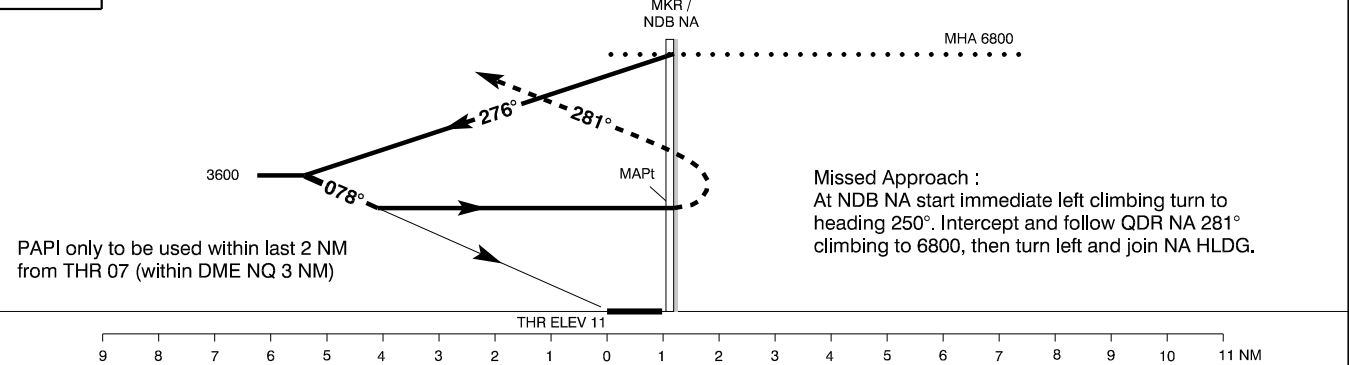
Bearings are magnetic  
ELEV, ALT and HGT in FT

Narsarsuaq AFIS : 119.100

**AD 2 - BGBW  
NDB 07 - 2  
Narsarsuaq**



**TA 9000**



PAPI only to be used within last 2 NM from THR 07 (within DME NQ 3 NM)

OCA (H)	A	B	SPECIAL CONDITIONS
Straight in	2760 (2750)	2760 (2750)	MAX missed APCH turning speed 130 KT IAS. MNM 20° bank. Circling N of RWY only.
Circling	2800 (2790)	2800 (2790)	If visual contact is lost during visual circling: Intercept and follow QDR NA 281° as soon as possible climbing to 6800, then turn left and join NA HLDG.

State Minima : AD 2 - BGBW - 5

Changes : VAR.