

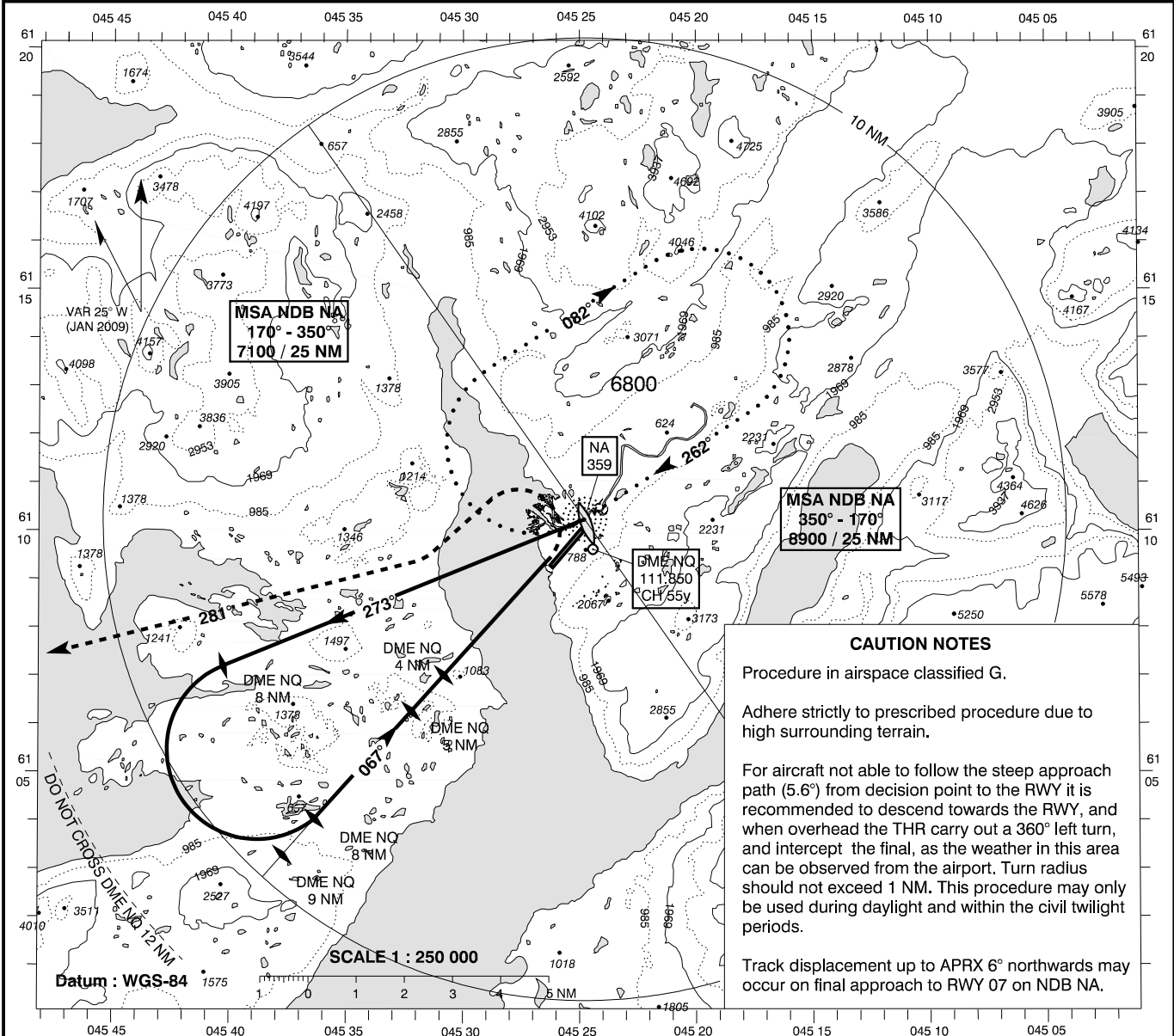
**INSTRUMENT
APPROACH
CHART - ICAO**

AD ELEV : 112

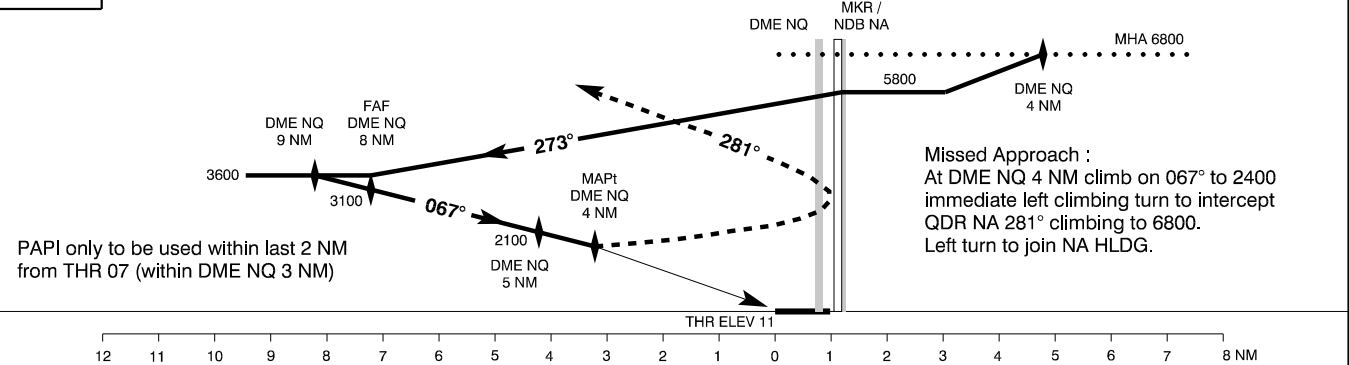
Bearings are magnetic
ELEV, ALT and HGT in FT

Narsarsuaq AFIS : 119.100

**AD 2 - BGBW
NDB + DME 07 - 1
Narsarsuaq**



TA 9000



OCA (H)	A	B	C	MNM missed APCH climb gradient	SPECIAL CONDITIONS					
Straight in	1800 (1790)	1800 (1790)	1800 (1790)	4 %	MAX HLDG and APCH speed 220 KT IAS. MAX missed APCH turning speed 160 KT IAS. Circling N of RWY only. If visual contact is lost during visual circling: Intercept and follow QDR NA 281° as soon as possible climbing to 6800, then turn left and join NA HLDG.					
Straight in	1500 (1490)	1500 (1490)		6 %						
Circling	1800 (1790)	2400 (2390)	3500 (3490)							
DME NQ	NM	1	2	3	4	5	6	7	8	9
DIST to THR	NM	0	1	2	3	4	5	6	7	8
ALT	FT	60	600	1200	1800	2100	2430	2760	3100	3600

State Minima : AD 2 - BGBW - 5

Changes : VAR.