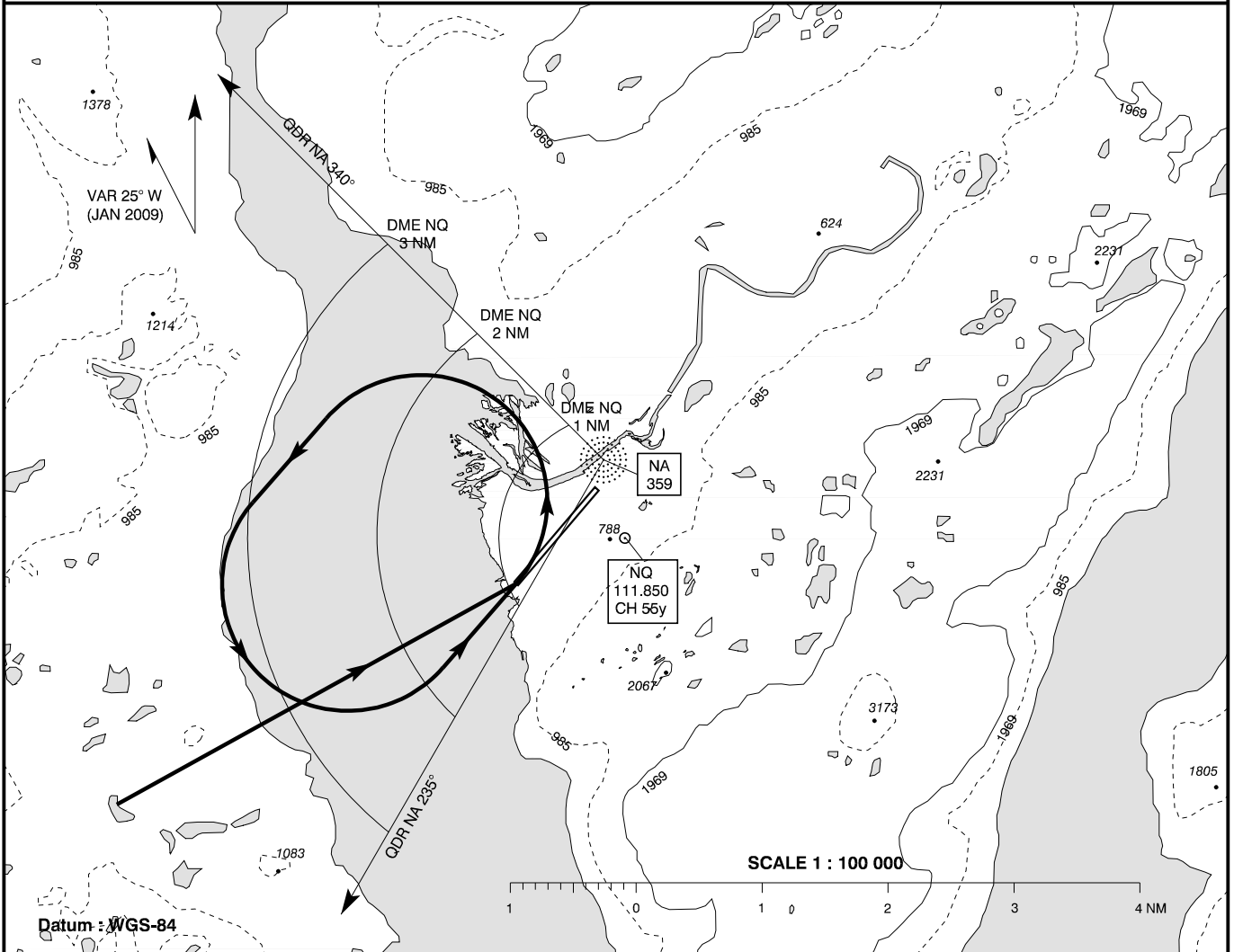


VMC ARRIVAL CHART

AD 2 - BGBW
VMC ARR 07
Narsarsuaq



VISUAL ARRIVAL TRACKS have been established. The tracks may be used in connection with the IAL procedures.

For aircraft not able to follow the steep approach path to the RWY it is recommended to descend towards the RWY, and when overhead THR 07 carry out a 360° left turn, and intercept the final, as the weather in this area can be observed from the airport. Turn radius should not exceed 1 NM. This procedure may only be used during daylight and within the civil twilight periods.

Changes : VAR.