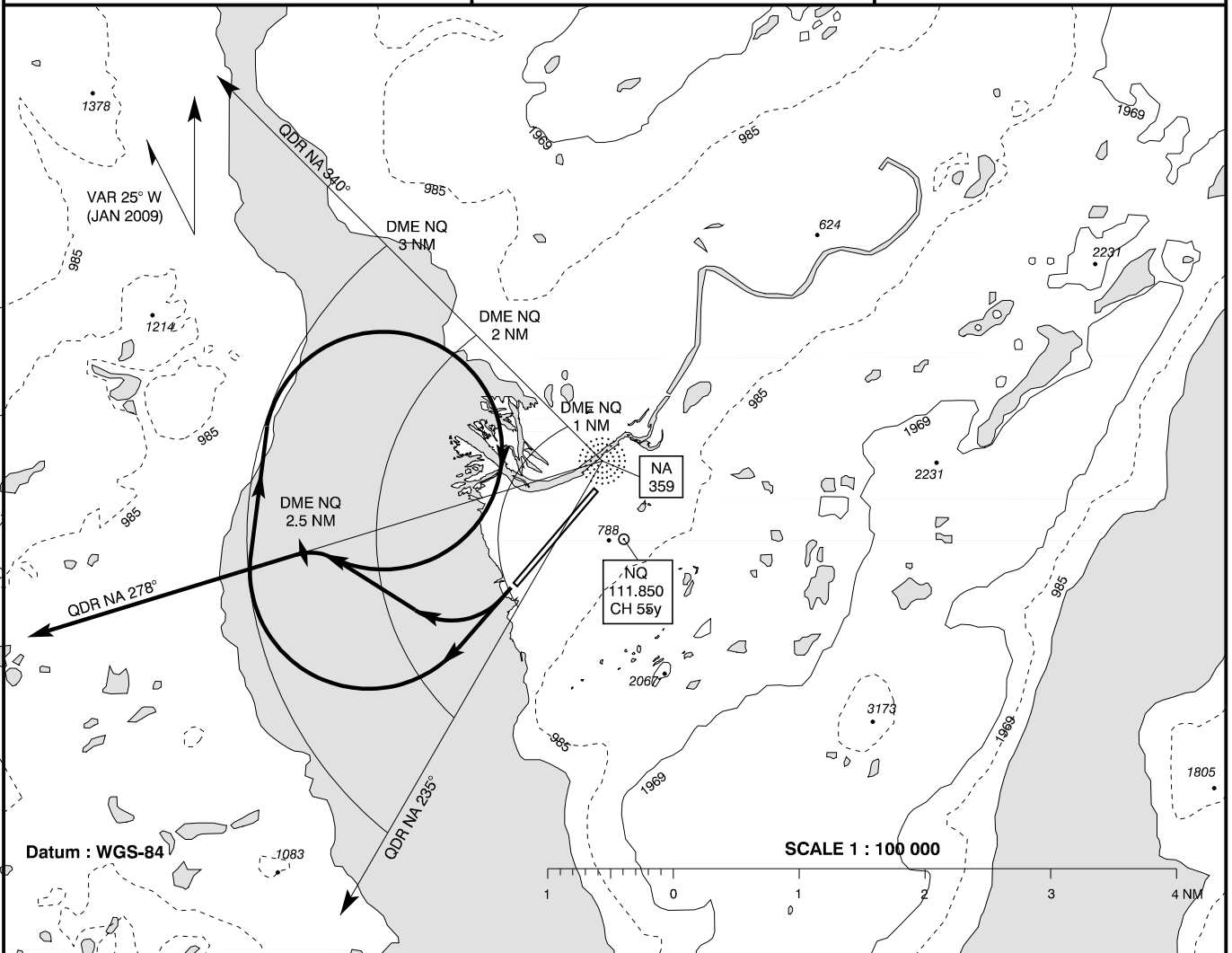


**STANDARD DEPARTURE CHART -  
INSTRUMENT (SID) - ICAO**

Transition Altitude : 9000

Bearings, tracks and radials are magnetic  
ELEV / ALT in FT

**AD 2 - BGBW  
SID 25  
Narsarsuaq**



Climb visual to 1200, intercept and follow QDR NA 278° climbing to MSA (7100).  
Pass QDR NA 278° / DME NQ 2.5 NM at 1200 or above.

MNM requirement IMC : Climb gradient 200 FT / NM.

Changes : VAR.