

INSTRUMENT APPROACH CHART - ICAO

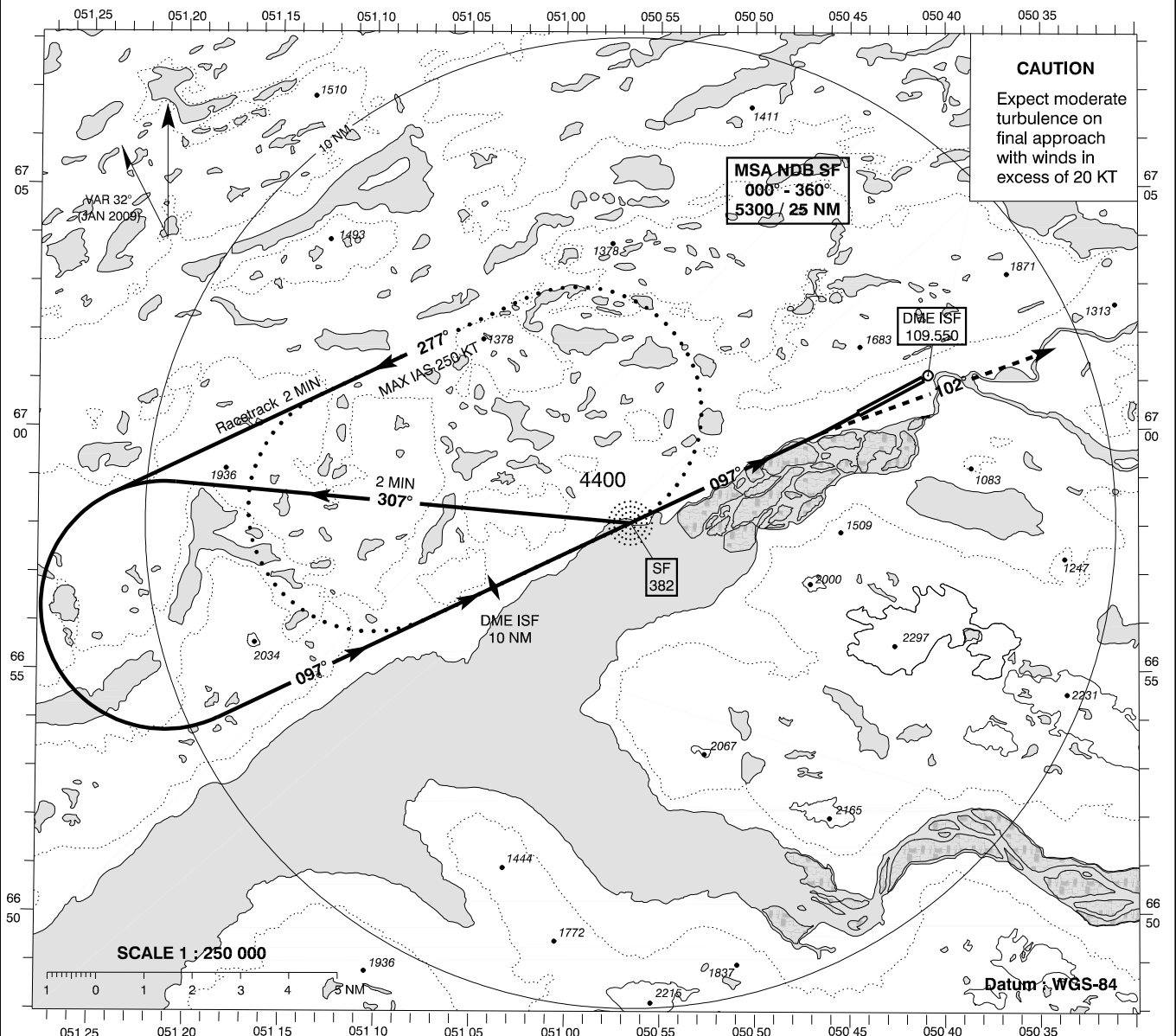
AD ELEV : 165

Bearings are magnetic
ELEV, ALT and HGT in FT

Sondrestrom APP : 126.200

Sondrestrom TWR : 118.300

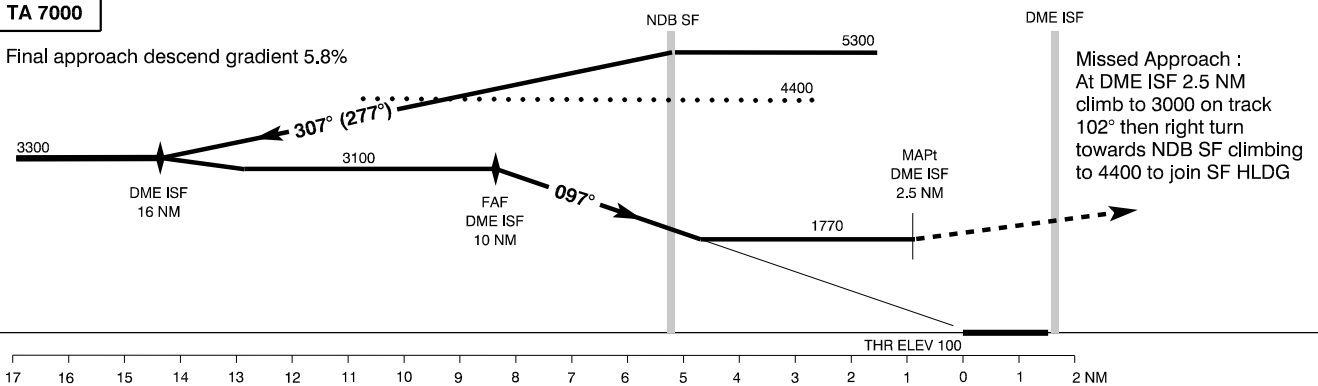
AD 2 - BGSF
NDB + DME 09
(ACFT CAT C / D)
Kangerlussuaq



CAUTION
Expect moderate turbulence on final approach with winds in excess of 20 KT

TA 7000

Final approach descend gradient 5.8%



Changes : VAR and RWY NR.

| OCA (H) | C | D | SPECIAL CONDITIONS | | | |
|-------------|-------------|-------------|--------------------|------|------|------|
| NDB + DME | 1770 (1670) | 1770 (1670) | | | | |
| Circling * | 2500 (2335) | 2800 (2635) | * S of AD only | | | |
| DME ISF | NM | 10 | 9 | 8 | 7 | 6 |
| DIST to THR | NM | 8.4 | 7.4 | 6.4 | 5.4 | 4.4 |
| ALT | FT | 3100 | 2750 | 2400 | 2050 | 1770 |