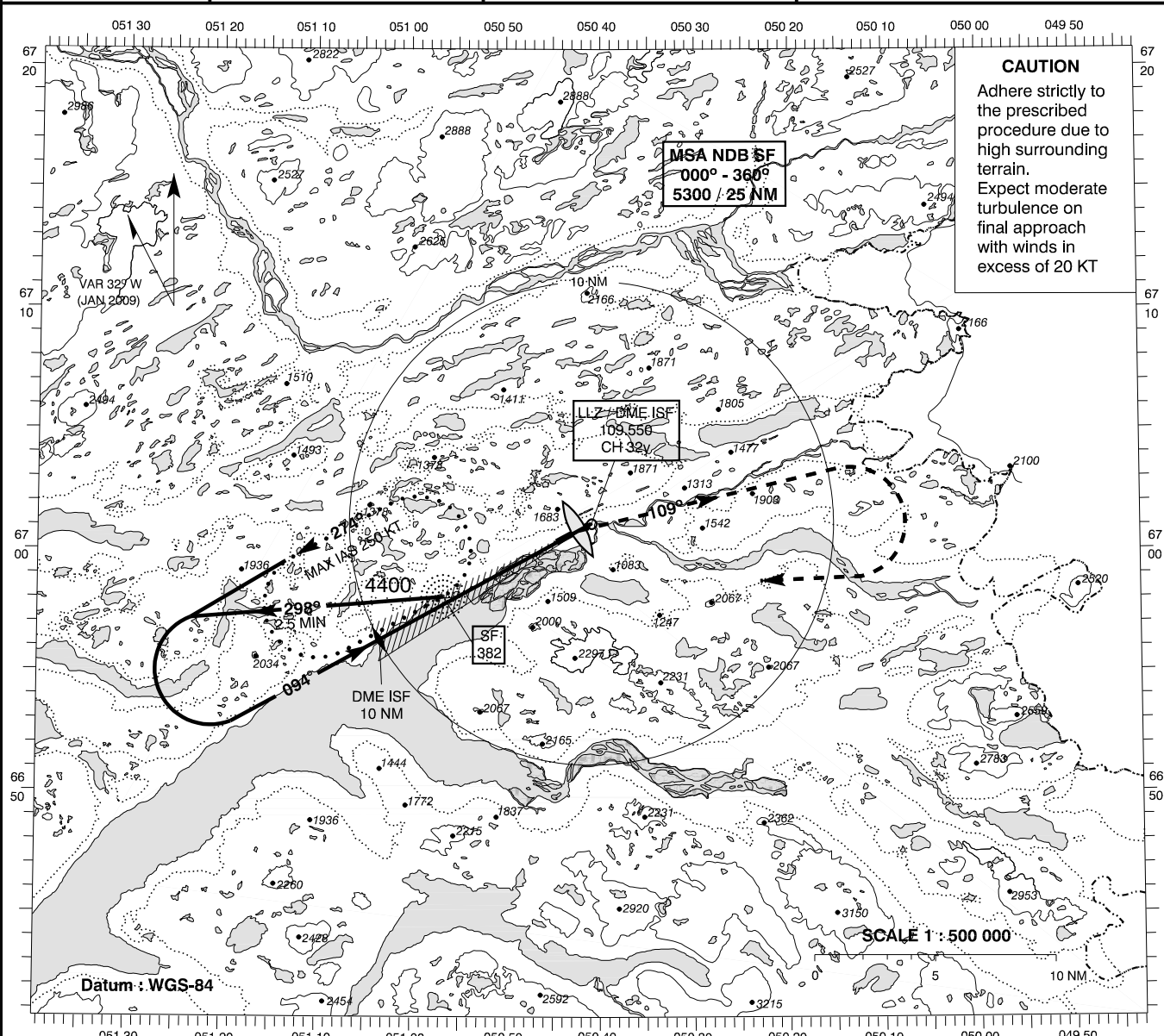


INSTRUMENT APPROACH CHART - ICAO

AD ELEV : 165
 Bearings are magnetic
 ELEV, ALT and HGT in FT

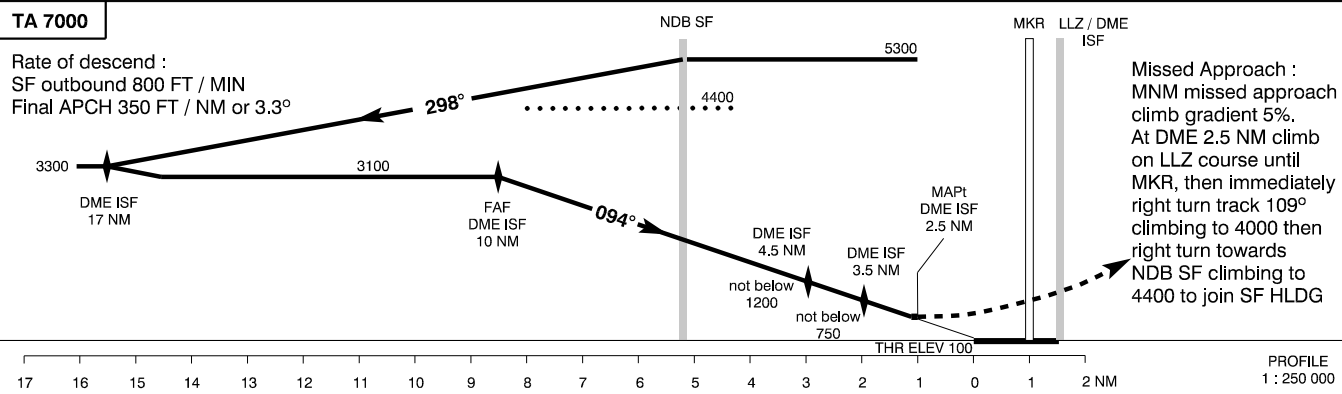
Sondrestrom APP : 126.200
 Sondrestrom TWR : 118.300

**AD 2 - BGSF
 LLZ / DME + MKR 00
 (ACFT CAT C / D)
 Kangerlussuaq**



TA 7000

Rate of descend :
 SF outbound 800 FT / MIN
 Final APCH 350 FT / NM or 3.3°



OCA (H)	C	D	SPECIAL CONDITIONS						
LLZ / DME + MKR	450 (350)	450 (350)	At DME 4.5 NM pass not below 1200. At DME 3.5 NM pass not below 750						
Circling *	2500 (2335)	2800 (2635)	* S of AD only						

DME ISF	NM	10	9	8	7	6	5	4	3
DIST to THR	NM	8.4	7.4	6.4	5.4	4.4	3.4	2.4	1.4
ALT	FT	3100	2750	2400	2050	1700	1350	1000	650

Changes : VAR and RWY NR.