

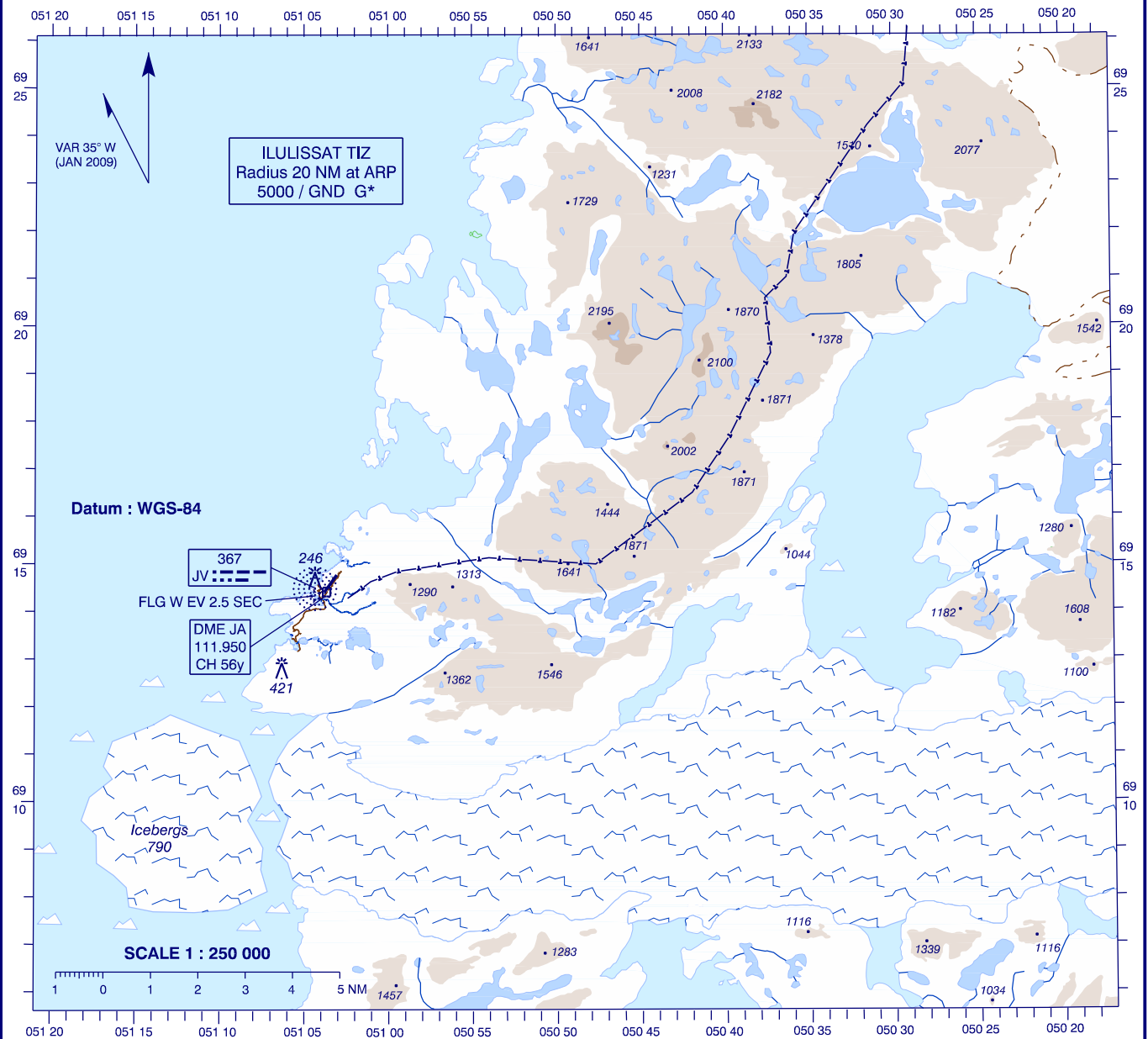
**VISUAL
APPROACH
CHART - ICAO**

AD ELEV: 95 FT

Bearings are magnetic
ELEV, ALT and HGT in FT

Ilulissat AFIS : 119,100

**AD 2 - BGJN
VAC
Ilulissat**



Spot elevation accuracy is within + / - 82 FT.

Elevation tints indicate 985 FT (300 M) intervals.

Changes : Transmission lines.