

INSTRUMENT APPROACH CHART - ICAO

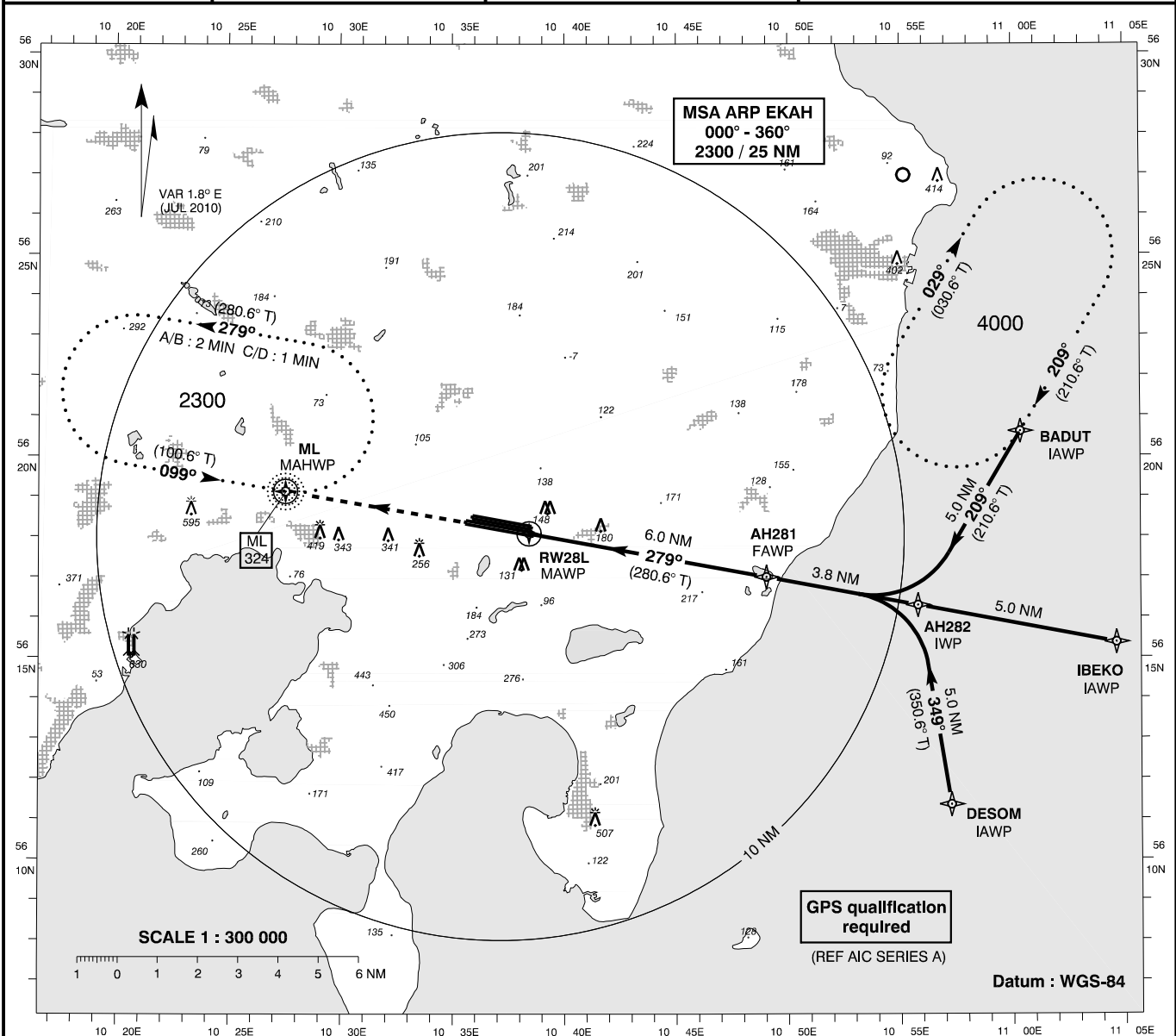
AD ELEV: 82

Bearings are magnetic (true)
ELEV, ALT and HGT in FT

Aarhus APP : 119.275

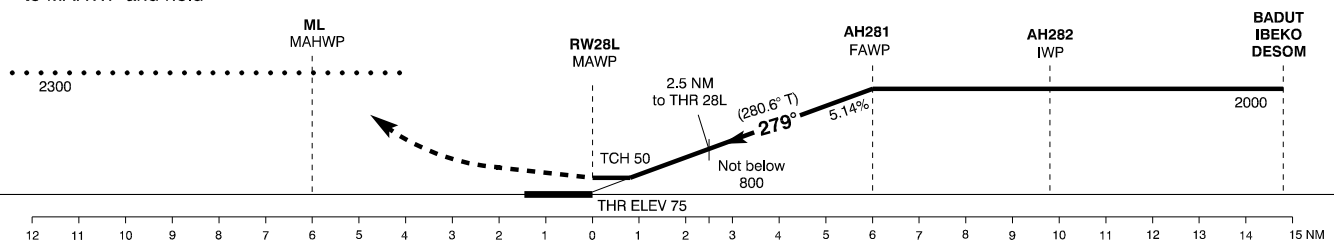
Aarhus TWR : 118.525

AD 2 - EKAH
RNAV (GPS) 28L - 1
Aarhus



TA 3000

Missed Approach :
Climb to 2300
to MAHWP and hold



Changes : VAR, OBST 507 FT added.

| OCA (H) | A | B | C | D | SPECIAL CONDITIONS | | | | | | | | | | |
|--------------------------------------|-----------|-----------|-----------|-----------|--------------------|--------|--------|--------|--|-----|-----|------|------|------|------|
| GPS | 480 (400) | 480 (400) | 480 (400) | 480 (400) | | | | | | | | | | | |
| Circling | 520 (440) | 580 (500) | 820 (740) | 820 (740) | | | | | | | | | | | |
| Time to MAWP from FAWP - DIST 6.0 NM | | | | | DIST to THR | | 1 | 2 | 3 | 4 | 5 | 6 | | | |
| GS (KT) | 60 | 80 | 100 | 120 | 140 | 160 | 180 | 200 | NOM ALT | 440 | 750 | 1060 | 1380 | 1690 | 2000 |
| MIN : SEC | 6 : 00 | 4 : 30 | 3 : 36 | 3 : 00 | 2 : 34 | 2 : 15 | 2 : 00 | 1 : 48 | Pass 2.5 NM before RW28L at MNM 800 | | | | | | |
| ROD FT / MIN | 312 | 416 | 520 | 625 | 729 | 833 | 937 | 1041 | NOTE : Timing not authorized for defining MAWP | | | | | | |