

**INSTRUMENT APPROACH CHART - ICAO**

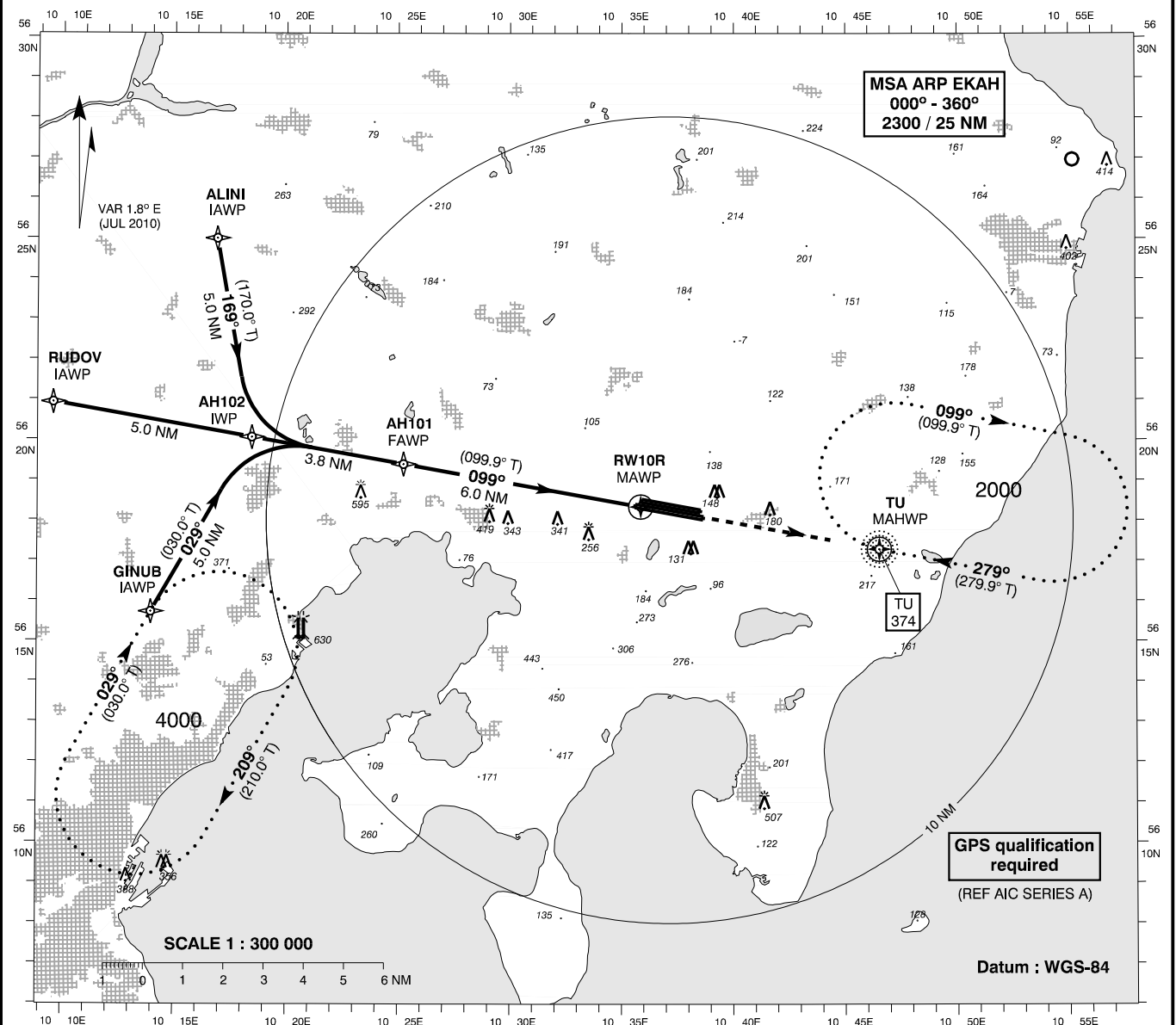
AD ELEV : 82

Bearings are magnetic (true)  
ELEV, ALT and HGT in FT

Aarhus APP : 119.275

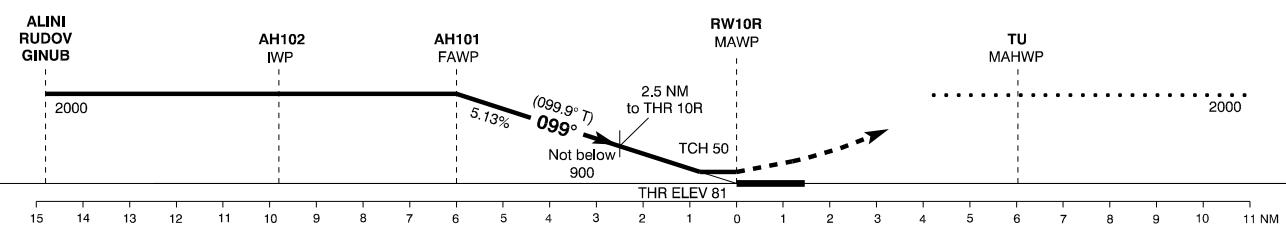
Aarhus TWR : 118.525

**AD 2 - EKAH**  
**RNAV (GPS) 10R - 1**  
**Aarhus**



**TA 3000**

Missed Approach:  
Climb to 2000  
to MAHWP TU and hold



Changes : VAR, OBST 507 FT added.

OCA (H)	A	B	C	D	SPECIAL CONDITIONS										
GPS	480 (400)	480 (400)	480 (400)	480 (400)											
Circling	520 (440)	580 (500)	820 (740)	820 (740)											
Time to MAWP from FAWP - DIST 6.0 NM					DIST to THR	1	2	3	4	5	6				
GS (KT)	60	80	100	120	140	160	180	200	NOM ALT	440	750	1070	1380	1690	2000
MIN : SEC	6 : 00	4 : 30	3 : 36	3 : 00	2 : 34	2 : 15	2 : 00	1 : 48	Pass 2.5 NM before RW10R at MNM 900						
ROD FT / MIN	312	416	520	623	727	831	935	1039	NOTE : Timing not authorized for defining MAWP						