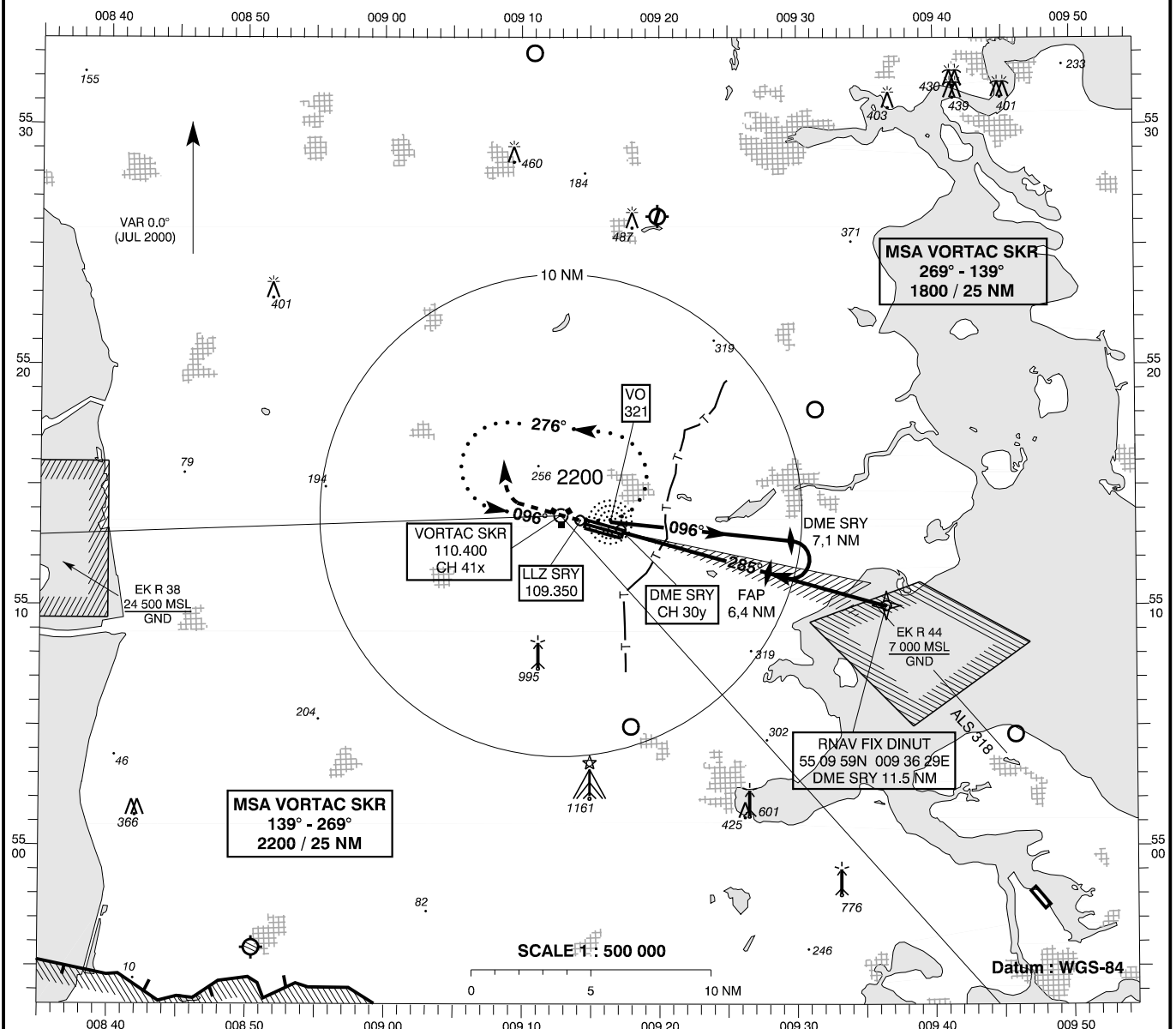


**INSTRUMENT
APPROACH
CHART - ICAO**

AD ELEV : 141
Bearings are magnetic
ELEV, ALT and HGT in FT

Skrydstrup APP : 127.475 300.075
Skrydstrup TWR : 128.325 259.875
ATIS : 133.900

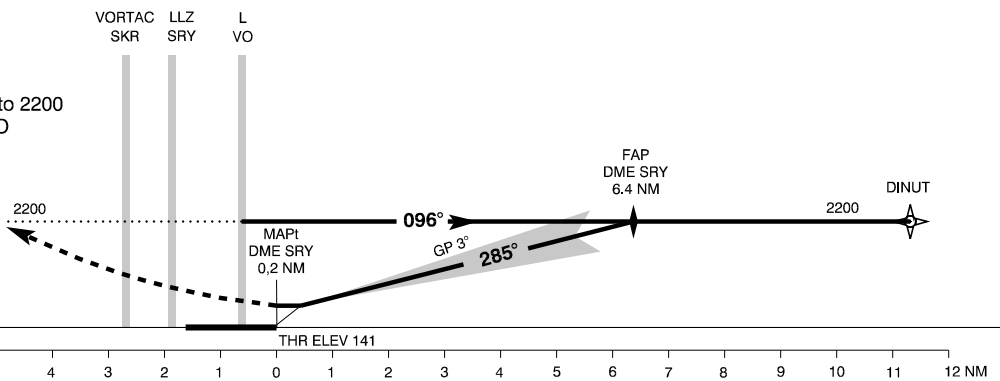
**AD 2 - EKSP
ILS 29R (ACFT CAT A/B)
(MIL AD, PPR)
Vojens / Skrydstrup**



TA 3000

RDH 41

Missed Approach :
Climb straight ahead to 2200
and join HLDG at L VO



OCA (H)

ILS CAT I

GP INOP *

Circling

DME SRY	1	2	3	4	5	6
DIST TO THR	0.8	1.8	2.8	3.8	4.8	5.8
Nominal ALT	440	760	1070	1390	1710	2030

SPECIAL CONDITIONS

Changes : ATIS FREQ added.