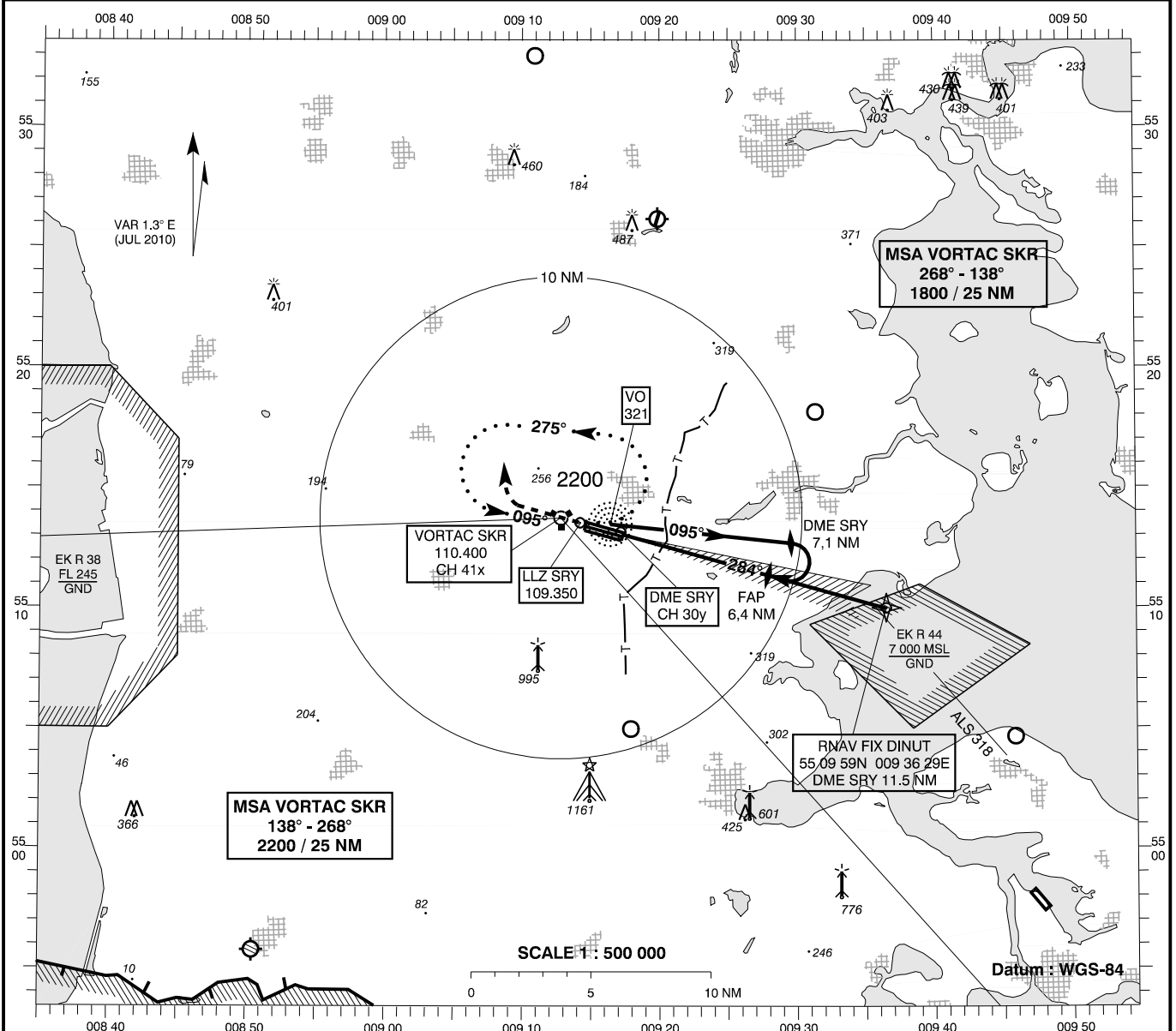


INSTRUMENT APPROACH CHART - ICAO

AD ELEV : 141
 Bearings are magnetic
 ELEV, ALT and HGT in FT

Skrydstrup APP : 127.475 300.075
 Skrydstrup TWR : 128.325 259.875
 ATIS : 133.900

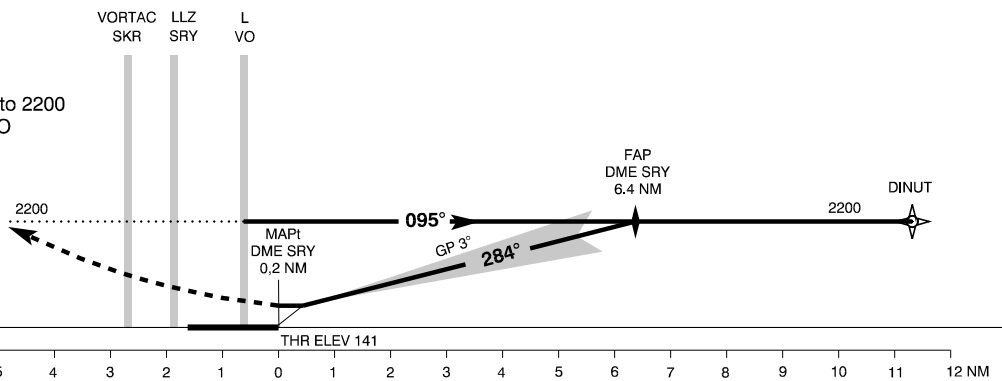
AD 2 - EKSP
ILS 28R (ACFT CAT A/B)
 (MIL AD, PPR)
 Vojens / Skrydstrup



TA 3000

RDH 41

Missed Approach :
 Climb straight ahead to 2200
 and join HLDG at L VO



OCA (H) A B

ILS CAT I 273 (132) 283 (140)

GP INOP * 590 (450) 590 (450)

Circling 640 (500) 640 (500)

SPECIAL CONDITIONS

DME SRY	1	2	3	4	5	6
DIST to THR	0.8	1.8	2.8	3.8	4.8	5.8
Nominal ALT	440	760	1070	1390	1710	2030

Changes : VAR., RWY NR.