

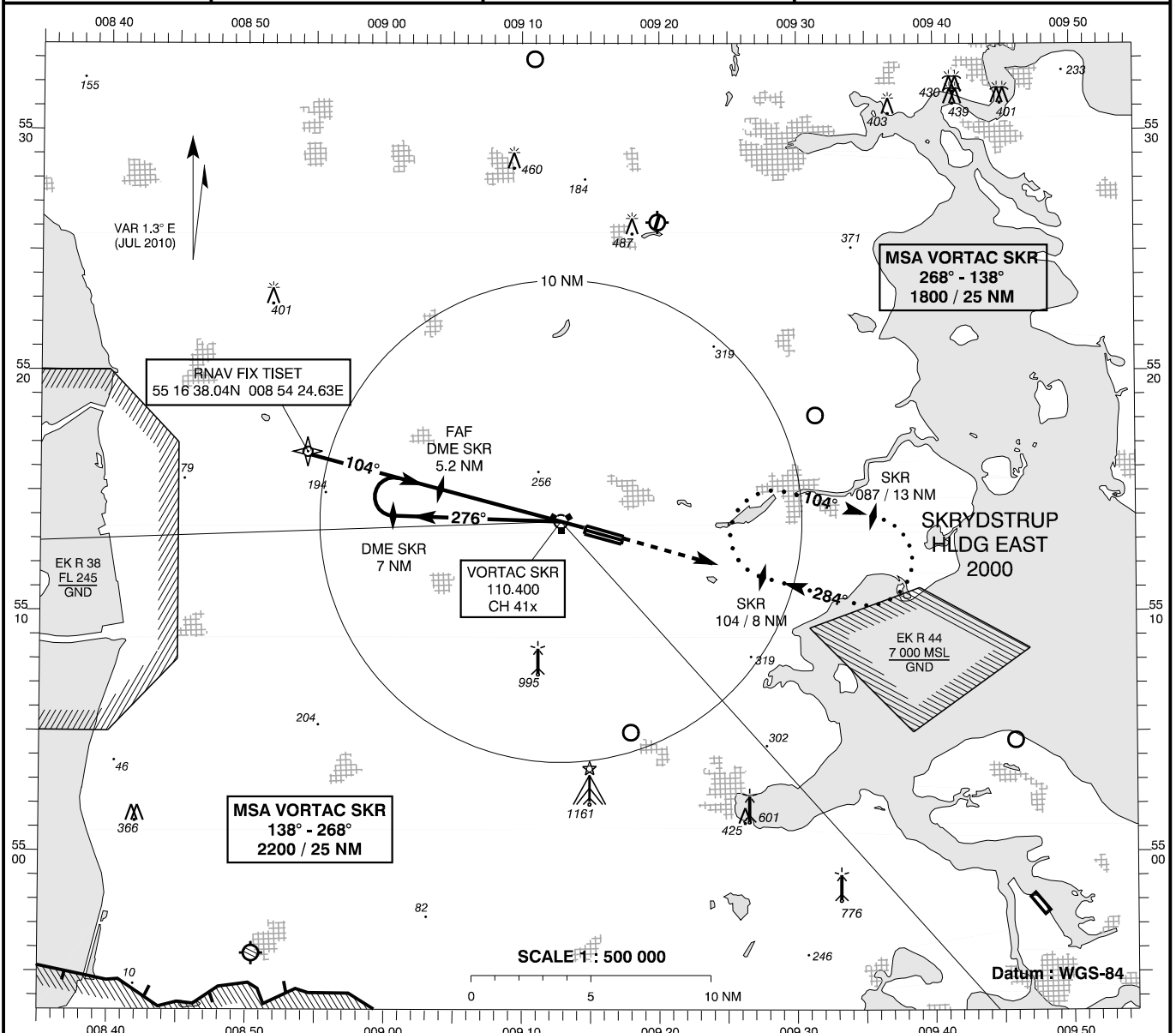
INSTRUMENT APPROACH CHART - ICAO

AD ELEV : 141

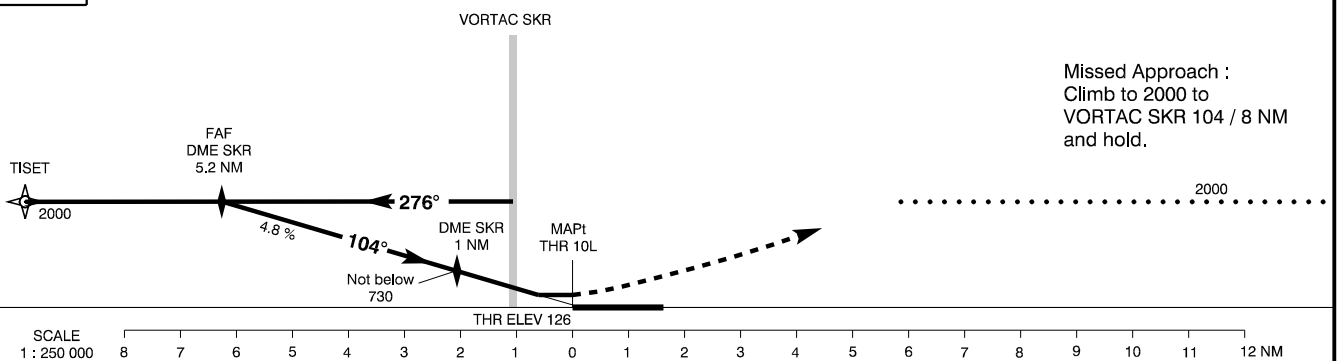
Bearings are magnetic
ELEV, ALT and HGT in FT

Skrydstrup APP : 127.475 300.075
Skrydstrup TWR : 128.325 259.875
Skrydstrup GCA : 119.900 359.275
ATIS : 133.900

AD 2 - EKSP
VORTAC 10L
(ACFT CAT A / B)
Vojens / Skrydstrup (MIL AD, PPR)



TA 3000



Missed Approach :
Climb to 2000 to
VORTAC SKR 104 / 8 NM
and hold.

OCA (H)	A	B	SPECIAL CONDITIONS									
VORTAC	540 (410)	540 (410)										
SRA (Slope 2.75°)	760 (640)	760 (640)										
Circling	830 (690)	870 (730)										
VORTAC : Time to MAPt from FAF - DIST 6.26 NM												
GS (KT)	60	80	100	120	140	DME SKR	5	4	3	2	1	0
MIN : SEC	6 : 16	4 : 42	3 : 45	3 : 08	2 : 41	DIST to THR	6.1	5.1	4.1	3.1	2.1	1.1
ROD FT / MIN	292	389	486	583	680	Nominal ALT	1945	1650	1360	1070	775	485

Changes : VAR., RWY NR.