

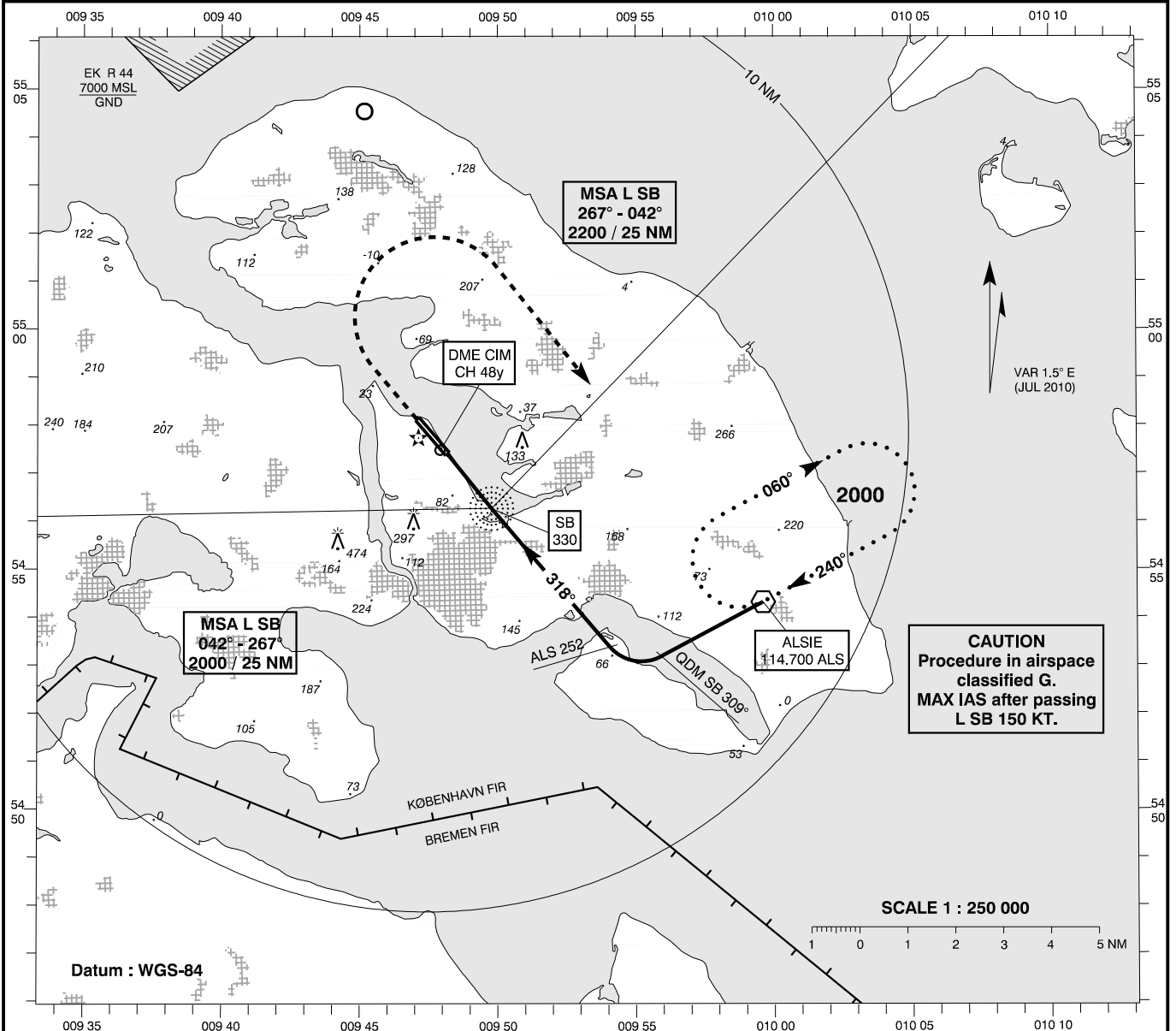
**INSTRUMENT
APPROACH
CHART - ICAO**

AD ELEV : 24

Bearings are magnetic
ELEV, ALT and HGT in FT

Sønderborg AFIS : 126.400

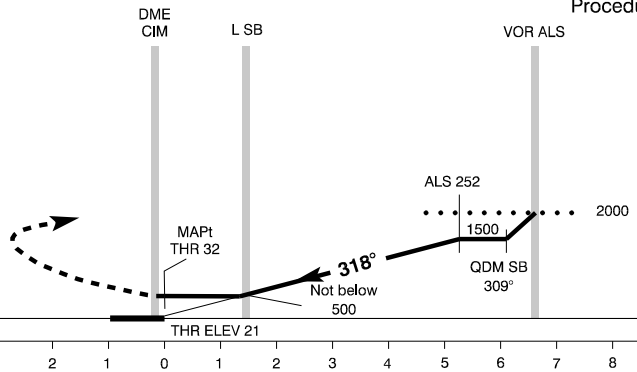
**AD 2 - EKSB
NDB 32
Sønderborg**



TA 3000

Procedure valid for speeds up to IAS 180 KT

Missed Approach :
Climb on track 318° to 1000.
Turn right, climb to 2000 and
hold at VOR ALS.



OCA(H)	A	B	C	SPECIAL CONDITIONS
NDB	420 (400)	420 (400)	420 (400)	
Circling *	430 (410)	700 (680)	930 (910)	* E of AD only

Time to THR 32 from L SB - DIST 1.46 NM							DME CIM	NM	2	3	4	5
GS (KT)	60 KT	80 KT	100 KT	120 KT	140 KT	160 KT	DIST to THR	NM	1.8	2.8	3.8	4.8
MIN : SEC	1 : 28	1 : 06	0 : 53	0 : 44	0 : 38	0 : 33	Nominal ALT		670	1000	1330	1660
ROD FT / MIN	328	437	547	656	766	875						

Changes : VAR.