

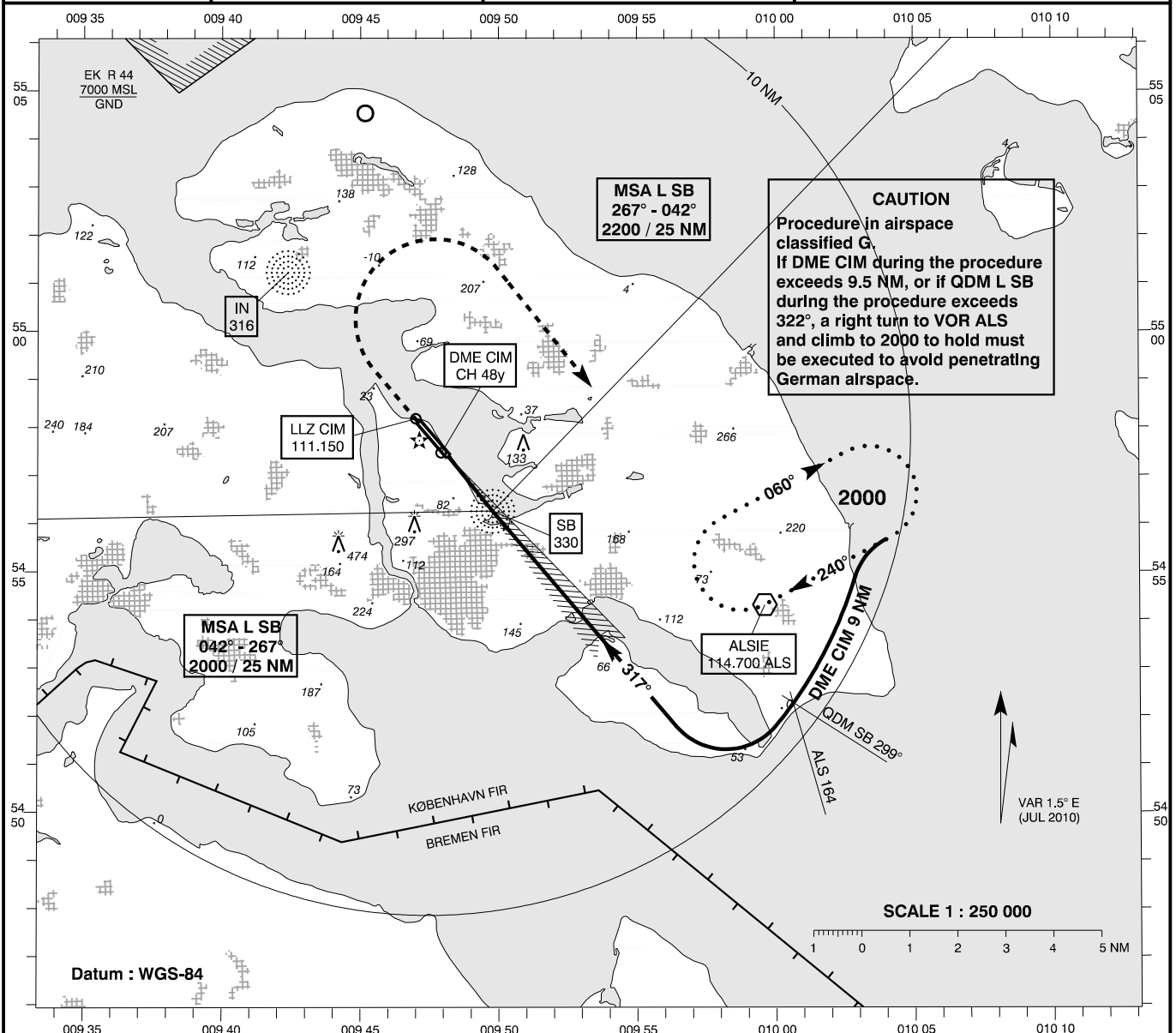
INSTRUMENT APPROACH CHART - ICAO

AD ELEV : 24

Bearings are magnetic
ELEV, ALT and HGT in FT

Sønderborg AFIS : 126.400

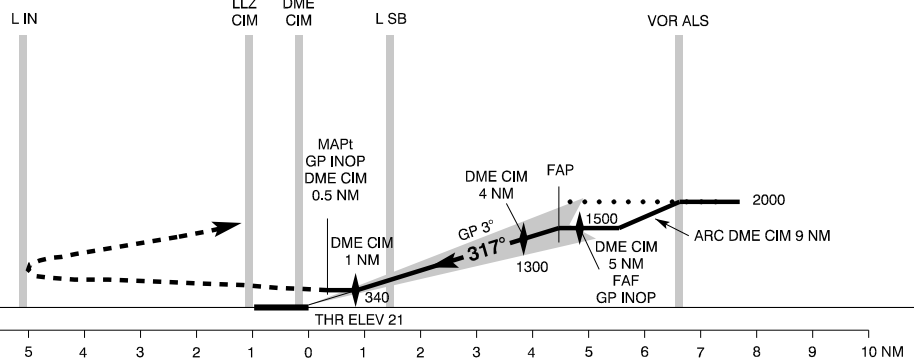
**AD 2 - EKSB
ILS / DME 32
(ACFT CAT C + D)
Sønderborg**



TA 3000
RDH 52

APCH speed MAX IAS 170 KT

Missed Approach :
Climb straight ahead until MNM 500.
Then right turn climbing to
2000 FT to VOR ALS.



Changes : Missed Approach.

OCA(H)	C	D	SPECIAL CONDITIONS								
ILS / DME	233 (212)	243 (222)									
GP INOP *	330 (310)	330 (310)	* Pass DME CIM 1.5 NM or L SB not below 430								
Circling **	930 (910)	930 (910)	** E of AD only								
Time to THR 32 from L SB - DIST 1.46 NM			DME CIM	NM	1	2	3	4			
GS (KT)	100	120	140	160	180	DIST to THR	NM	0.8	1.8	2.8	3.8
MIN : SEC	0 : 53	0 : 44	0 : 38	0 : 33	0 : 29	Nominal ALT		340	660	980	1300
ROD FT / MIN	547	656	766	875	955						