

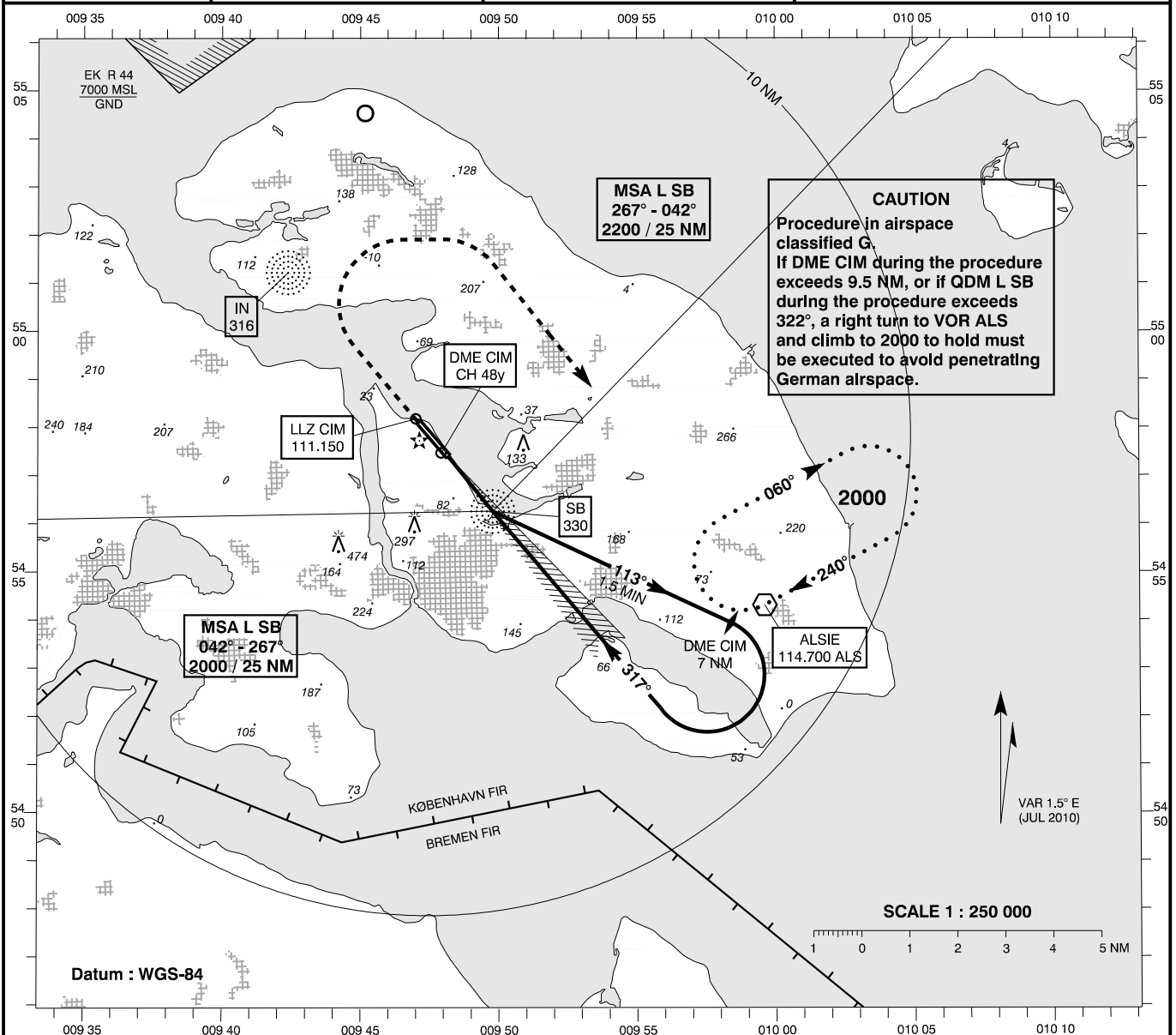
**INSTRUMENT APPROACH CHART - ICAO**

AD ELEV : 24

Bearings are magnetic  
ELEV, ALT and HGT in FT

Sønderborg AFIS : 126.400

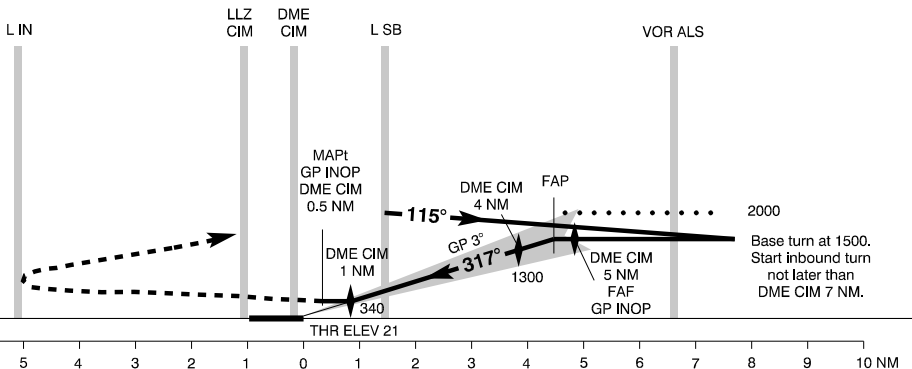
**AD 2 - EKSB  
ILS / DME 32-2  
(ACFT CAT A + B)  
Sønderborg**



**TA 3000**

**RDH 52**

Missed Approach :  
Climb straight ahead until MNM 500.  
Then right turn climbing to  
2000 FT to VOR ALS.



OCA(H)	A	B	SPECIAL CONDITIONS
ILS / DME	214 (193)	224 (203)	
GP INOP *	330 (310)	330 (310)	* Pass DME CIM 1.5 NM or L SB not below 430
Circling **	430 (410)	700 (680)	** E of AD only

Time to THR 32 from L SB - DIST 1.46 NM							DME CIM	NM	1	2	3	4
GS (KT)	60	80	100	120	140	160	DIST to THR	NM	0.8	1.8	2.8	3.8
MIN : SEC	1 : 28	1 : 06	0 : 53	0 : 44	0 : 38	0 : 33	Nominal ALT		340	660	980	1300
ROD FT / MIN	328	437	547	656	766	875						

Changes : Missed Approach.