

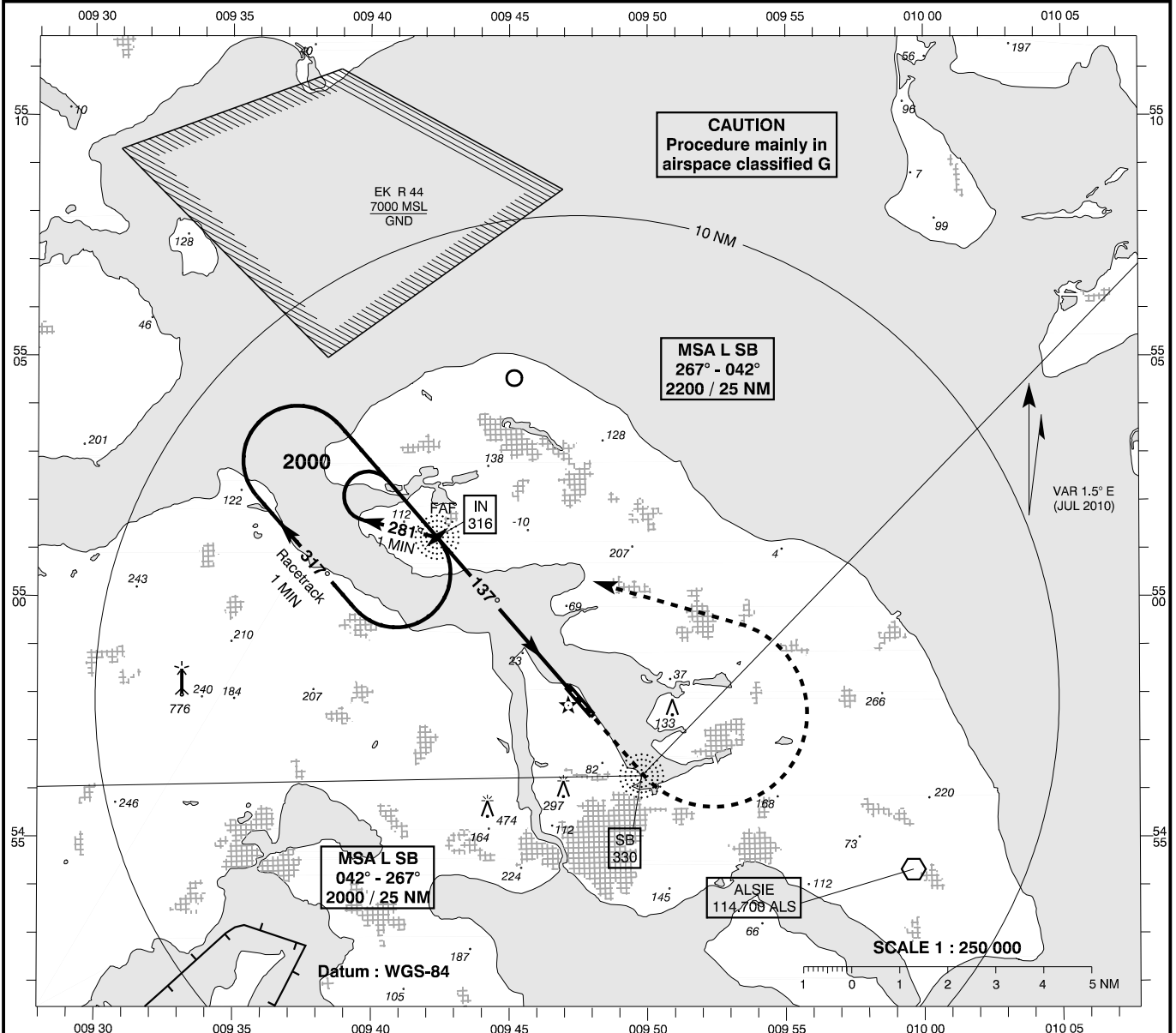
**INSTRUMENT
APPROACH
CHART - ICAO**

AD ELEV : 24

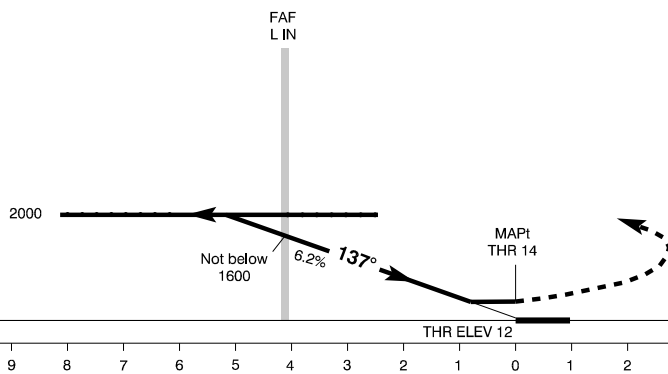
Bearings are magnetic
ELEV, ALT and HGT in FT

Sønderborg AFIS : 126.400

**AD 2 - EKSB
NDB 14
(ACFT CAT A / B)
Sønderborg**



TA 3000



Missed Approach :
Left turn to L IN
climbing to 2000

OCA(H)	A	B	SPECIAL CONDITIONS
--------	---	---	--------------------

NDB *	420 (400)	420 (400)	* Pass L IN not below 1600
-------	-----------	-----------	----------------------------

Circling **	430 (410)	700 (680)	** E of AD only
-------------	-----------	-----------	-----------------

Time to THR 14 from L IN - DIST 4.1 NM

GS (KT)	60 KT	80 KT	100 KT	120 KT	140 KT
MIN : SEC	4 : 06	3 : 05	2 : 28	2 : 03	1 : 46
ROD FT / MIN	377	502	628	753	879

**Track displacement
of APRX 6 - 8°
W-wards may occur
on final APCH to
RWY 14.**

Changes : VAR.