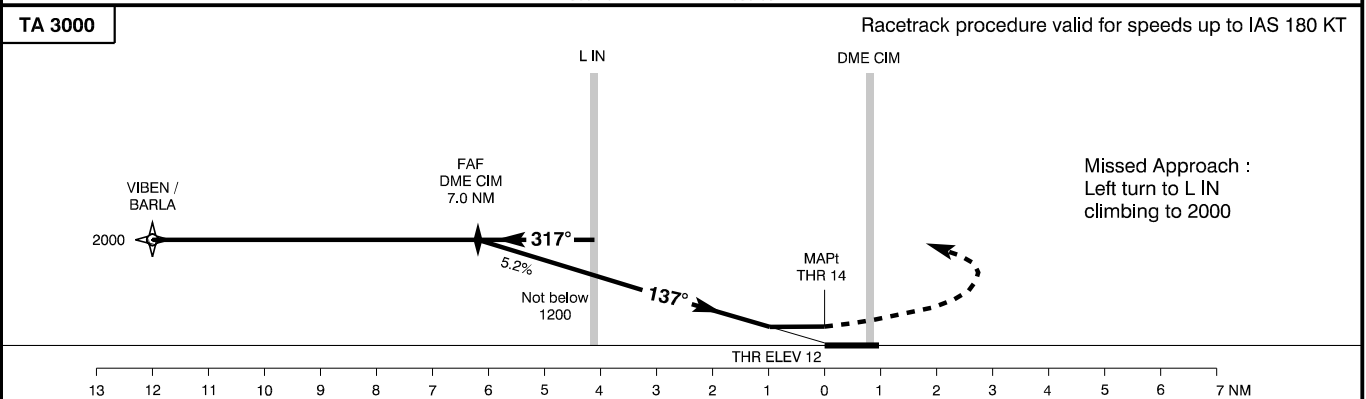
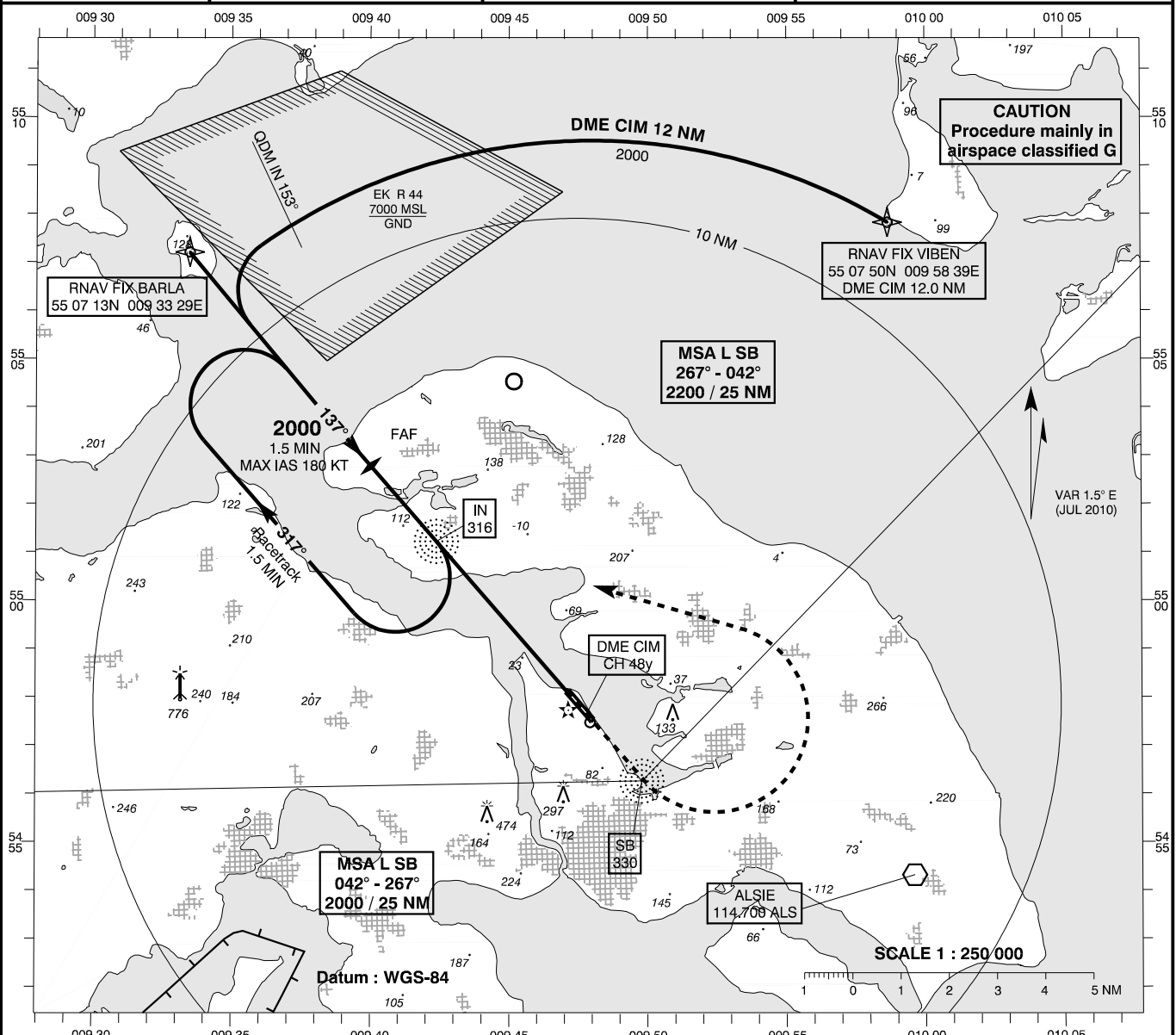


INSTRUMENT APPROACH CHART - ICAO

AD ELEV : 24
 Bearings are magnetic
 ELEV, ALT and HGT in FT

Sønderborg AFIS : 126.400

**AD 2 - EKSB
 NDB + DME 14
 Sønderborg**



OCA(H)	A	B	C	SPECIAL CONDITIONS									
NDB + DME	420 (400)	420 (400)	420 (400)	Track displacement of APRX 6 - 8° W-wards may occur on final APCH to RWY 14.									
Circling *	430 (410)	700 (680)	930 (910)							* E of AD only			
Time to THR 14 from L IN - DIST 4.1 NM				DME CIM	NM	2	3	4	5	6			
GS (KT)	60 KT	80 KT	100 KT	120 KT	140 KT	160 KT	DIST to THR	NM	1.2	2.2	3.2	4.2	5.2
MIN : SEC	4 : 06	3 : 05	2 : 28	2 : 03	1 : 46	1 : 32	ALT		440	750	1070	1390	1700
ROD FT / MIN	316	421	527	632	737	843							

Changes : VAR.