

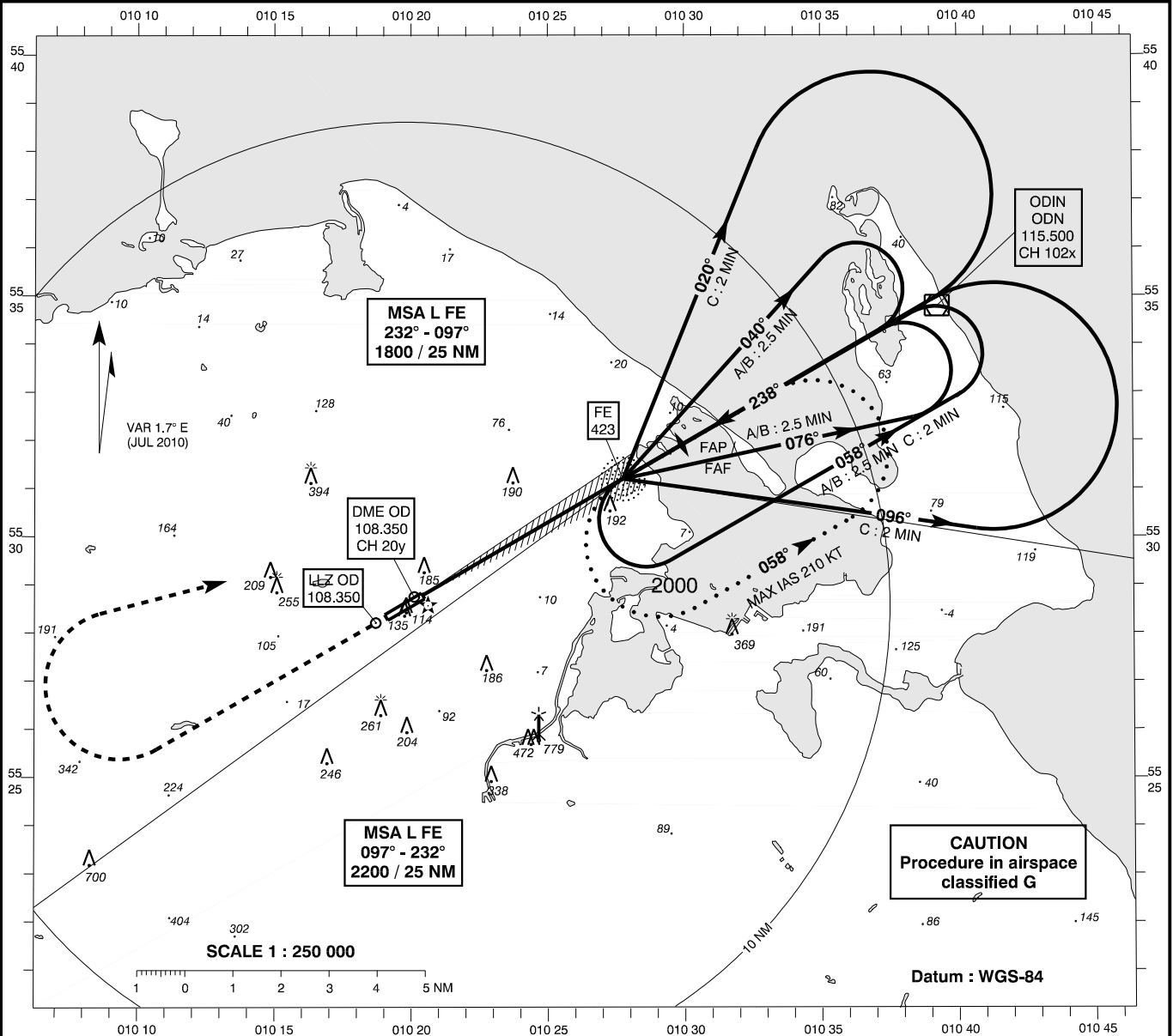
INSTRUMENT APPROACH CHART - ICAO

AD ELEV : 56

Bearings are magnetic
ELEV, ALT and HGT in FT

Odense AFIS : 119.525

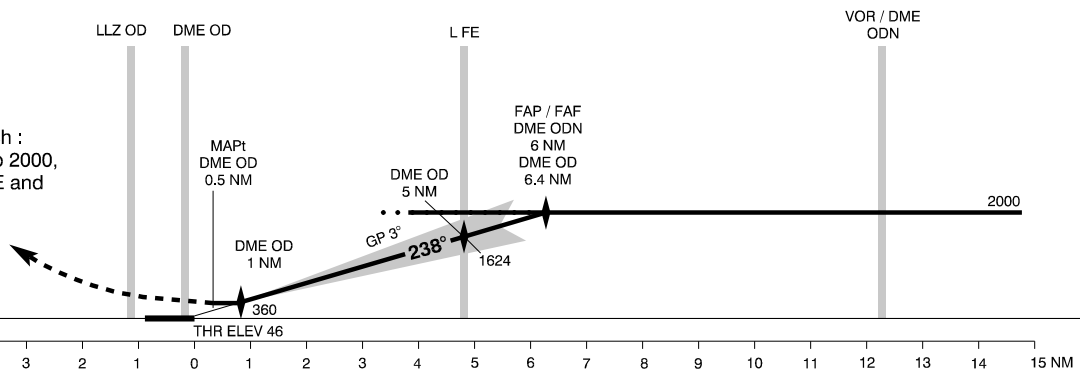
**AD 2 - EKOD
ILS / DME 24
Odense**



TA 3000

RDH 57

Missed Approach :
Climb on 238° to 2000,
turn right to L FE and
hold



OCA (H)	A	B	C	SPECIAL CONDITIONS
ILS / DME	181 (135)	189 (143)	199 (153)	
GP INOP	340 (300)	340 (300)	340 (300)	
Circling *	560 (500)	560 (500)	790 (730)	* North of RWY only

DME OD	NM	1	2	3	4	5	6	7
DIST to THR	NM	0.8	1.8	2.8	3.8	4.8	5.8	6.8
ALT		360	680	1000	1320	1630	1950	2000

Changes : VAR.