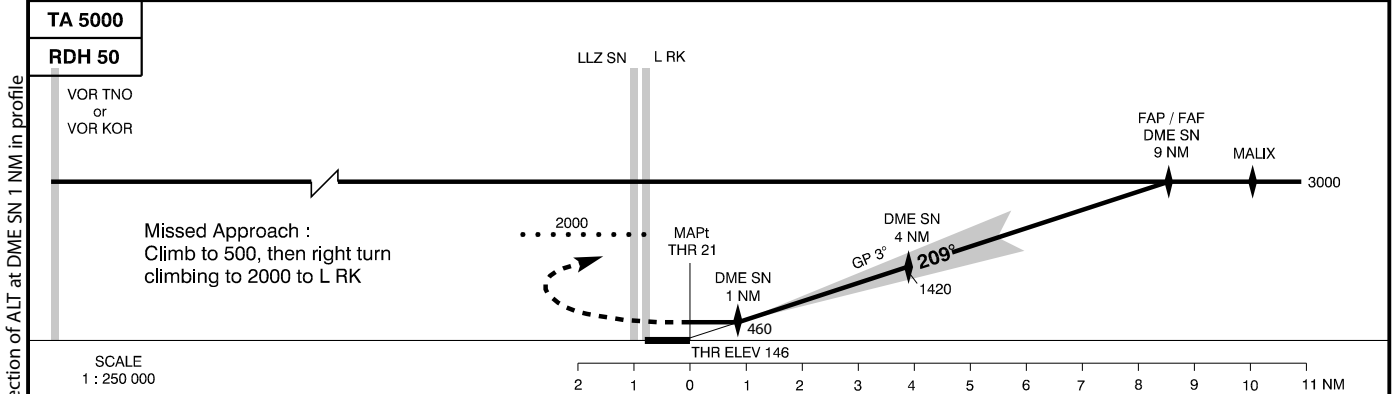
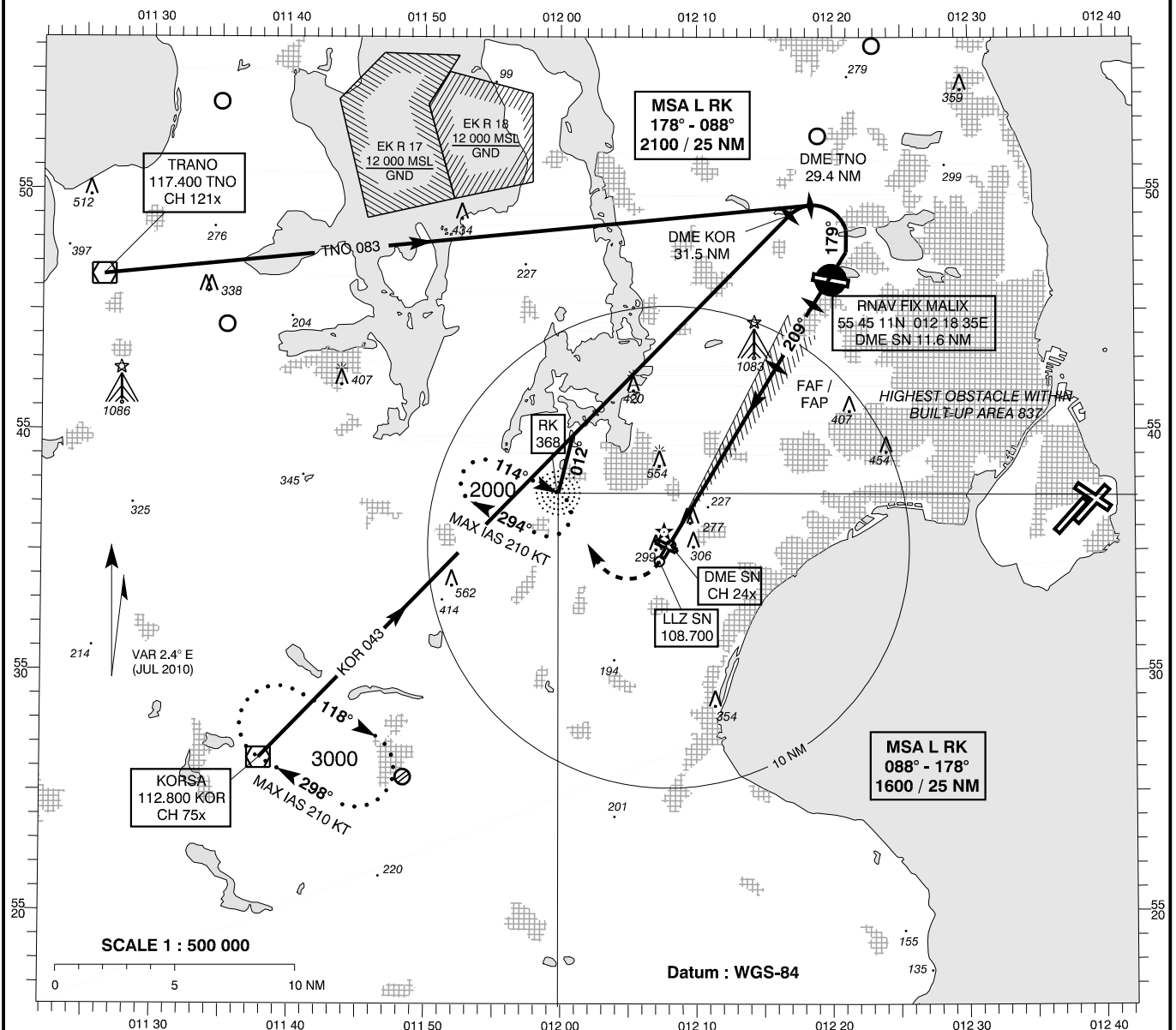


**INSTRUMENT
APPROACH
CHART - ICAO**

AD ELEV : 146
Bearings are magnetic
ELEV, ALT and HGT in FT

Roskilde APP : 125.525
Roskilde TWR : 118.900 119.650
ATIS : 123.800

**AD 2 - EKRK
ILS / DME 21
København / Roskilde**



OCA (H)	A	B	C	D	SPECIAL CONDITIONS					
ILS	300 (154)	308 (162)	317 (171)	327 (181)	* Pass DME SN 4 NM not below 1420					
GP INOP *	525 (380)	525 (380)	525 (380)	525 (380)						
Circling	610 (470)	850 (710)	950 (810)	950 (810)						
DME SN	1	2	3	4	5	6	7	8	9	
DIST to THR	0.8	1.8	2.8	3.8	4.8	5.8	6.8	7.8	8.8	
ALT	460	780	1100	1420	1730	2050	2370	2690	3000	

Changes: Correction of ALT at DME SN 1 NM in profile