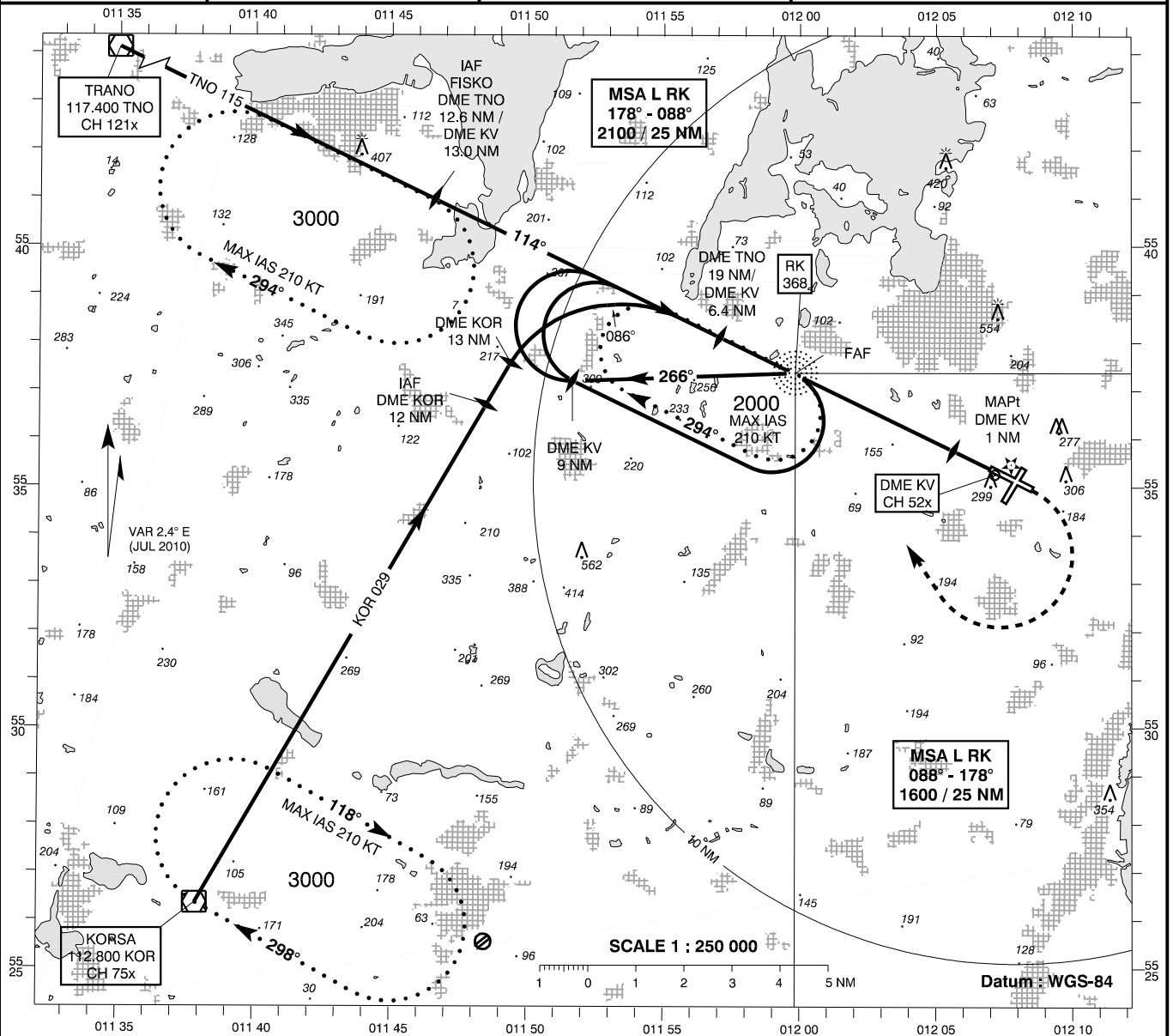


**INSTRUMENT
APPROACH
CHART - ICAO**

AD ELEV : 146
Bearings are magnetic
ELEV, ALT and HGT in FT

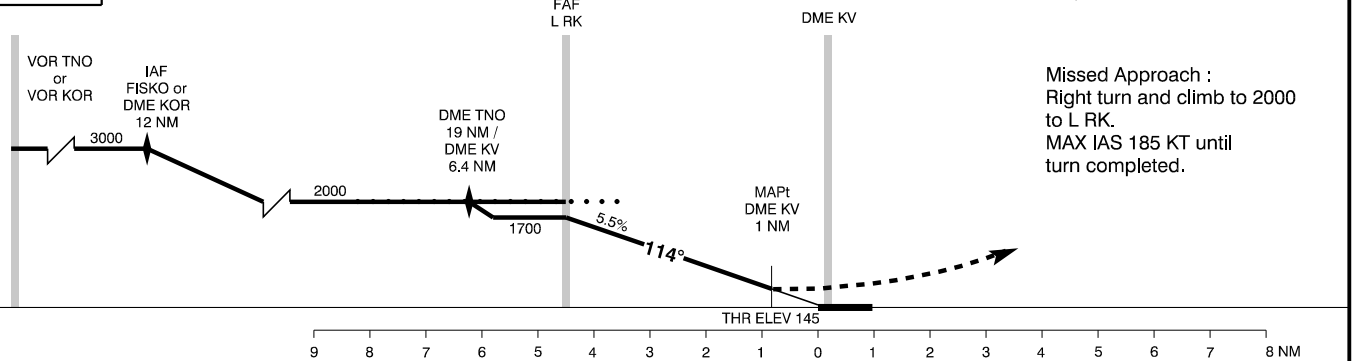
Roskilde APP : 125.525
Roskilde TWR : 118.900 119.650
ATIS : 123.800

**AD 2 - EKRK
NDB + DME 11
(ACFT CAT C + D)
København / Roskilde**



TA 5000

Base turn and racetrack procedures MAX IAS 210 KT



Changes : Procedure renamed.

OCA (H)	C	D	SPECIAL CONDITIONS		
NDB + DME	740 (600)	740 (600)			
Circling	950 (810)	950 (810)			
DME KV	1	2	3	4	5
DIST to THR	0.8	1.8	2.8	3.8	4.8
ALT	470	810	1140	1480	1810