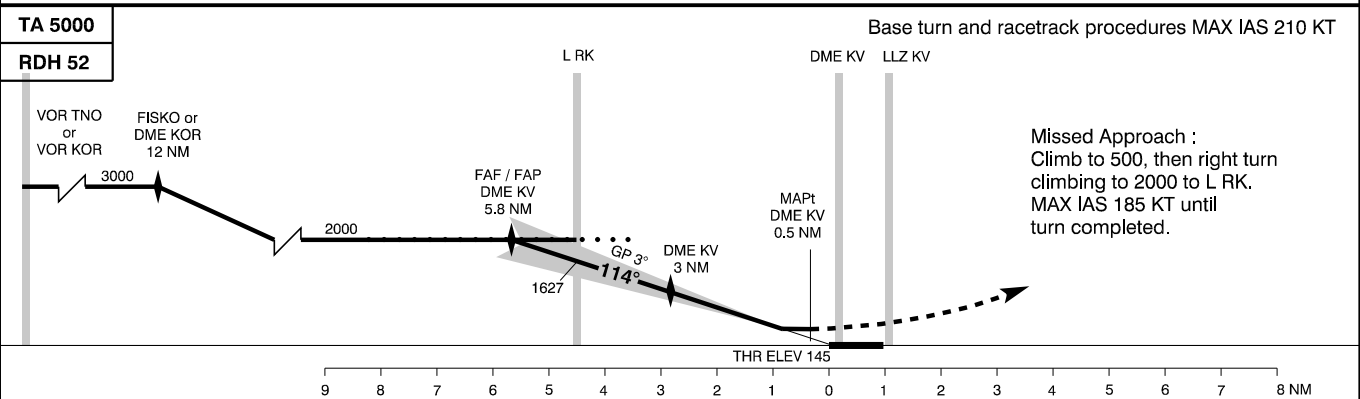
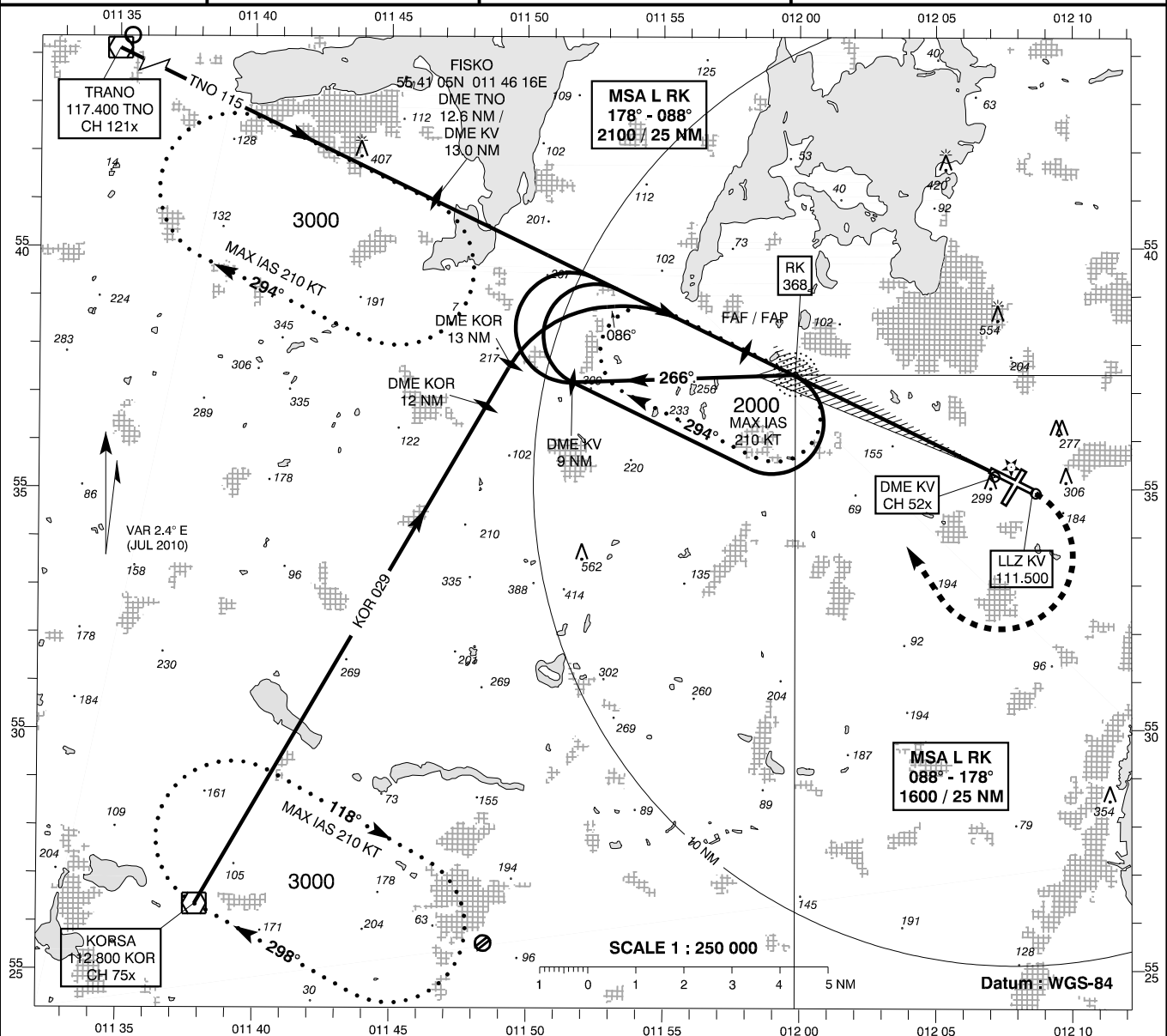


INSTRUMENT APPROACH CHART - ICAO

AD ELEV : 146
Bearings are magnetic
ELEV, ALT and HGT in FT

Roskilde APP : 125.525
Roskilde TWR : 118.900 119.650
ATIS : 123.800

AD 2 - EKRK
ILS / DME 11
(ACFT CAT C + D)
København / Roskilde



TA 5000		Base turn and racetrack procedures MAX IAS 210 KT										
RDH 52												
VOR TNO or VOR KOR		FISCO or DME KOR 12 NM		FAF / FAP DME KV 5.8 NM								
3000		2000		1627								
		GP 3°		DME KV 3 NM								
				MAPT DME KV 0.5 NM								
				THR ELEV 146								
		9 8 7 6 5 4 3 2 1 0 1 2 3 4 5 6 7 8 NM										
OCA (H)		C	C	D	D	SPECIAL CONDITIONS						
ILS / DME		439 (294)	331 (186)*	449 (304)	343 (198)*	* MNM missed approach climb gradient 5.0 %						
GP INOP **		485 (340)		485 (340)		** Pass DME KV 5 NM not below 1500, and DME KV 3 NM not below 740						
Circling		950 (810)		950 (810)								
Time to MAPT from L RK - DIST 4.16 NM						DME KV						
GS (KT)	100	120	140	160	180	200	1	2	3	4	5	
MIN : SEC	2 : 30	2 : 05	1 : 47	1 : 34	1 : 23	1 : 15	DIST to THR	0.8	1.8	2.8	3.8	4.8
ROD FT / MIN	531	637	743	849	955	1061	ALT	458	777	1095	1414	1732
NOTE : Timing not authorized for defining the MAPT.												

Changes : Editorial.