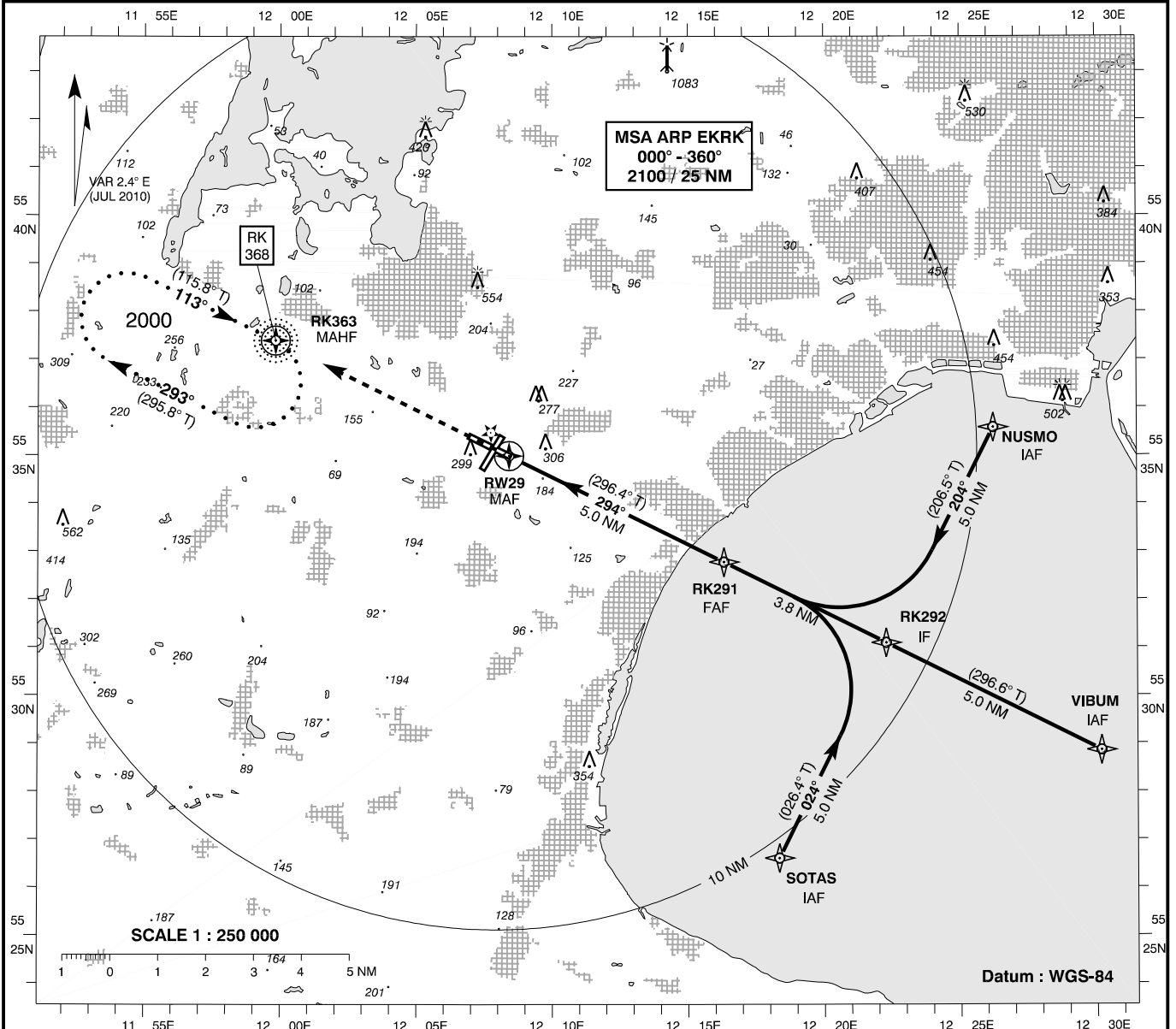


INSTRUMENT APPROACH CHART - ICAO

AD ELEV : 146
 Bearings are magnetic (true)
 ELEV, ALT and HGT in FT

Roskilde APP : 125.525
 Roskilde TWR : 118.900 119.650
 ATIS : 123.800

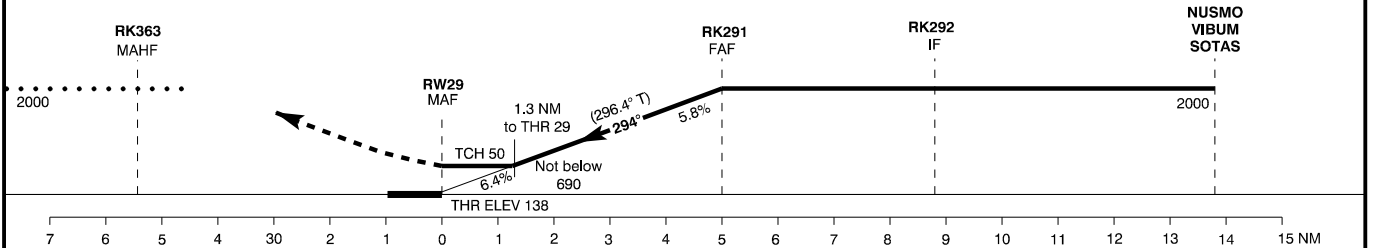
**AD 2 - EKRK
 RNAV 29-1
 København / Roskilde**



TA 5000

Due to the proximity to EKCH, this procedure will normally NOT be available

Missed Approach :
 Climb to 2000 to
 MAHF RK363 and hold.



Changes : Procedure renamed.

| OCA (H) | A | B | C | D | SPECIAL CONDITIONS |
|-------------|-----------|-----------|-----------|-----------|--------------------|
| RNAV | 550 (410) | 550 (410) | 550 (410) | 550 (410) | |
| Circling | 610 (470) | 850 (710) | 950 (810) | 950 (810) | |
| DIST to THR | 1 | 2 | 3 | 4 | 5 |
| NOM ALT | 550 | 910 | 1275 | 1635 | 2000 |

Pass 1.3 NM before RW29 at MNM 690

| RNAV (GPS) 29 via NUSMO | | | | |
|--------------------------------|-----------------|-----------------|------------------|---|
| Waypoint | Function | Latitude | Longitude | Alternate definition |
| NUSMO | IAF | 55 35 34.66N | 012 26 12.99E | KAS 270/6.0 NM, KOR 070/29.0 NM, TNO 106/35.6 NM |
| RK292 | IF | 55 31 05.52N | 012 22 16.35E | |
| RK291 | FAF | 55 32 46.24N | 012 16 18.95E | |
| RW29 | MAF | 55 34 59.03N | 012 08 25.39E | |
| RK | MAHF | 55 37 23.27N | 011 59 49.81E | |

| RNAV (GPS) 29 via VIBUM | | | | |
|--------------------------------|-----------------|-----------------|------------------|---|
| Waypoint | Function | Latitude | Longitude | Alternate definition |
| VIBUM | IAF | 55 28 51.26N | 012 30 10.40E | KAS 208/7.6 NM, KOR 084/29.9 NM, TNO 115/40.2 NM |
| RK292 | IF | 55 31 05.52N | 012 22 16.35E | |
| RK291 | FAF | 55 32 46.24N | 012 16 18.95E | |
| RW29 | MAF | 55 34 59.03N | 012 08 25.39E | |
| RK | MAHF | 55 37 23.27N | 011 59 49.81E | |

| RNAV (GPS) 29 via SOTAS | | | | |
|--------------------------------|-----------------|-----------------|------------------|--|
| Waypoint | Function | Latitude | Longitude | Alternate definition |
| SOTAS | IAF | 55 26 36.24N | 012 18 20.61E | KAS 228/13.7 NM, KOR 088/23.0 NM, TNO 123/35.6 NM |
| RK292 | IF | 55 31 05.52N | 012 22 16.35E | |
| RK291 | FAF | 55 32 46.24N | 012 16 18.95E | |
| RW29 | MAF | 55 34 59.03N | 012 08 25.39E | |
| RK | MAHF | 55 37 23.27N | 011 59 49.81E | |