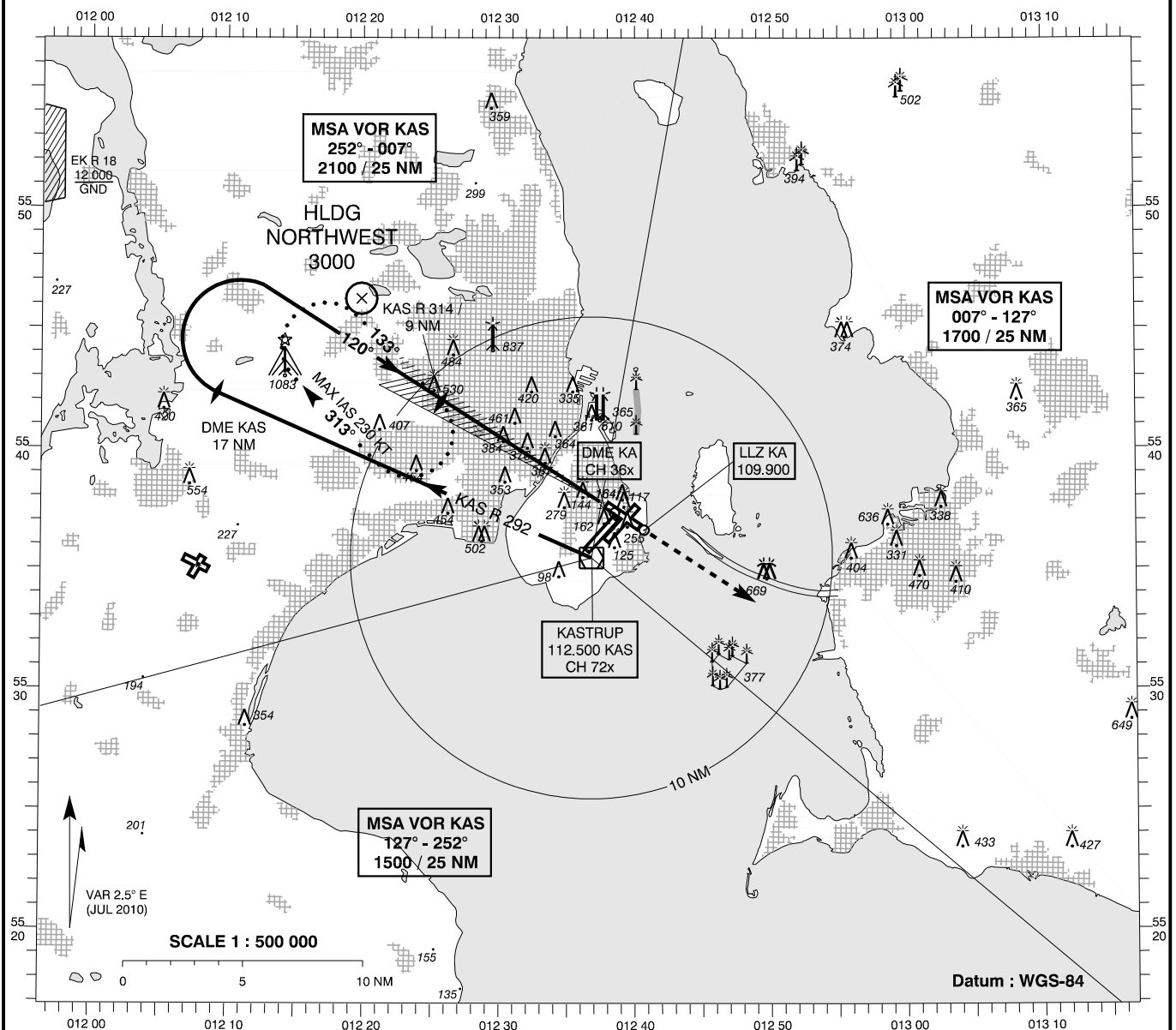


**INSTRUMENT
APPROACH
CHART - ICAO**

AD ELEV : 17
Bearings are magnetic
ELEV, ALT and HGT in FT

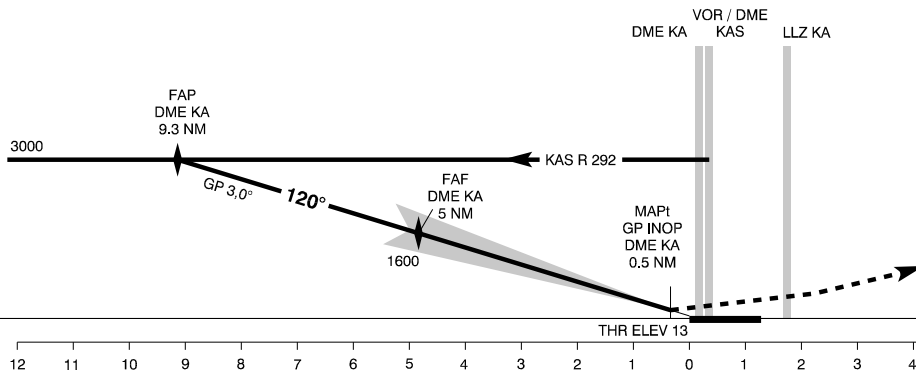
Copenhagen APP : 119.800
Kastrup TWR : 118.100 118.700
ATIS : 122.750

**AD 2 - EKCH
ILS / DME 12
København / Kastrup**



TA 5000

RDH 49



Missed Approach :
Climb straight ahead
to 3000. Inform ATC.

Radio communication failure
during Missed Approach :
Climb to 3000 according to
missed approach procedure.
Maintain 3000 and track
for 3 MIN, then turn left to
KAS VOR / DME for new APCH.

SCALE 1 : 250 000 12 11 10 9 8 7 6 5 4 3 2 1 0 1 2 3 4 5 6 7 8 NM

OCA (H) A B C D SPECIAL CONDITIONS

ILS	208 (195)	220 (207)	228 (215)	239 (226)
GP INOP *	430 (420)	430 (420)	430 (420)	430 (420)
Circling **	550 (540)	580 (570)	780 (770)	780 (770)

* Pass DME KA 2.5 NM not below 650
** Circling for CAT C and D ACFT is not approved
N of AD between centre line RWY 22R and centre line RWY 12

DME KA	NM	1	2	3	4	5	6	7	8	9.3
DIST to THR	NM	0.8	1.8	2.8	3.8	4.8	5.8	6.8	7.8	9.1
ALT		330	650	970	1290	1610	1930	2250	2570	3000

Changes : VAR, Windfarm 377.