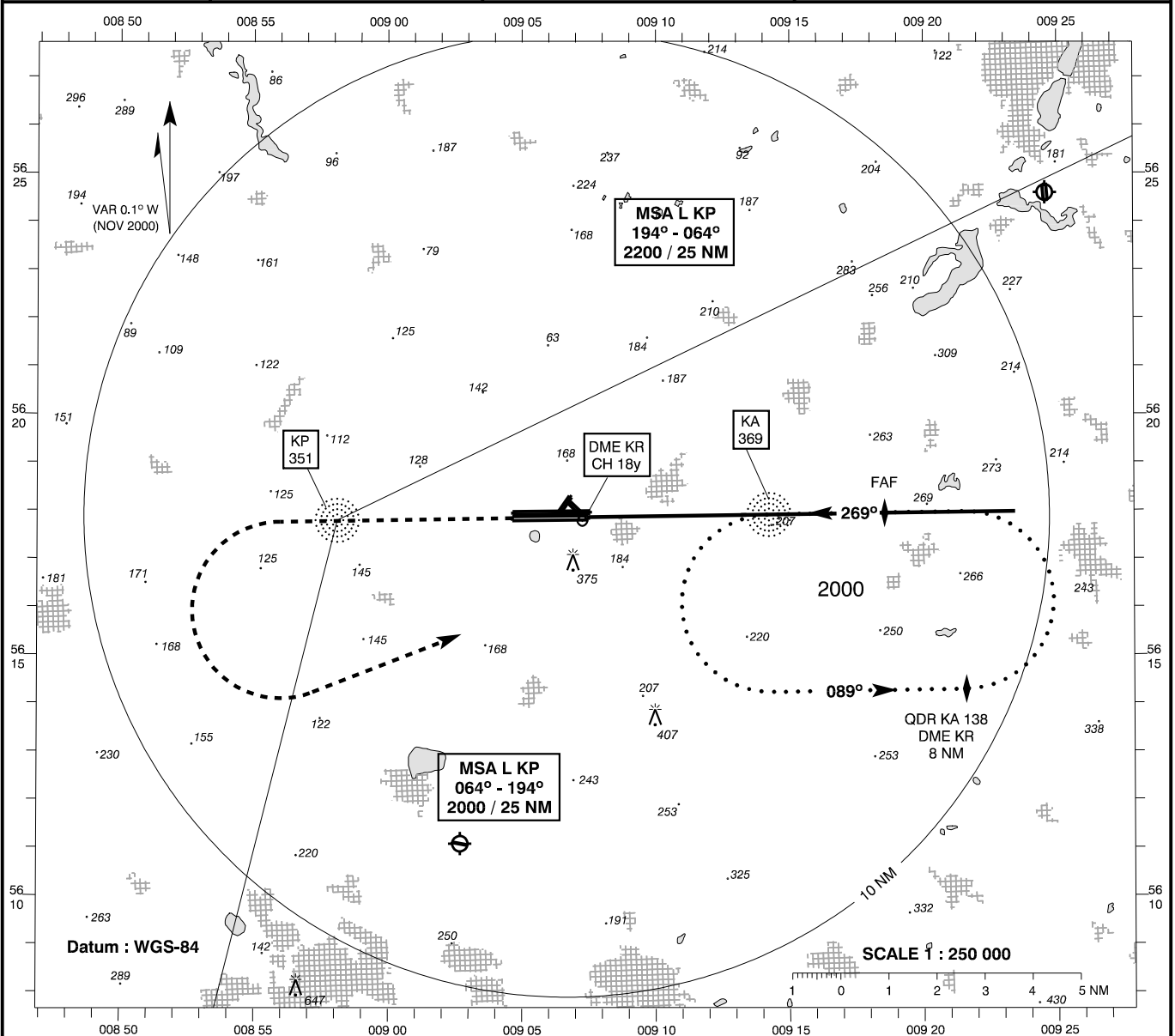


**INSTRUMENT APPROACH CHART - ICAO**

AD ELEV : 170  
Bearings are magnetic  
ELEV, ALT and HGT in FT

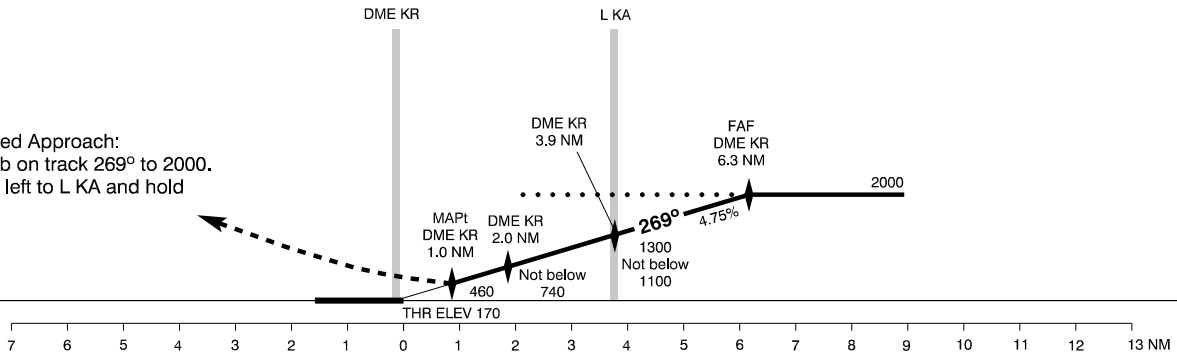
Karup APP : 120.425 292.750  
Karup TWR : 119.575 241.650

**AD 2 - EKKA  
NDB + DME 27L  
(MIL AD, PPR)  
Karup**



**TA 3000**

Missed Approach:  
Climb on track 269° to 2000.  
Turn left to L KA and hold



OCA (H)	A	B	C	D
NDB + DME *	740 (570)	740 (570)	740 (570)	740 (570)
Circling	800 (630)	820 (650)	930 (760)	960 (790)

**SPECIAL CONDITIONS**  
\* Pass L KA / DME KR 3.9 NM not below 1100. Pass DME KR 2.0 NM not below 740.

Time to MAPt from L KA - DIST 2.90 NM									DME KR (NM)							
GS (KT)	60	80	100	120	140	160	180	200	DIST to THR (NM)	0.9	1.9	2.9	3.9	4.9	5.9	6.2
MIN : SEC	2 : 53	2 : 10	1 : 54	1 : 26	1 : 14	1 : 05	0 : 58	0 : 52	ALT	460	760	1050	1340	1630	1920	2000
ROD FT / MIN	289	385	481	577	673	770	866	962	NOTE : Timing not authorized for defining the MAPt							

Changes : Karup TWR UHF FREQ.