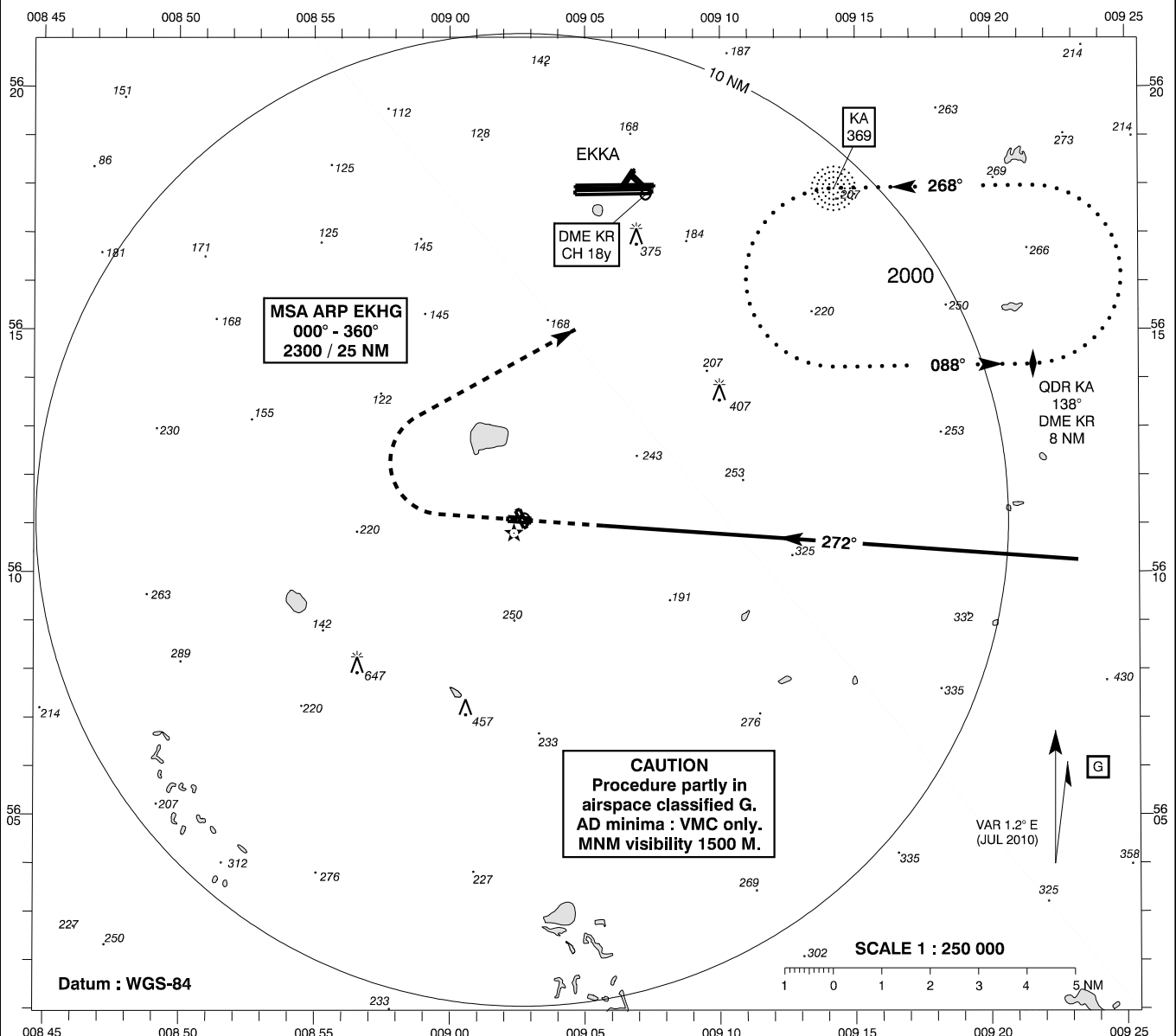


**INSTRUMENT  
APPROACH  
CHART - ICAO**

AD ELEV : 167  
Bearings are magnetic  
ELEV, ALT and HGT in FT

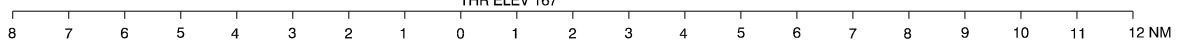
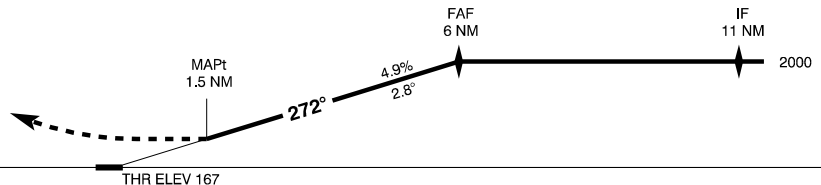
Karup APP : 120.425  
Herring Radio : 121.000

**AD 2 - EKHG  
SRE 27  
Herring**



**TA 3000**

Missed Approach :  
Climb on runway heading  
to 3000, then turn right  
to L KA and hold.



Changes : VAR.

OCA (H)	A	B	C	SPECIAL CONDITIONS	
Straight in	670 (500)	670 (500)	670 (500)	* RWY 09/27 S of AD. RWY 15/33 E of AD	
Circling *	670 (500)	690 (530)	850 (690)		
DIST to THR NM	5	4	3	2	1.5
ALT (HGT)	1700 (1500)	1400 (1200)	1100 (900)	800 (600)	670 (500)

Use of this procedure is subject to  
KARUP ATC capacity.