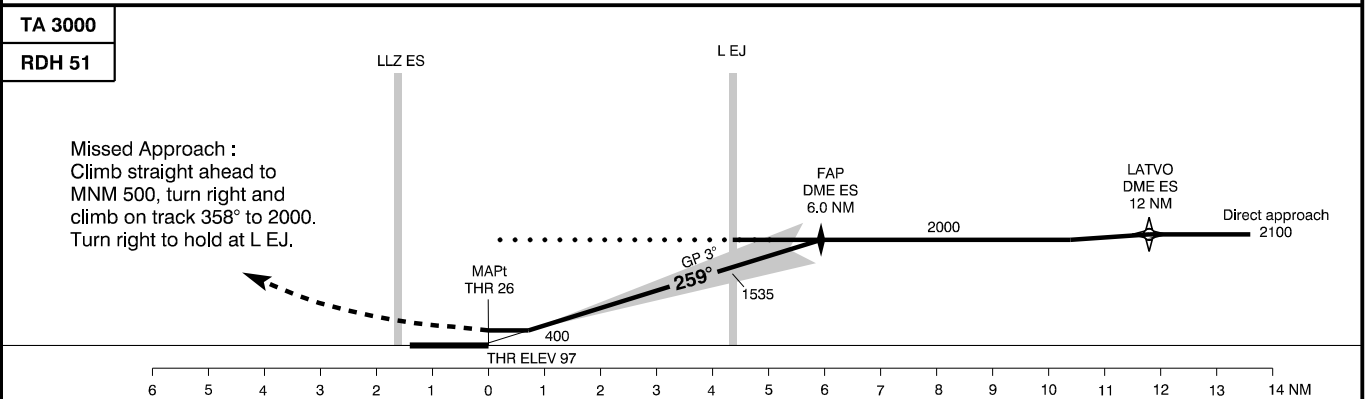
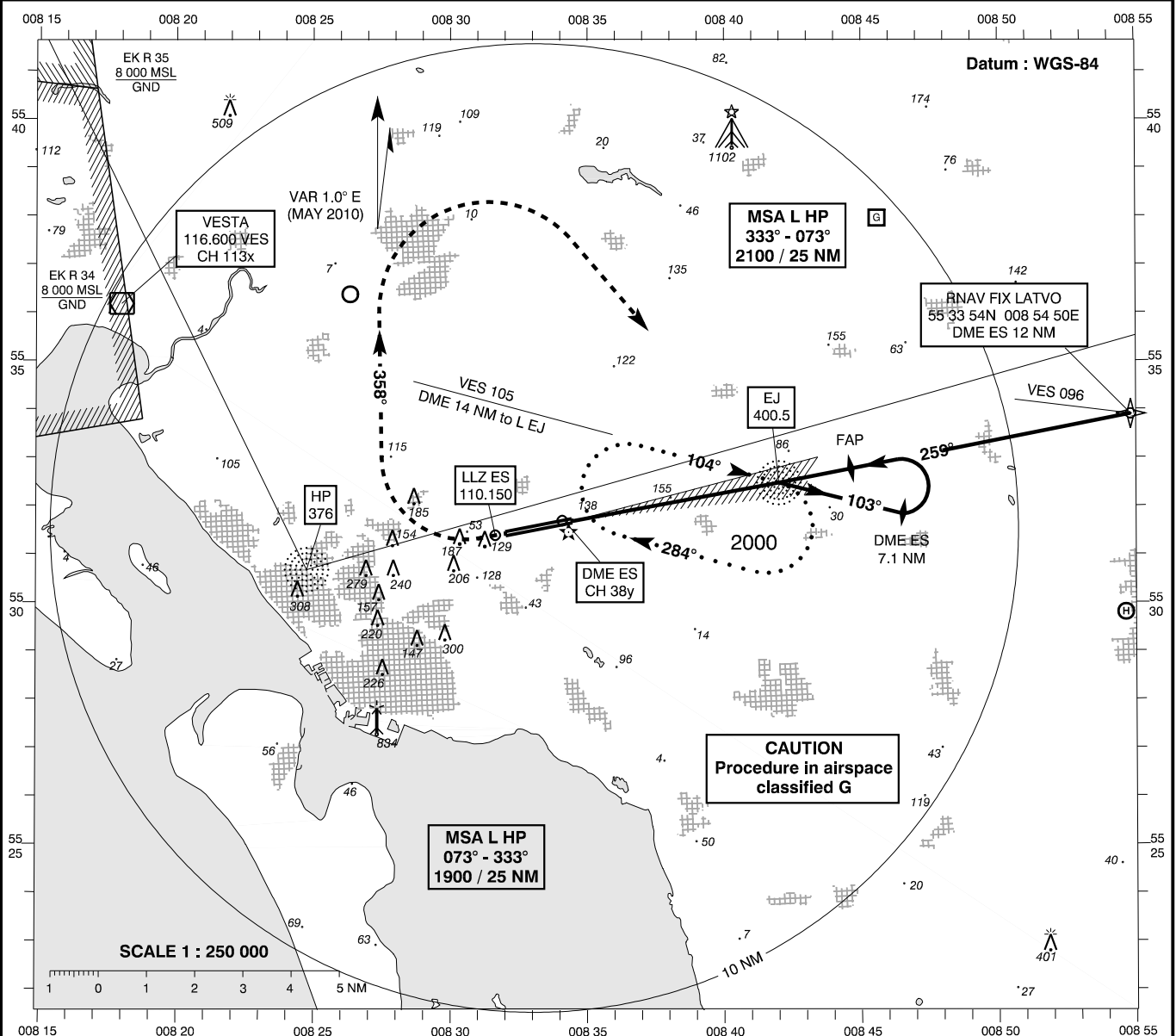


**INSTRUMENT APPROACH CHART - ICAO**

AD ELEV : 97  
 Bearings are magnetic  
 ELEV, ALT and HGT in FT

Billund APP : 127.575  
 Esbjerg AFIS : 120.150

AD 2 - EKEB  
 ILS + DME 26 - ES  
 (ACFT CAT B)  
 Esbjerg



Changes : Outbound track.

TA 3000		RDH 51		LLZ ES		L E J	
OCA (H)	B	SPECIAL CONDITIONS					
ILS	261 (164)	* Pass L E J not below 1500					
GP INOP *	410 (320)						
Circling	600 (510)						
DME ES (NM)	1	2	3	4	5	6	
DIST to THR (NM)	0.8	1.8	2.8	3.8	4.8	5.8	
ALT	410	730	1040	1360	1680	2000	