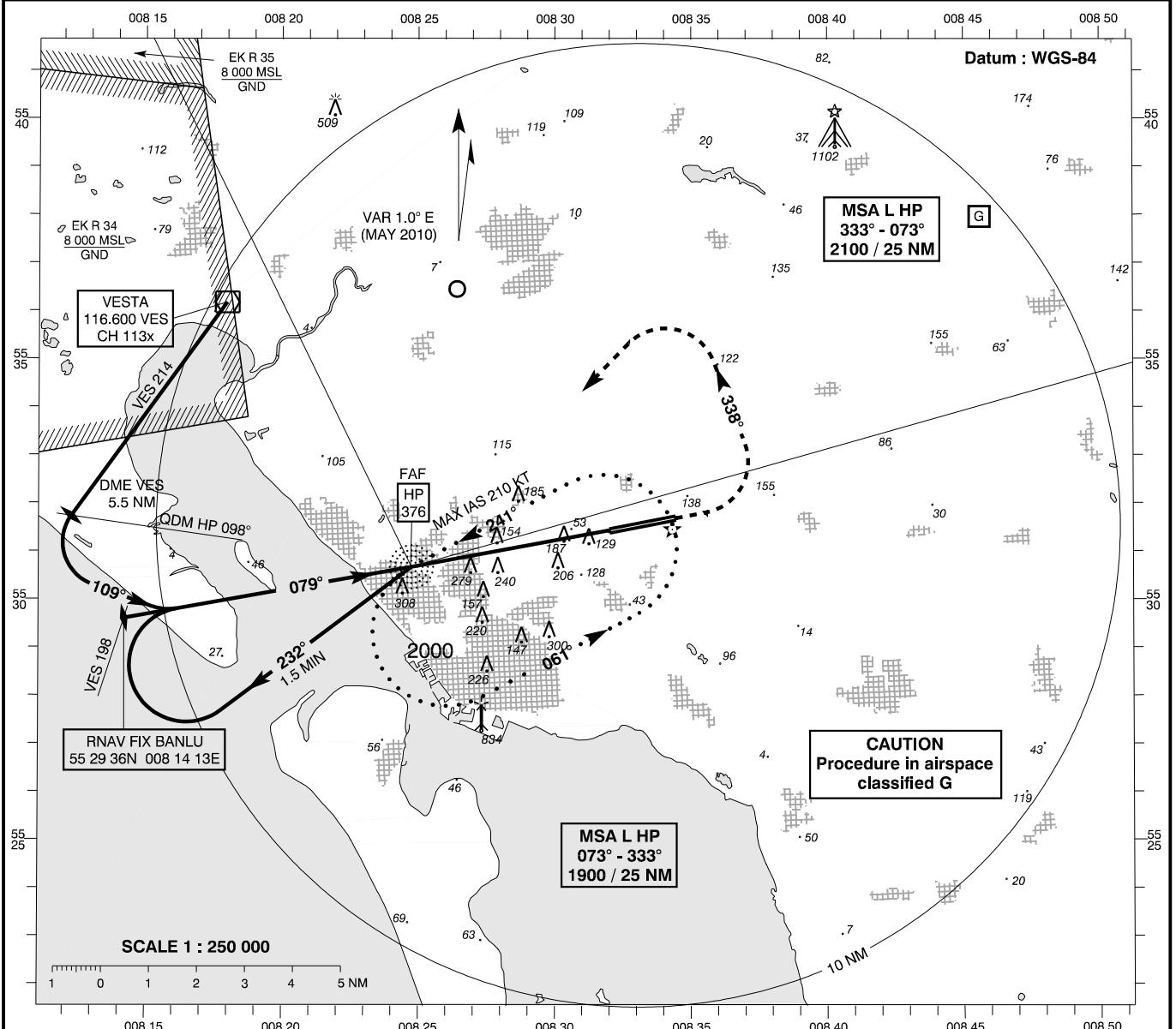


INSTRUMENT APPROACH CHART - ICAO

AD ELEV : 97
 Bearings are magnetic
 ELEV, ALT and HGT in FT

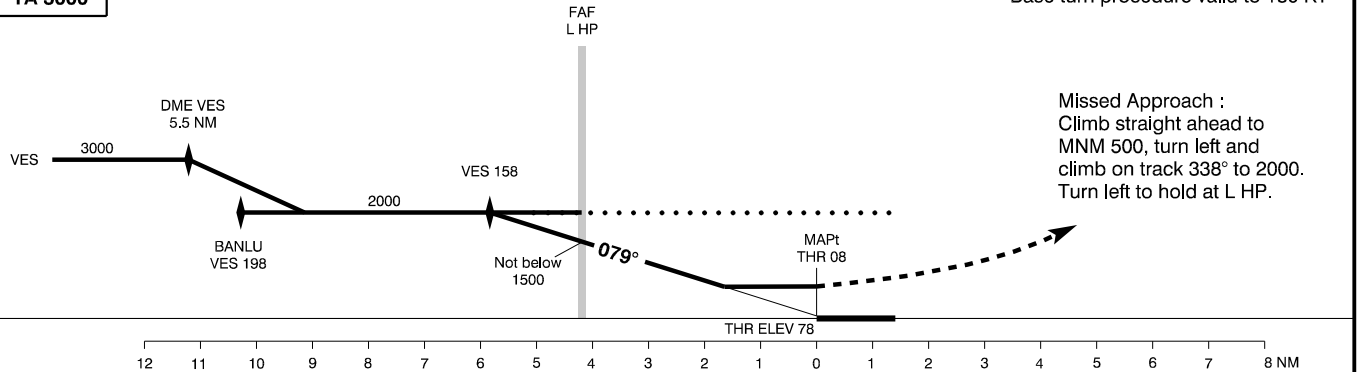
Billund APP : 127.575
 Esbjerg AFIS : 120.150

AD 2 - EKEB
 NDB 08
 (ACFT CAT C / D)
 Esbjerg



TA 3000

Base turn procedure valid to 180 KT



Changes : VDF Deleted.

OCA (H)	C	D	SPECIAL CONDITIONS
NDB *	600 (510)	600 (510)	* Pass L HP not below 1500
Circling	700 (610)	900 (810)**	** N of RWY only
Time to THR 08 from L HP - DIST 4.2 NM			
110 KT	120 KT	130 KT	140 KT
2 : 17	2 : 06	1 : 56	1 : 48
			1 : 40