

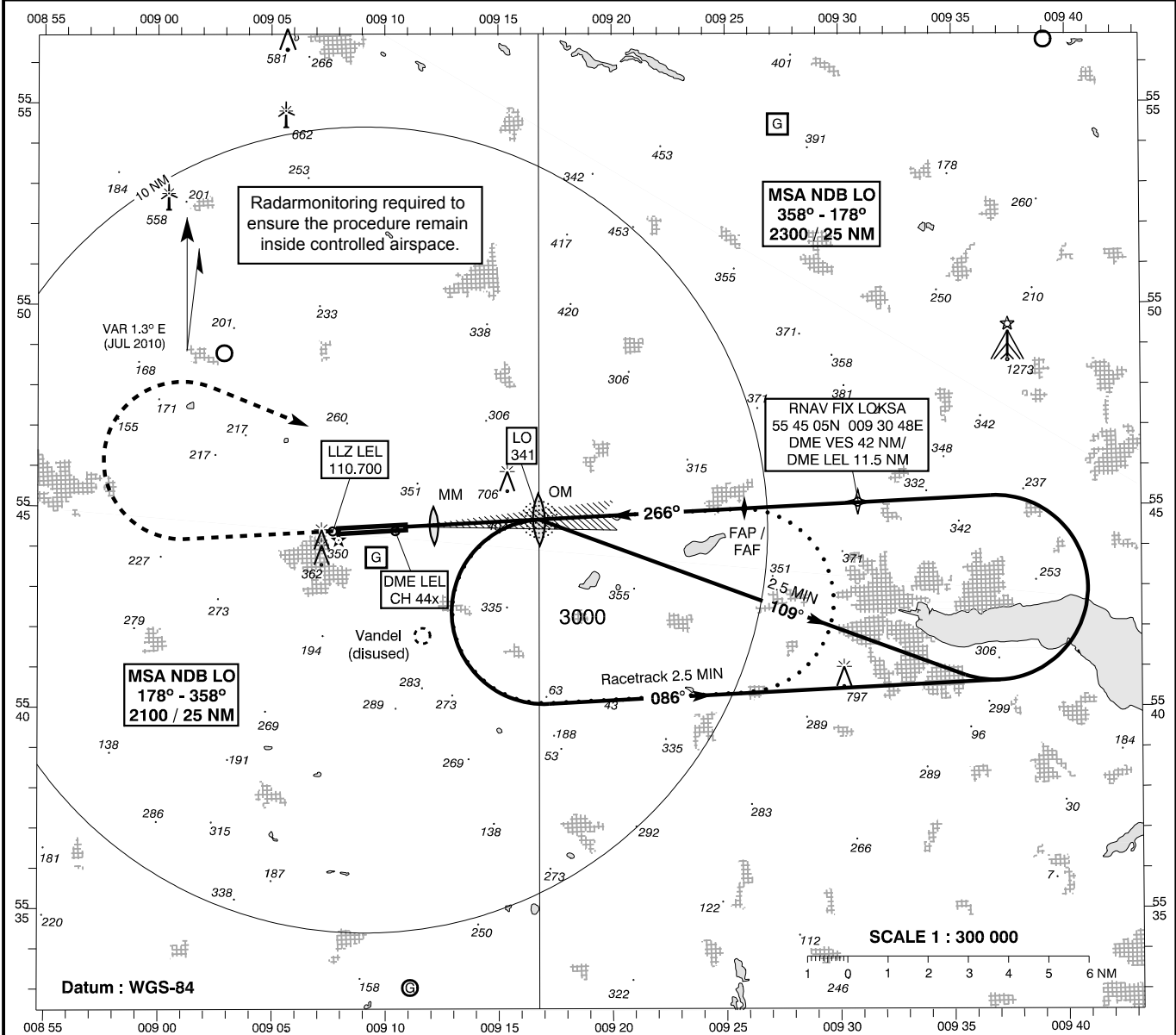
INSTRUMENT APPROACH CHART - ICAO

AD ELEV : 247

Bearings are magnetic
ELEV, ALT and HGT in FT

Billund APP : 127.575
Billund TWR : 119.000
ATIS : 118.775

AD 2 - EKBI
ILS / DME 27 (CAT I + II + III)
(ACFT CAT C / D)
Billund

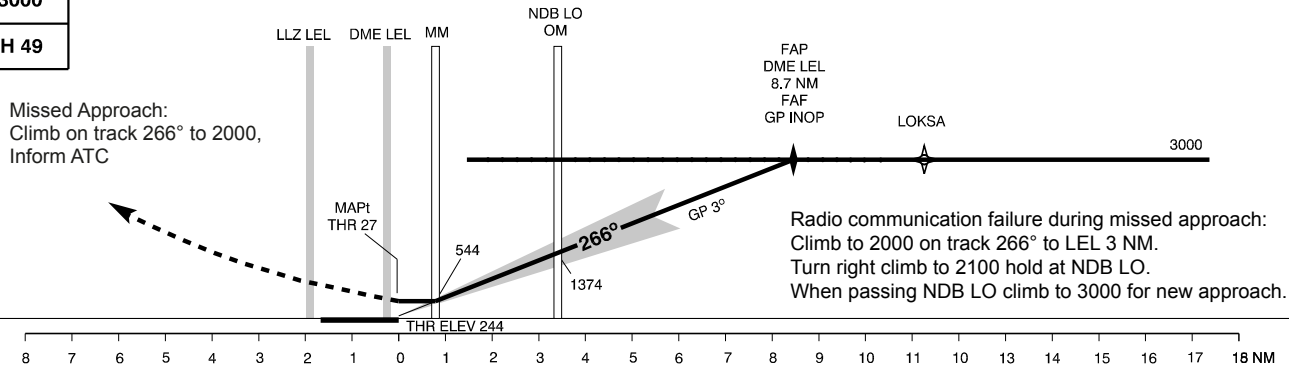


Changes: Missed Approach/Radio Communication Failure

TA 3000

RDH 49

Missed Approach:
Climb on track 266° to 2000,
Inform ATC



Radio communication failure during missed approach:
Climb to 2000 on track 266° to LEL 3 NM.
Turn right climb to 2100 hold at NDB LO.
When passing NDB LO climb to 3000 for new approach.

OCA (H)	C	D	SPECIAL CONDITIONS					
ILS CAT I	394 (150)	405 (161)	* Pass FAF (DME LEL 8.7) not below 3000. * Pass OM / NDB LO not below 1300. * Pass MM not below 700.					
ILS CAT II	315 (71)	329 (85)						
GP INOP *	550 (310)	550 (310)						
Circling **	1130 (890)	1130 (890)	** N of AD only.					
Time to THR 27 from NDB LO - DIST 3.41 NM								
110 KT	120 KT	130 KT	140 KT	150 KT	160 KT	170 KT	180 KT	190 KT
1 : 51	1 : 42	1 : 34	1 : 27	1 : 21	1 : 16	1 : 12	1 : 08	1 : 04

CAT III operations may take place without restrictions as the basic ILS surfaces are not penetrated