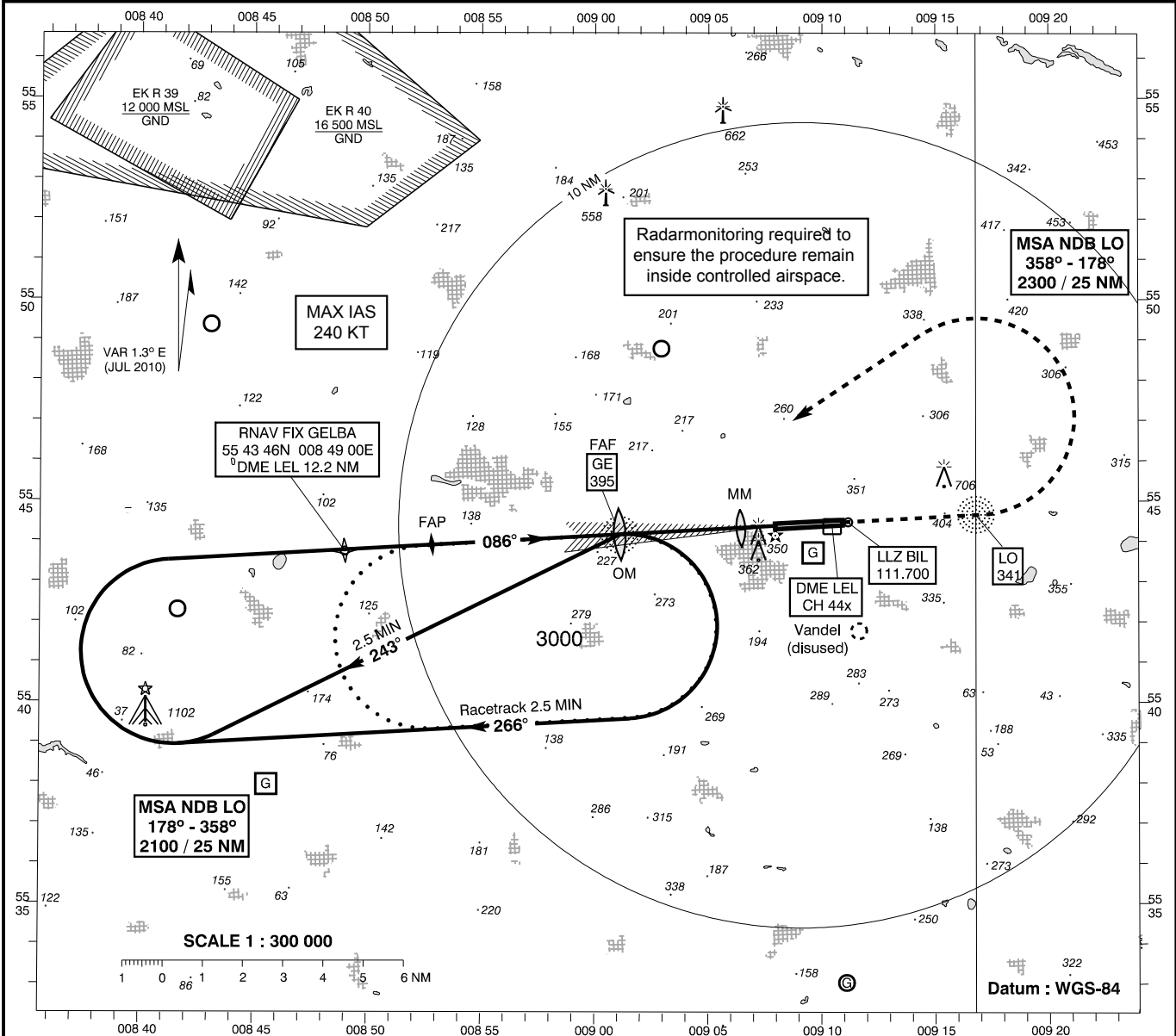


INSTRUMENT APPROACH CHART - ICAO

AD ELEV : 247
 Bearings are magnetic
 ELEV, ALT and HGT in FT

Billund APP : 127.575
 Billund TWR : 119.000
 ATIS : 118.775

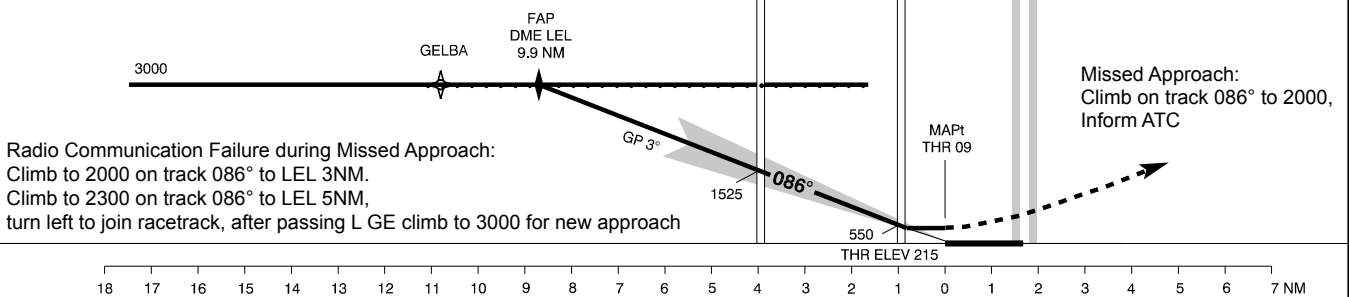
AD 2 - EKBI
 ILS 09 (CAT I + II + III)
 (ACFT CAT C / D)
 Billund



Changes: Missed Approach/Radio Communication Failure

TA 3000

RDH 50



OCA (H)	C	D	SPECIAL CONDITIONS																
ILS CAT I	365 (150)	376 (161)	* Pass DME LEL 9.9 NM not below 3000.																
ILS CAT II	286 (71)	300 (85)	* Pass FAF (OM / L GE) not below 1100.																
GP INOP *	500 (290)	500 (290)	* Pass MM not below 550.																
Circling **	1130 (890)	1130 (890)	** N of AD only.																
Time to THR 09 from L GE - DIST 3.95 NM																			
110 KT	120 KT	130 KT	140 KT	150 KT	160 KT	170 KT	180 KT	190 KT	DME LEL	2	3	4	5	6	7	8	9	10	
2 : 09	1 : 58	1 : 49	1 : 41	1 : 34	1 : 28	1 : 23	1 : 19	1 : 14	DIST to THR	0.7	1.7	2.7	3.7	4.7	5.7	6.7	7.7	8.7	
										Nominal ALT	480	800	1115	1435	1755	2070	2400	2710	3030

CAT III operations may take place without restrictions as the basic ILS surfaces are not penetrated