

**INSTRUMENT  
APPROACH  
CHART - ICAO**

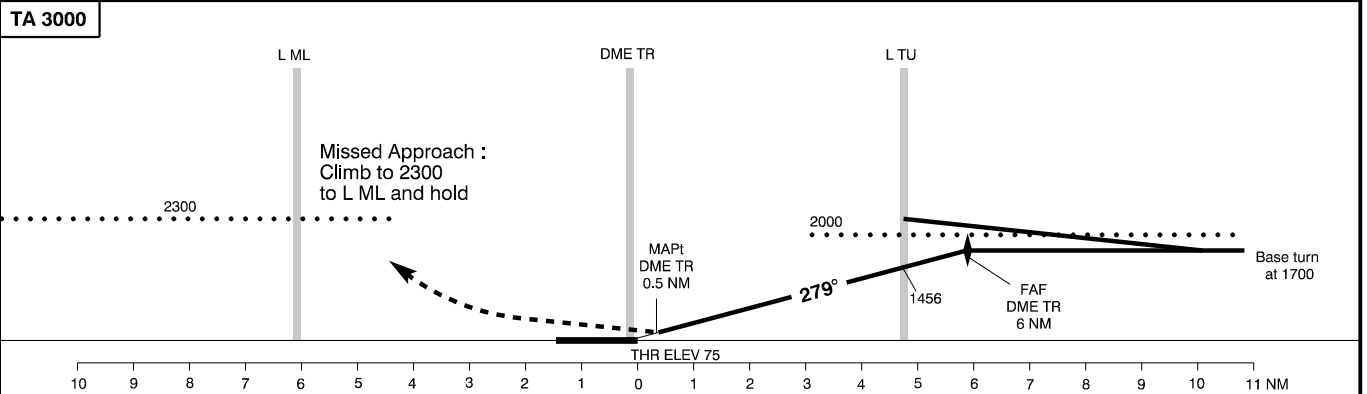
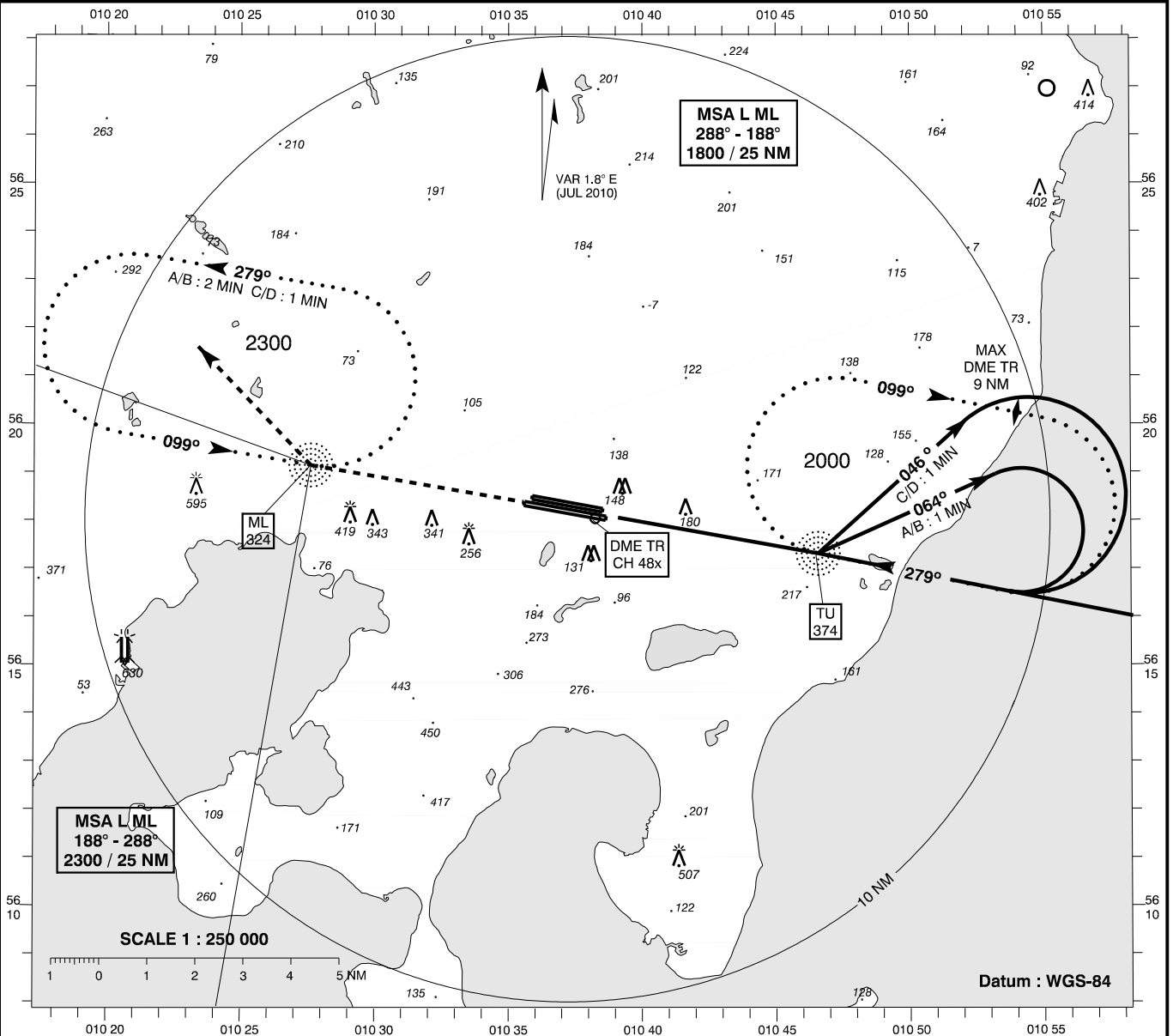
AD ELEV: 82

Bearings are magnetic  
ELEV, ALT and HGT in FT

Aarhus APP : 119.275

Aarhus TWR: 118.525

**AD 2 - EKAH  
NDB + DME 28L  
Aarhus**



Changes : VAR. OBST 507 FT added.

OCA (H)	A	B	C	D	SPECIAL CONDITIONS	
NDB+DME *	510 (440)	510 (440)	510 (440)	510 (440)	* Pass L TU not below 1300	
Circling	520 (440)	580 (500)	820 (740)	820 (740)		
DME TR	NM	1	2	3	4	5
Dist to THR	NM	0.8	1.8	2.8	3.8	4.8
ALT		360	660	950	1240	1530