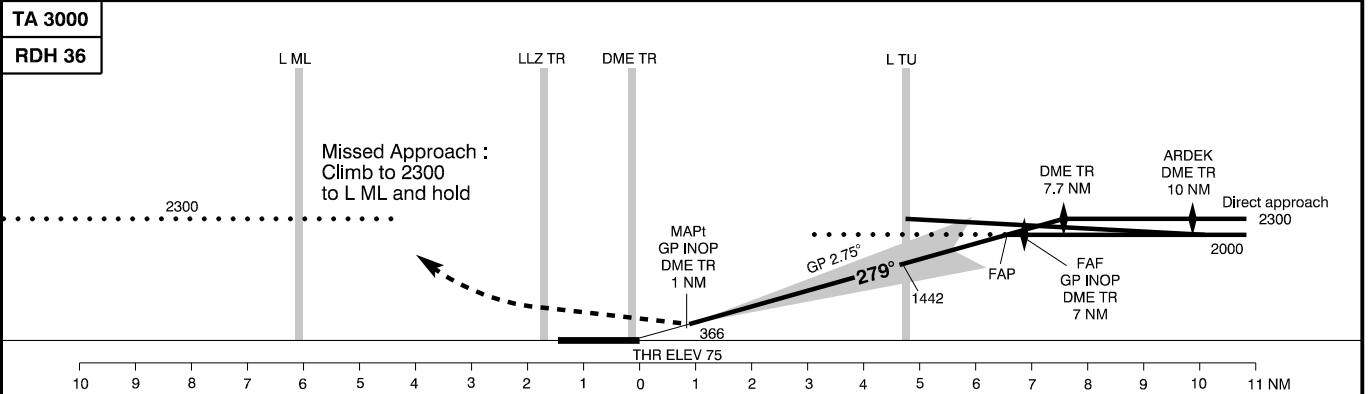
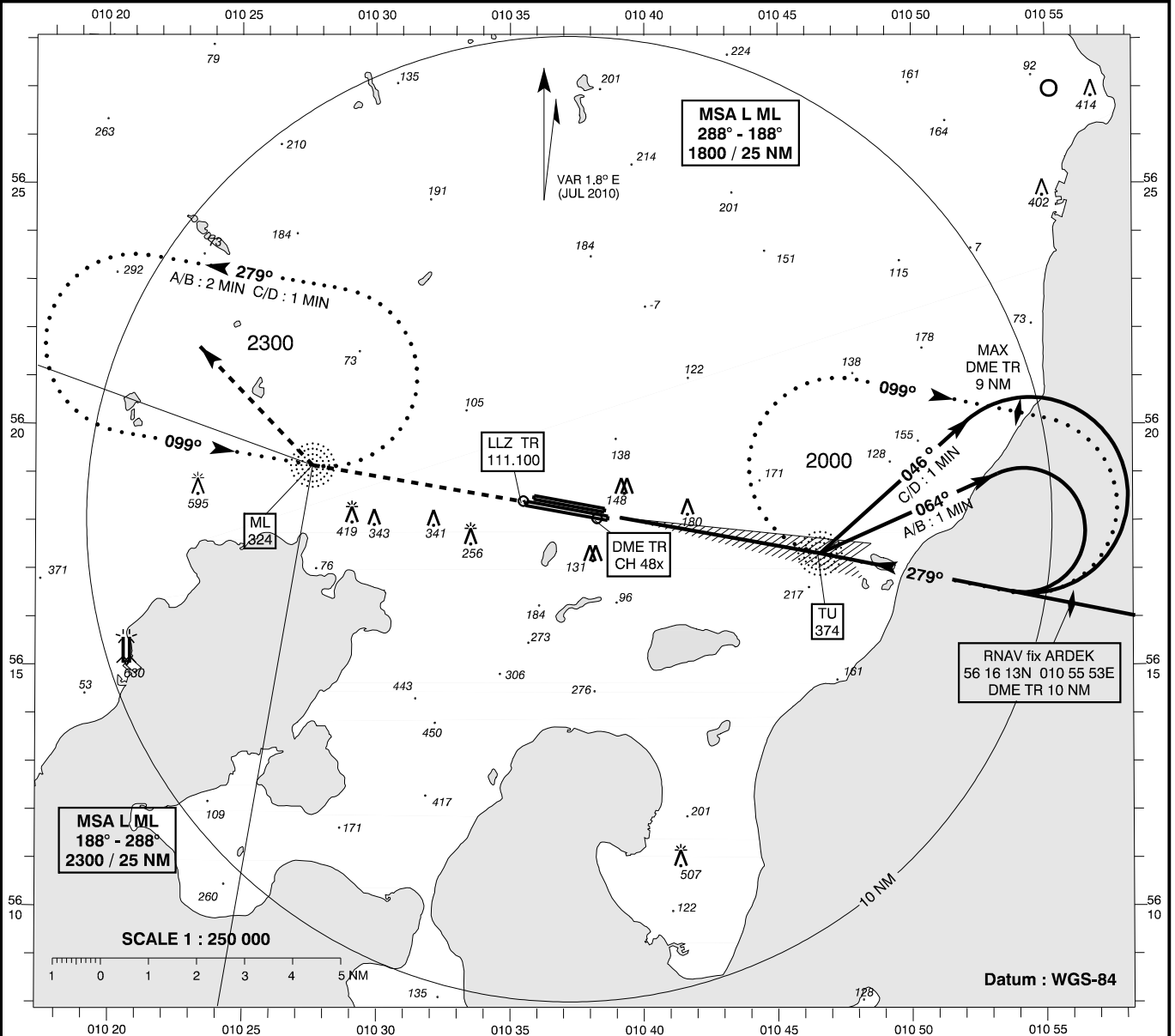


INSTRUMENT APPROACH CHART - ICAO

AD ELEV: 82
Bearings are magnetic
ELEV, ALT and HGT in FT

Aarhus APP : 119.275
Aarhus TWR: 118.525

AD 2 - EKAH
ILS / DME 28L (CAT I+II)
Aarhus



OCA (H)		A	B	C	D	SPECIAL CONDITIONS		
ILS / DME CAT I		240 (165)	252 (177)	260 (185)	271 (196)	* Pass L TU not below 600		
ILS / DME CAT II		131 (56)	139 (64)	151 (76)	163 (88)			
GP INOP *		430 (360)	430 (360)	430 (360)	430 (360)			
Circling		520 (440)	580 (500)	820 (740)	820 (740)			
DME TR	NM	1	2	3	4	5	6	6.6
DIST to THR	NM	0.9	1.9	2.9	3.9	4.9	5.9	6.5
ALT		360	660	950	1240	1530	1820	2000

Changes : CAT III withdrawn.