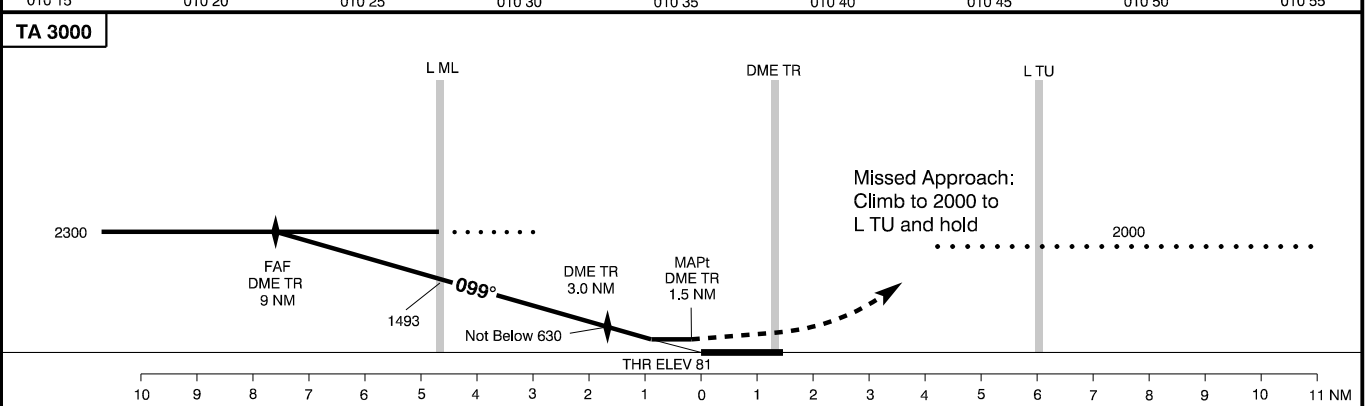
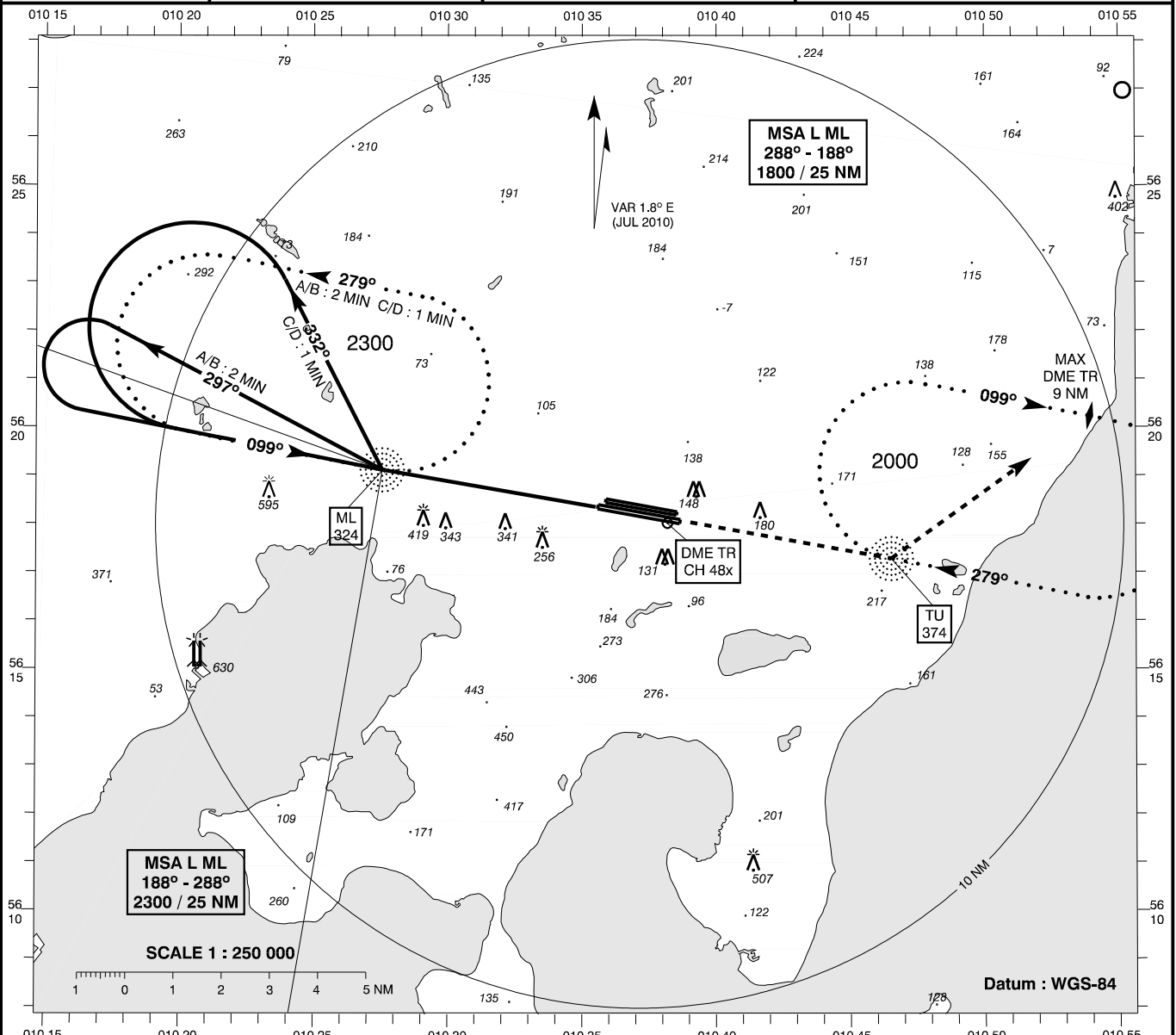


**INSTRUMENT  
APPROACH  
CHART - ICAO**

AD ELEV : 82  
Bearings are magnetic  
ELEV, ALT and HGT in FT

Aarhus APP : 119.275  
Aarhus TWR: 118.525

**AD 2 - EKAH  
NDB + DME 10R  
Aarhus**



Changes : VAR., OBST 507 FT added.

OCA (H)	A	B	C	D	SPECIAL CONDITIONS		
NDB + DME	495 (415)	495 (415)	495 (415)	495 (415)	Pass DME TR 3.0 NM not below 630		
Circling	520 (440)	580 (500)	820 (740)	820 (740)			
DME TR	NM 2	3	4	5	6	7	8
DIST to THR	NM 0.7	1.7	2.7	3.7	4.7	5.7	6.7
ALT	320	610	900	1200	1490	1780	2070