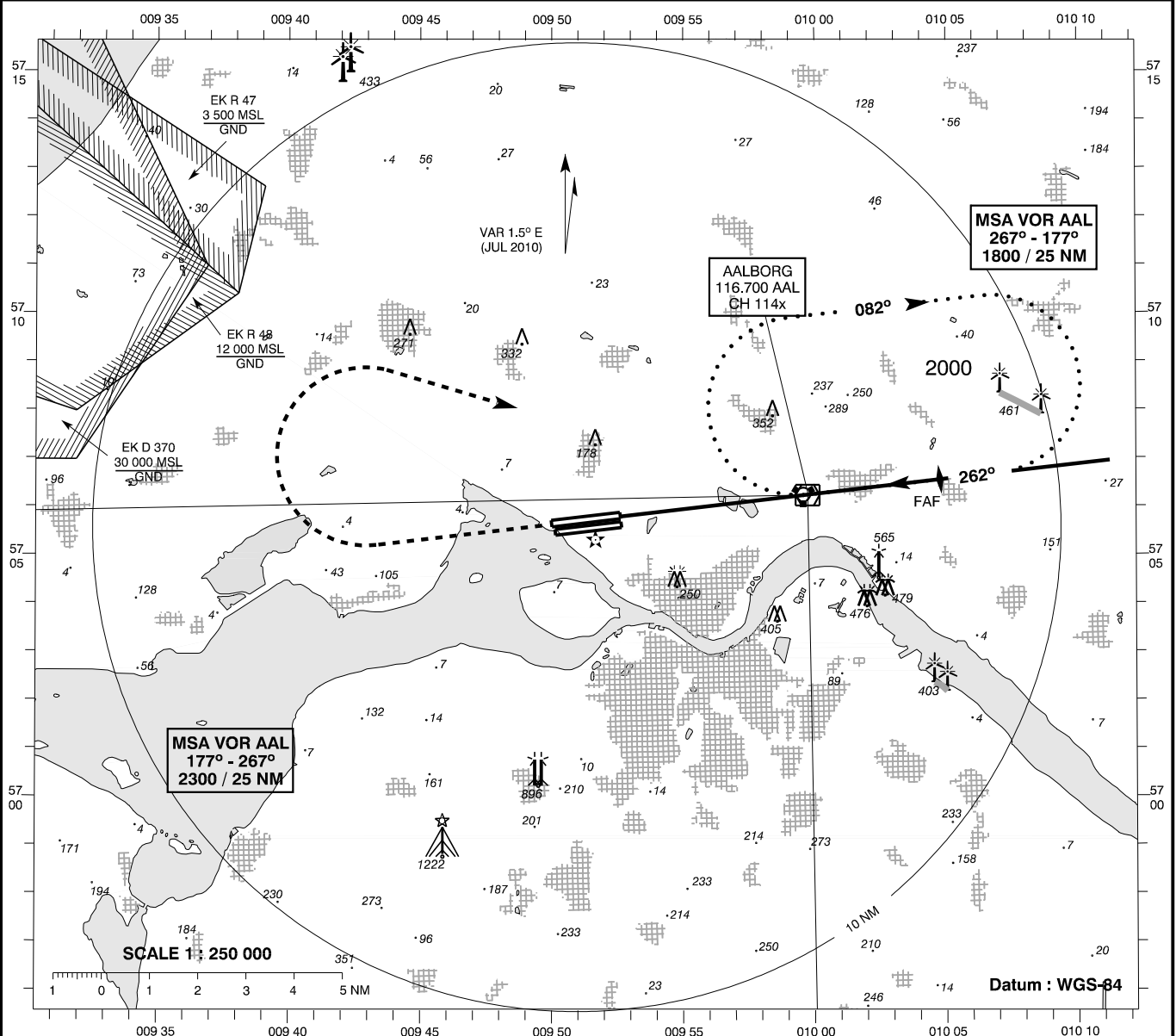


INSTRUMENT APPROACH CHART - ICAO

AD ELEV: 10
Bearings are magnetic
ELEV, ALT and HGT in FT

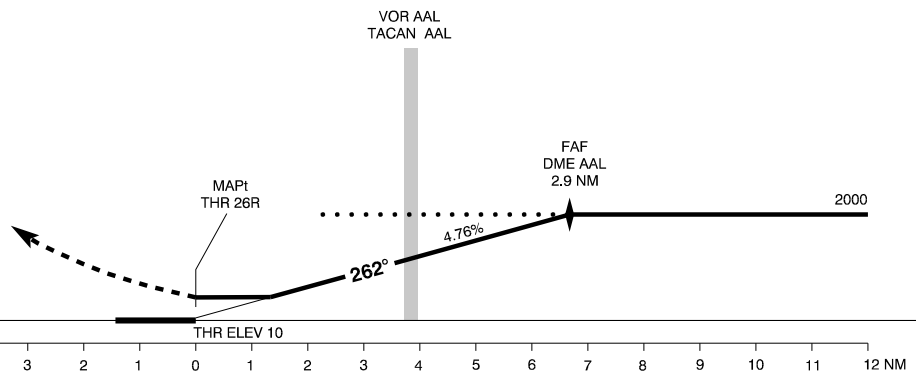
Aalborg APP : 123.975 309.950
Aalborg TWR: 118.300 284.775
ATIS : 120.475

**AD 2 - EKYT
VOR / DME 26R
Aalborg**



TA 3000

Missed Approach :
Climb on track 262°
to 2000, turn right to
hold at VOR AAL



Changes : Bearings corrected.

OCA (H)	A	B	C	D	SPECIAL CONDITIONS		
Circling	490 (480)	510 (500)*	730 (720)*	780 (770)*	* N of AD only		
DME AAL NM	2	1	0	1	2	2.9	
DIST to THR NM	1.8	2.8	3.8	4.8	5.8	6.7	
ALT	560	850	1140	1430	1720	2000	
Time to THR 26R from VOR AAL - DIST 3.96 NM							
90 KT	100 KT	110 KT	120 KT	130 KT	140 KT	150 KT	
2 : 38	2 : 23	2 : 10	1 : 59	1 : 50	1 : 42	1 : 35	
						OCL	
						VOR / DME	450 MSL