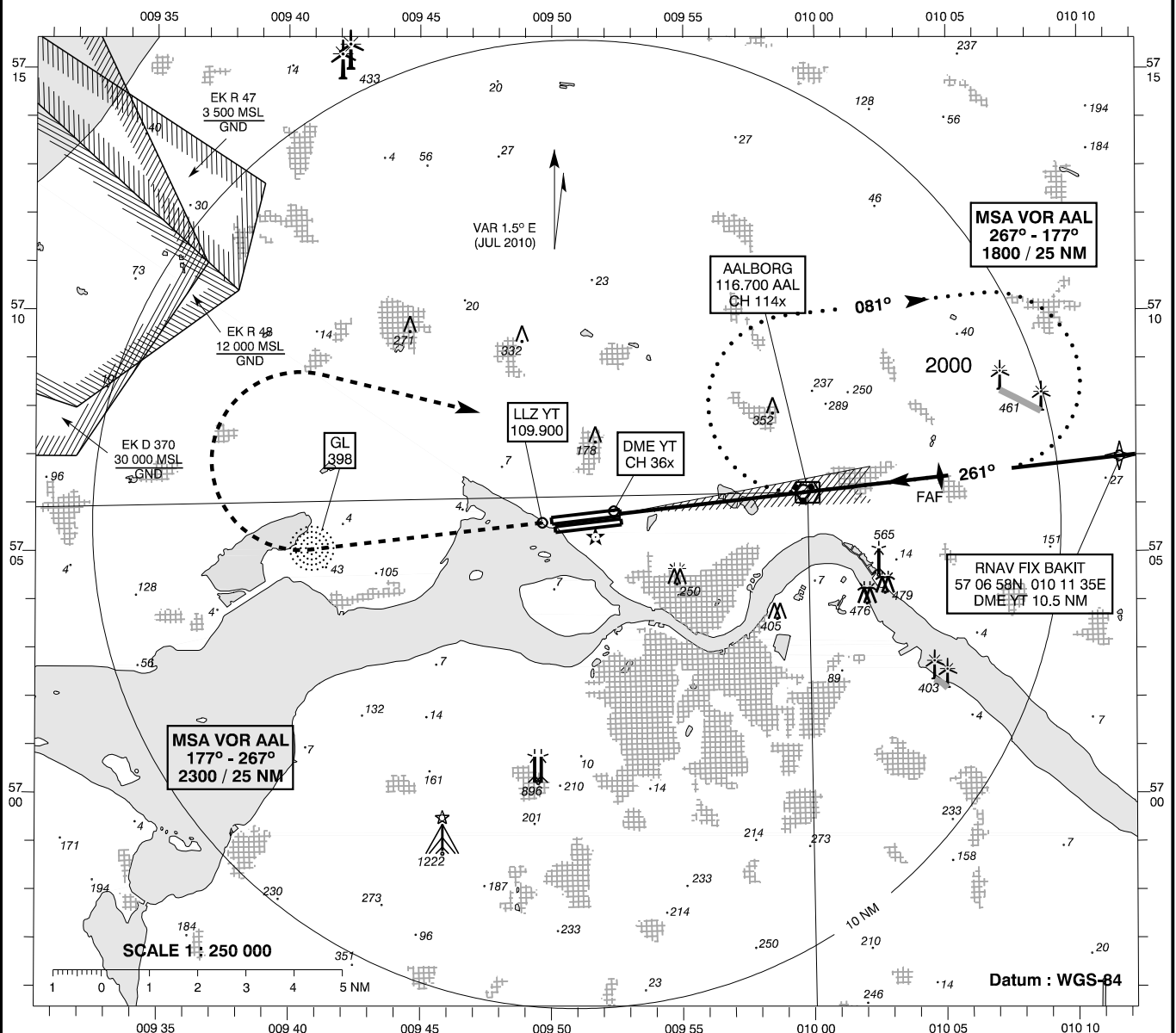


INSTRUMENT APPROACH CHART - ICAO

AD ELEV: 10
Bearings are magnetic
ELEV, ALT and HGT in FT

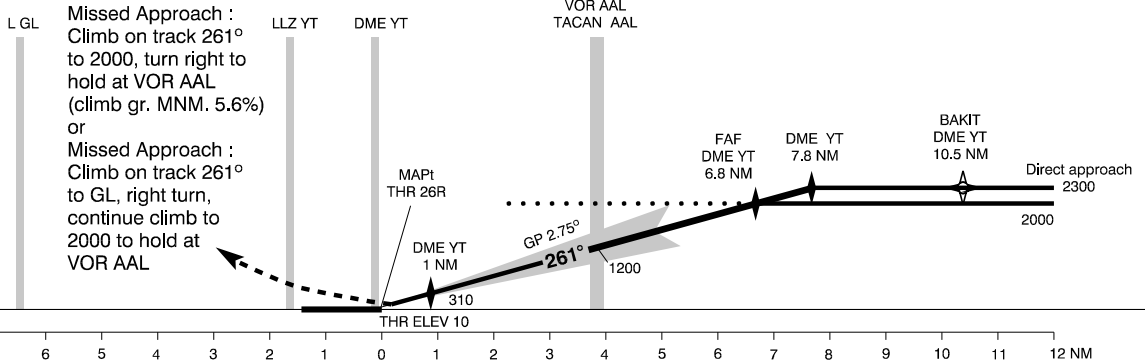
Aalborg APP : 123.975 309.950
Aalborg TWR: 118.300 284.775
ATIS : 120.475

AD 2 - EKYT
ILS / DME 26R (CAT I + II)
Aalborg



TA 3000

RDH 35



OCA (H)	A	B	C	D	SPECIAL CONDITIONS			
ILS CAT I	157 (147)	166 (156)	178 (168)	191 (181)				
ILS CAT II	65 (55)	75 (65)	87 (77)	101 (91)				
Circling	490 (480)	510 (500)*	730 (720)*	780 (770)*	*North of AD only			
DME YT	NM	1	2	3	4	5	6	6,8
DIST to THR	NM	0,9	1,9	2,9	3,9	4,9	5,9	6,7
ALT		310	600	890	1180	1470	1760	2000

GP INOP : OCL 292 MSL.
Pass VOR / TACAN not below 1200

Changes : VAR, Windturbines 433 FT added.