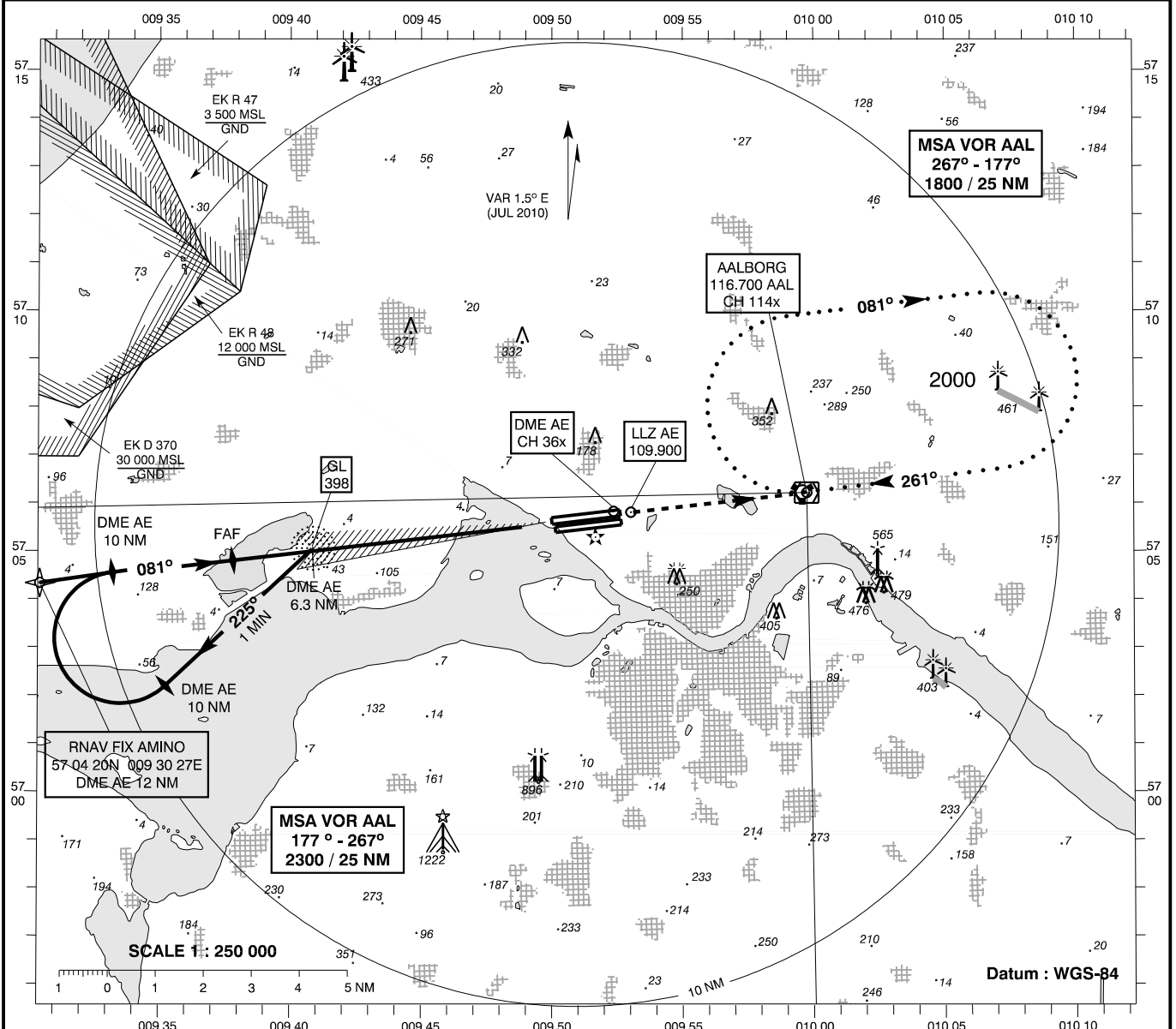


**INSTRUMENT APPROACH CHART - ICAO**

AD ELEV: 10  
Bearings are magnetic  
ELEV, ALT and HGT in FT

Aalborg APP : 123.975 309.950  
Aalborg TWR : 118.300 284.775  
ATIS : 120.475

**AD 2 - EKYT  
ILS / DME 08L  
Aalborg**

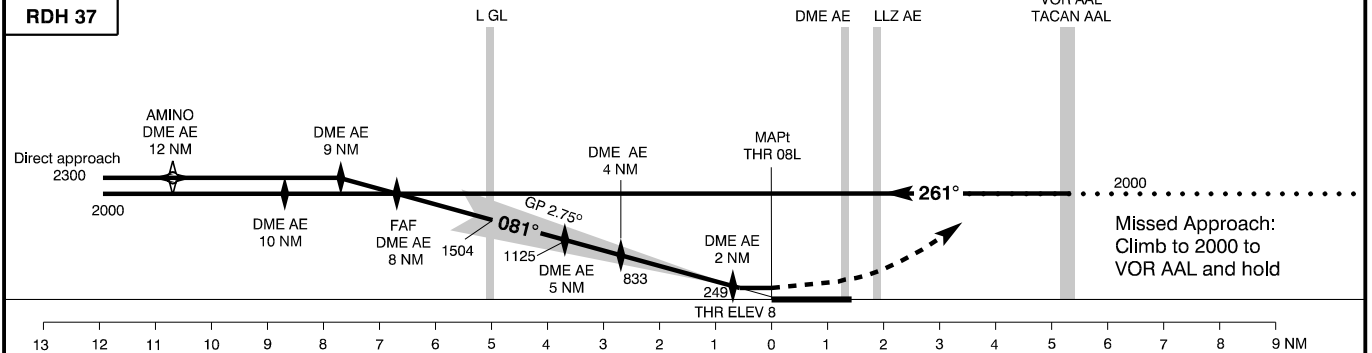


TA 3000

RDH 37

Base turn procedure valid for speeds up to TAS 175 KT

Changes : VAR, Windturbines 433 FT added.



OCA (H)	A	B	C	D	SPECIAL CONDITIONS				
ILS/DME	185 (177)	194 (186)	205 (197)	217 (209)	* Pass DME AE 4 NM not below 500 ** N of AD only				
GP INOP *	340 (330)	340 (330)	340 (330)	340 (330)					
Circling	490 (480)	510 (500)**	730 (720)**	780 (770)**					
DME AE	NM	2	3	4	5	6	7	8	
DIST to THR	NM	0.7	1.7	2.7	3.7	4.7	5.7	6.7	
ALT		250	550	840	1130	1420	1710	2000	