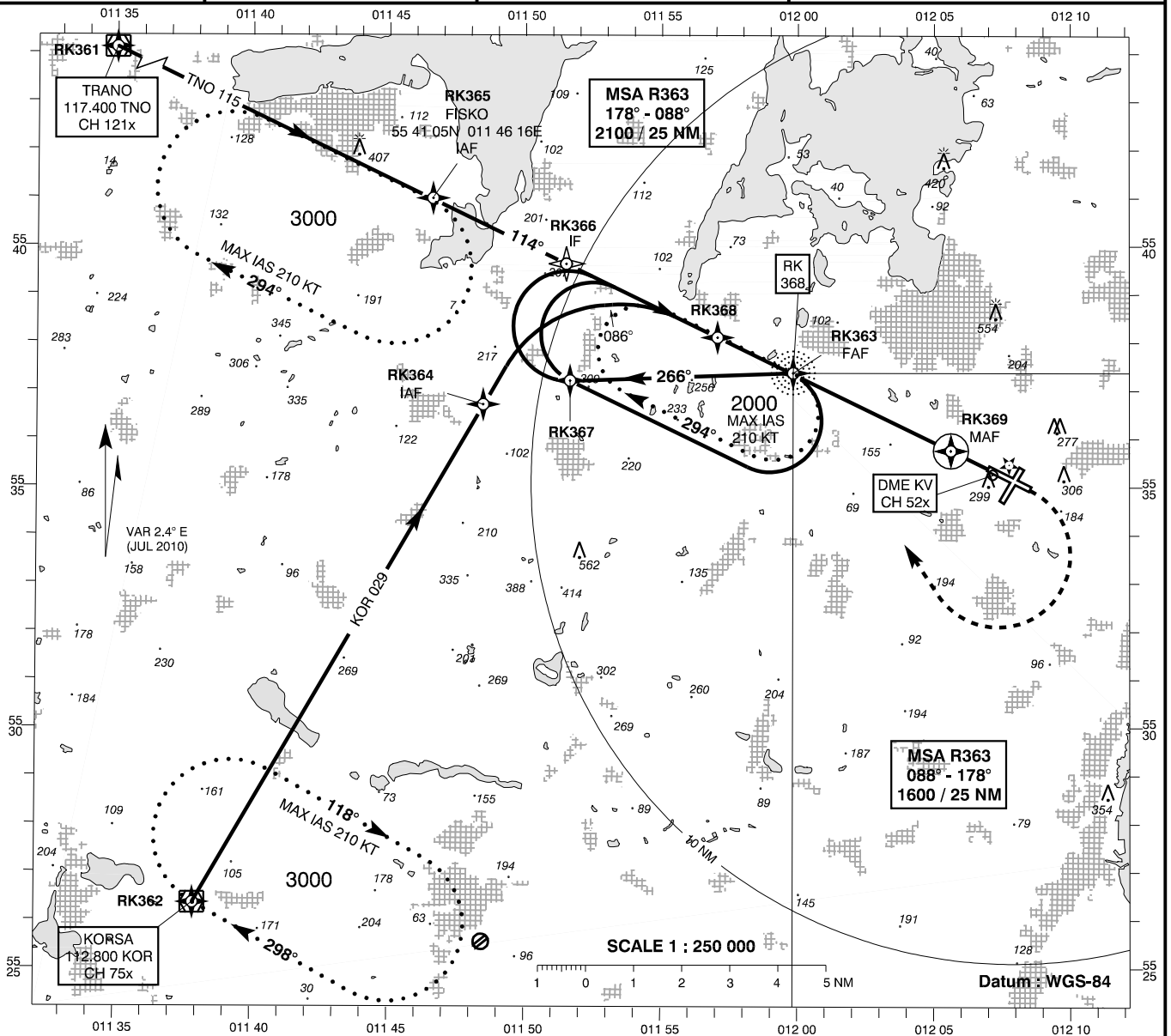


**INSTRUMENT
APPROACH
CHART - ICAO**

AD ELEV : 146
Bearings are magnetic
ELEV, ALT and HGT in FT

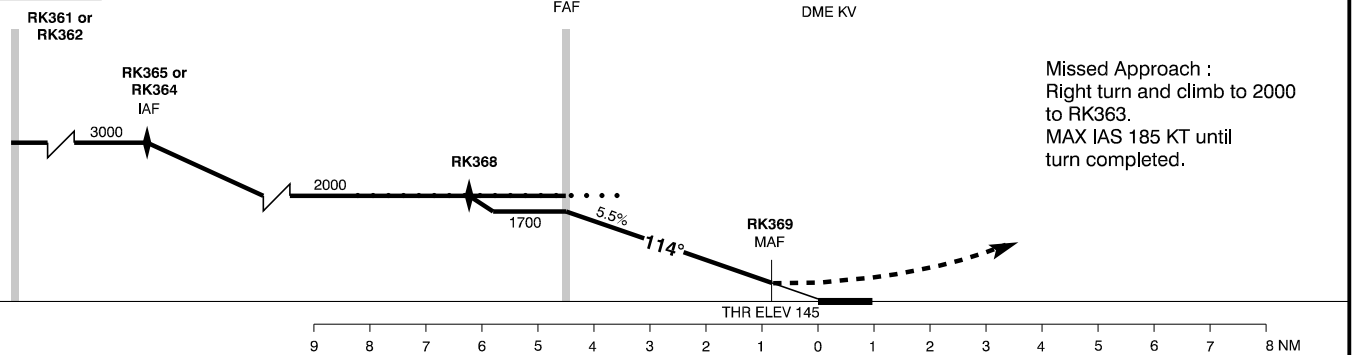
Roskilde APP : 125.525
Roskilde TWR : 118.900 119.650
ATIS : 123.800

AD 2 - EKRK
RNAV 11 - 1
(ACFT CAT C + D)
København / Roskilde



TA 5000

Base turn and racetrack procedures MAX IAS 210 KT



Missed Approach :
Right turn and climb to 2000
to RK363.
MAX IAS 185 KT until
turn completed.

OCA (H)	C	D	SPECIAL CONDITIONS
RNAV	740 (600)	740 (600)	
Circling	950 (810)	950 (810)	

Changes : Procedure renamed.

From TNO VOR/DME

Waypoint	Latitude	Longitude
RK361 (VOR/DME TNO)	55 46 26.74N	011 26 21.08E
RK365 (FISKO)	55 41 01.94N	011 46 37.35E
RK368 (DME KV 6.4)	55 38 08.42N	011 57 05.34E
RK363 (FAF L RK)	55 37 22.86N	011 59 49.45E
RK369 (DME KV 1)	55 35 45.89N	012 05 37.66E
RK363 (MAHP L RK)	55 37 22.86N	011 59 49.45E

From KOR VOR/DME

Waypoint	Latitude	Longitude
RK362 (VOR/DME KOR)	55 26 21.71N	011 37 53.51E
RK364 (IAF DME KOR 12)	55 36 43.12N	011 48 27.83E
RK366 (IF)	55 39 38.82N	011 51 28.36E
RK368 (DME KV 6.4)	55 38 08.42N	011 57 05.34E
RK363 (FAF L RK)	55 37 22.86N	011 59 49.45E
RK369 (DME KV 1)	55 35 45.89N	012 05 37.66E
RK363 (MAHP L RK)	55 37 22.86N	011 59 49.45E

From L RK

Waypoint	Latitude	Longitude
RK367 (DME KV 9)	55 37 13.00N	011 51 43.77E
RK368 (DME KV 6.4)	55 38 08.42N	011 57 05.34E
RK363 (FAF L RK)	55 37 22.86N	011 59 49.45E
RK369 (DME KV 1)	55 35 45.89N	012 05 37.66E
RK363 (MAHP L RK)	55 37 22.86N	011 59 49.45E